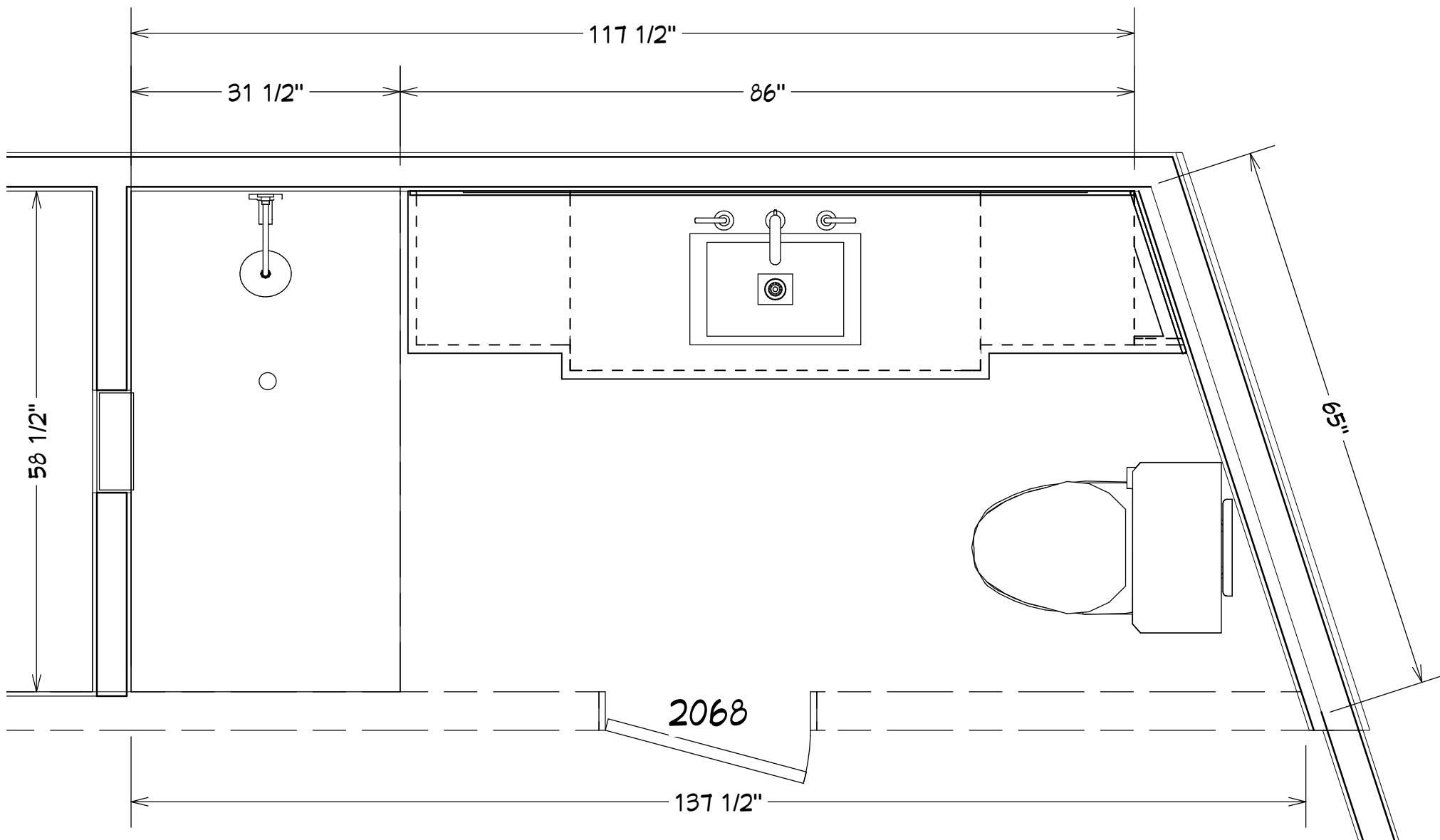
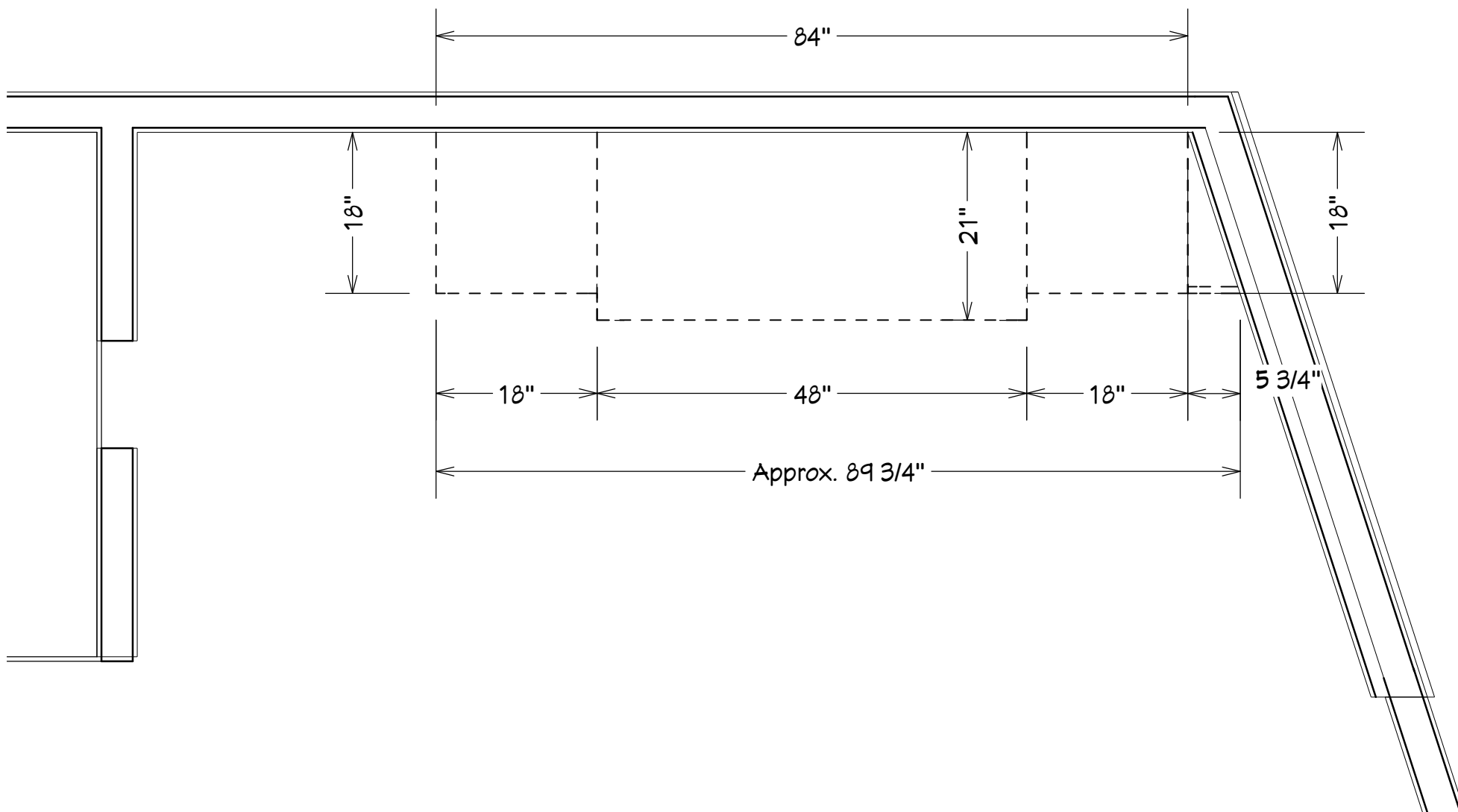


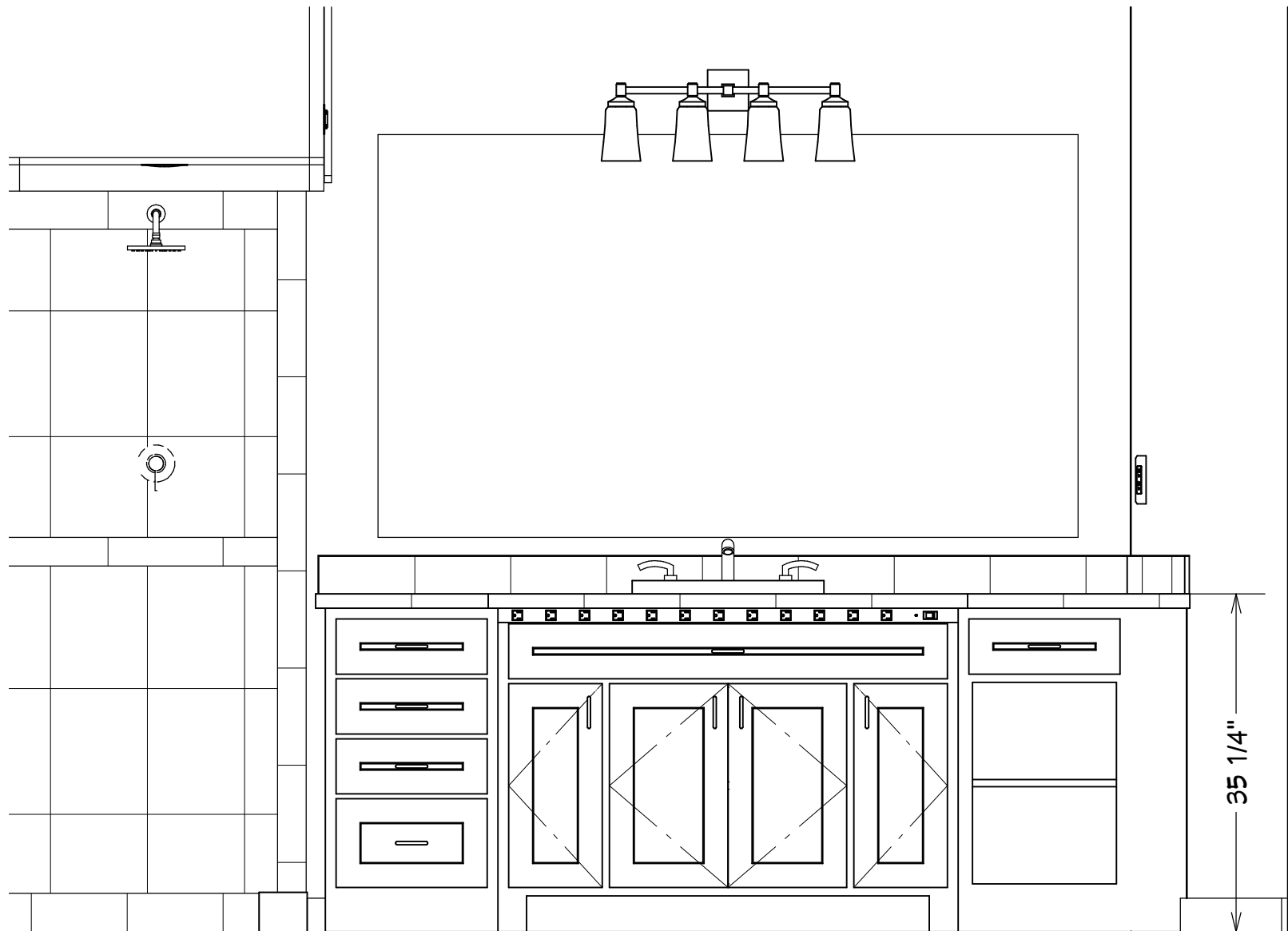
Heatwole Residence Bathroom Cabinetry



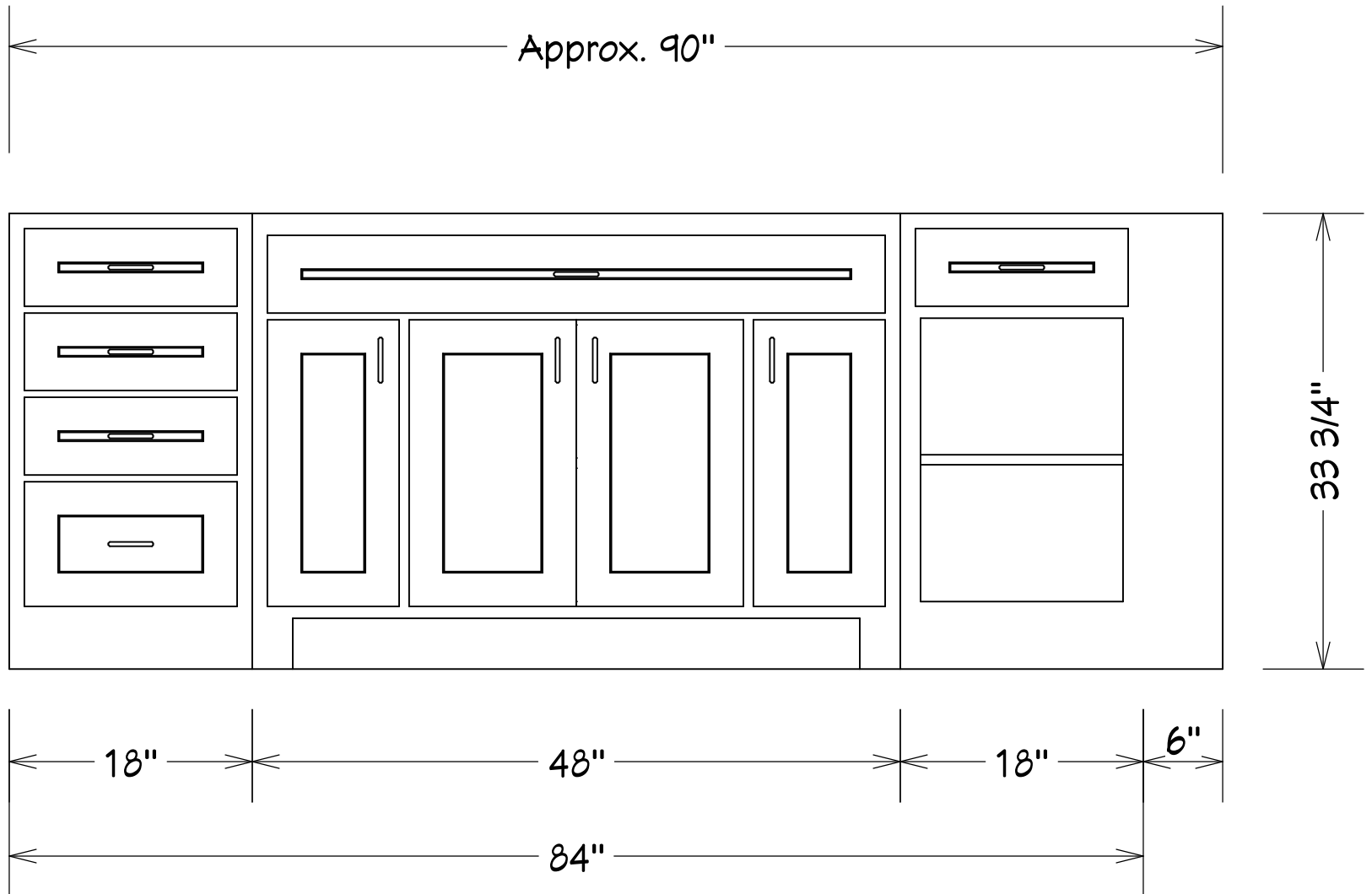
Main Overview



Cabinet Overview



Main Elevation



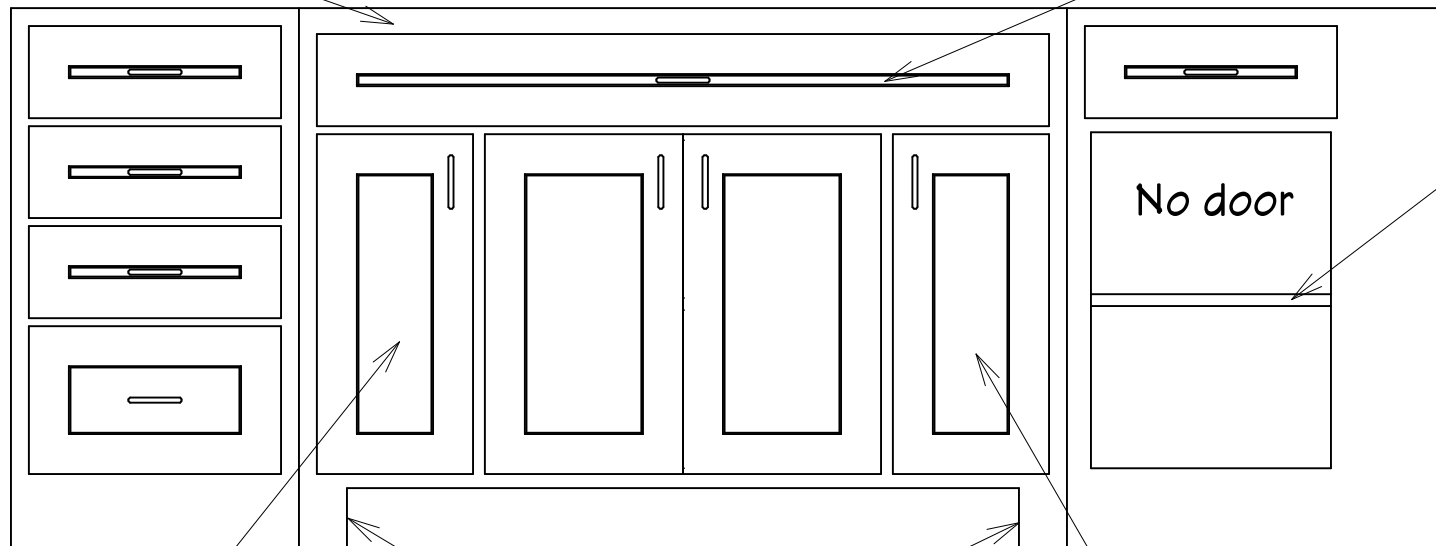
Cabinet Elevation

General notes:

1. Natural Red Oak finish (please supply sample to verify)
2. Shaker door and drawer fronts
3. Standard finished plywood end panels
4. No toe kick on 2 side cabinets

Min. 1-1/2" space for outlet strip

Tip out tray



Adjustable shelf

No door

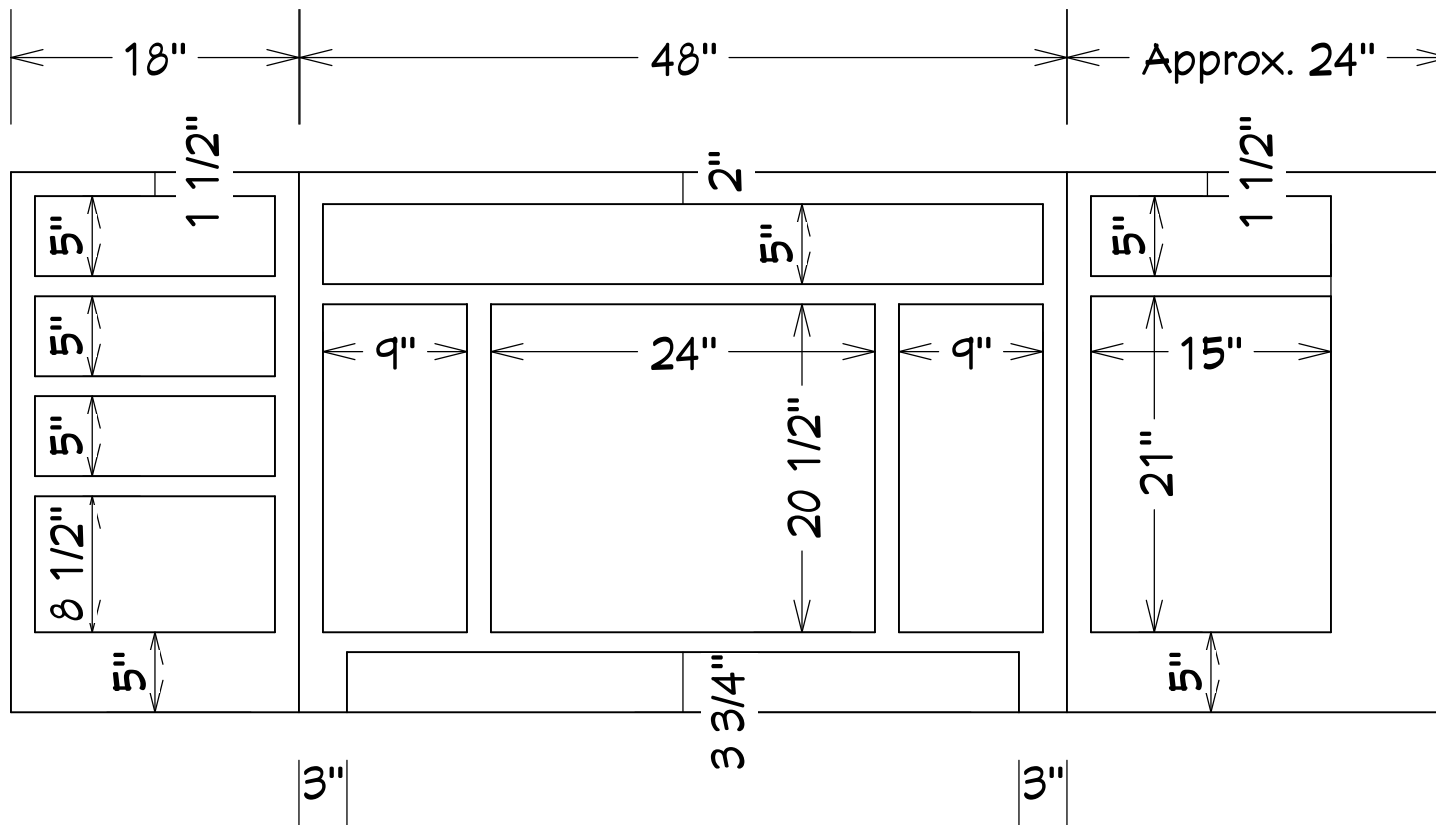
Decorative feet

Pull out shelving unit / organizer
(Rev-A-Shelf part #448-VC20-8)

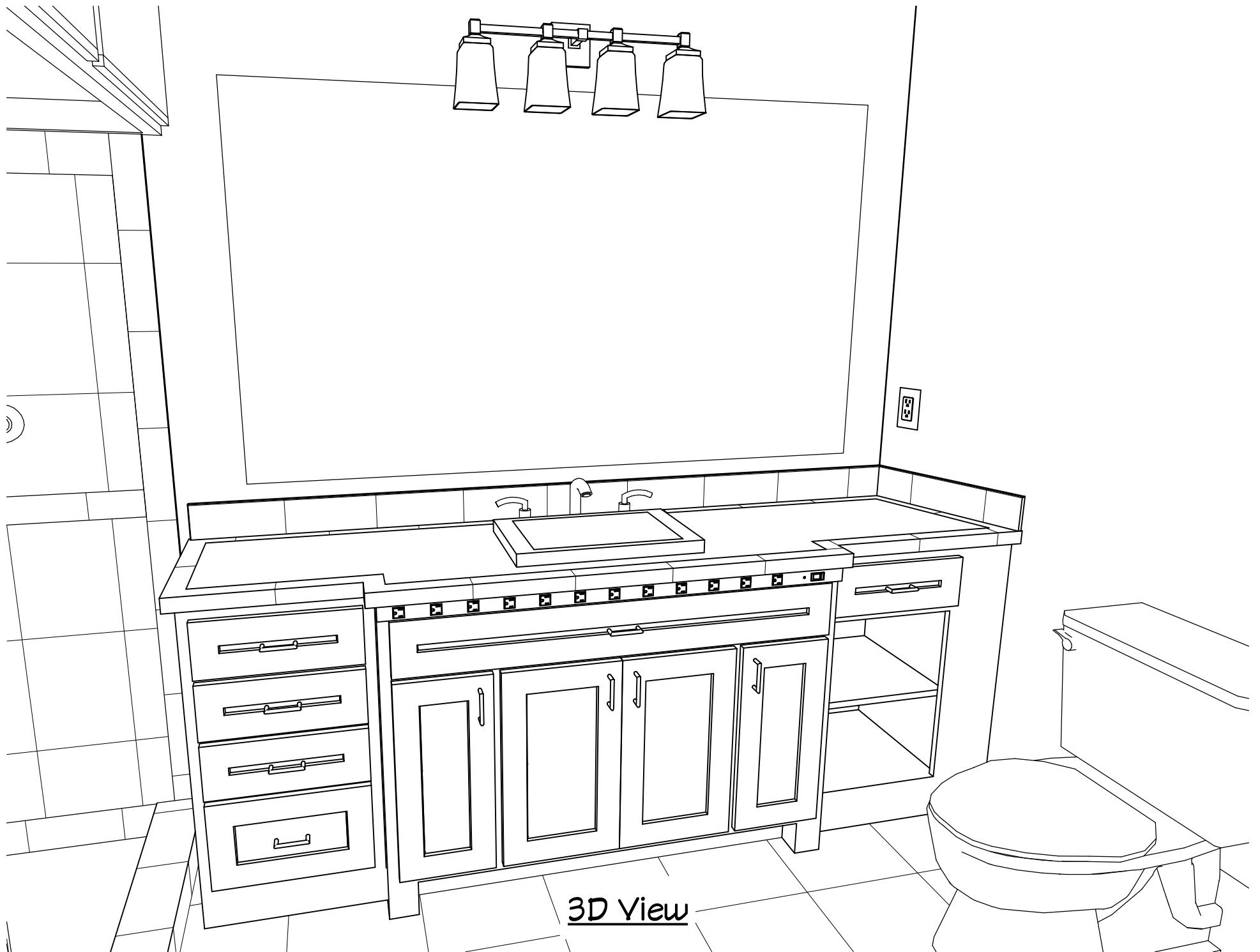
Trash pullout
(Rev-A-Shelf part #RY-8PB-CR S)

Cabinet Notes

Please note: All stiles to be 1-1/2" and all rails to be 1-1/4" unless otherwise noted



Cabinet Face Frame Detail



3D View