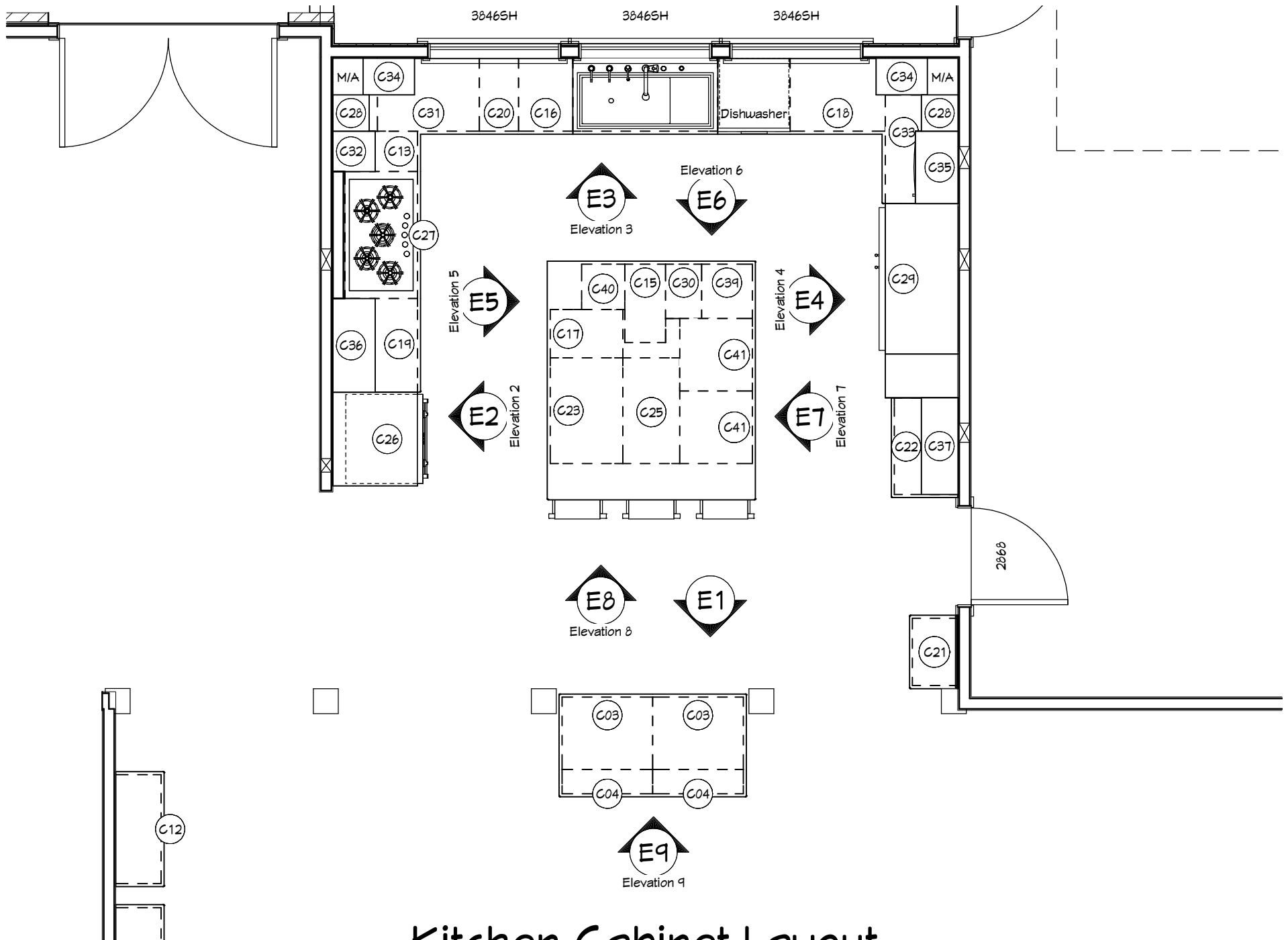


Emerson Residence Cabinet Plans

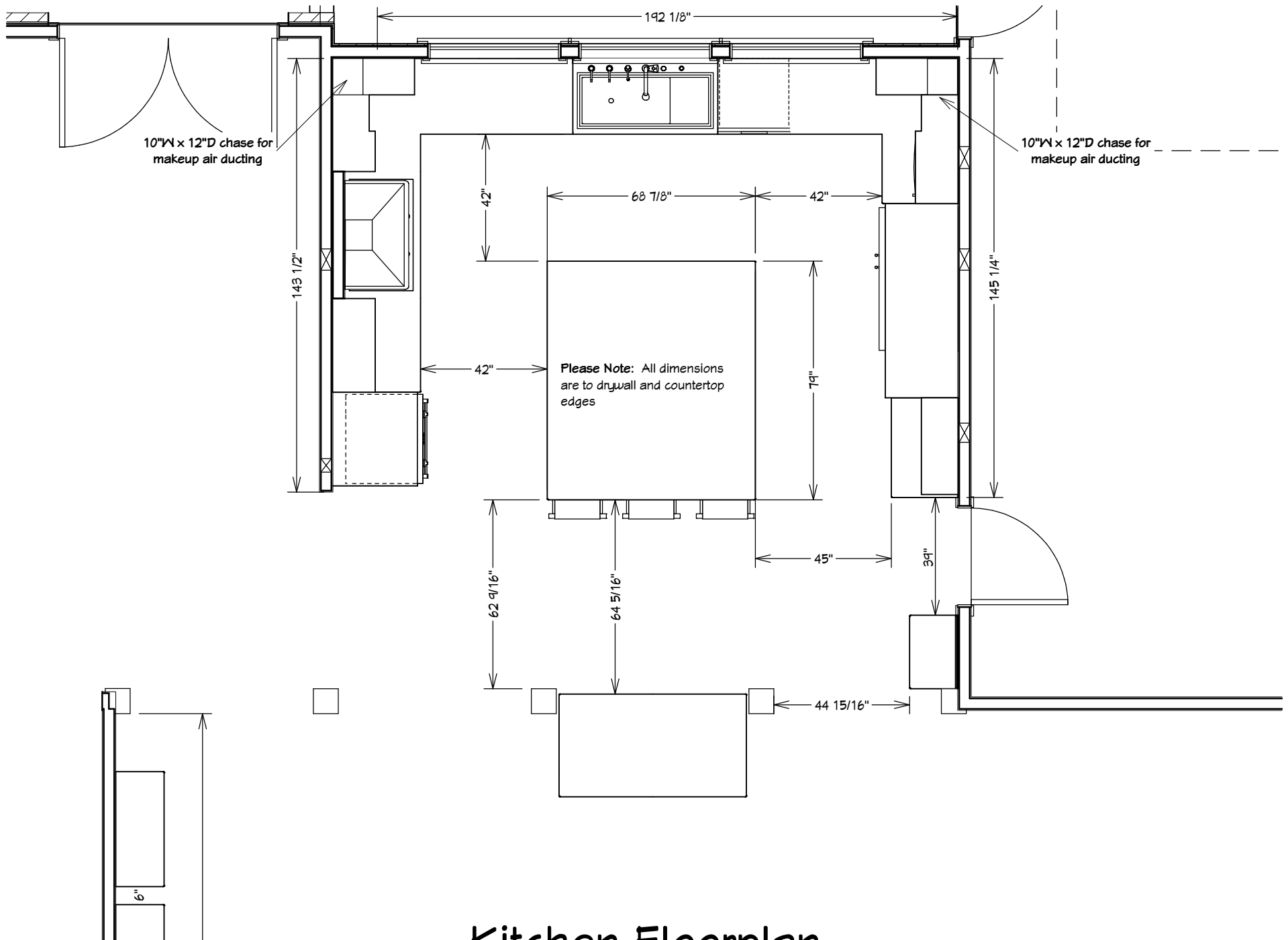
LABEL	TITLE	DESCRIPTION
P-1	PAGE TABLE	
P-2	CABINET SCHEDULE	LIST OF CABINETS WITH GENERAL DIMENSIONS AND COMMENTS
P-3	KITCHEN CABINET LAYOUT	KITCHEN AREA CABINETS WITH LABELS
P-4	KITCHEN FLOORPLAN	KITCHEN AREA FLOORPLAN WITH GENERAL DIMENSIONS AND CLEARANCES
P-5	LIVING/DINING ROOM CABINET LAYOUT	CREDENZA AND WOODSTOVE AREA CABINETS WITH LABELS
P-6	LIVING/DINING ROOM FLOORPLAN	CREDENZA AND WOODSTOVE AREA FLOORPLAN WITH GENERAL DIMENSIONS AND CLEARANCES
P-7	MASTER BATHROOM CABINET LAYOUT	MASTER BATHROOM CABINET
P-8	MASTER BATHROOM FLOORPLAN	MASTER BATHROOM FLOORPLAN WITH GENERAL DIMENSIONS AND CLEARANCES
P-9	ELEVATION 1	PANTRY/DISPLAY CABINET WITH DIMENSIONS (KITCHEN SIDE)
P-10	ELEVATION 1	PANTRY/DISPLAY CABINET WITH NOTES (KITCHEN SIDE)
P-11	ELEVATION 2	OVEN/RANGE WALL CABINETS WITH DIMENSIONS
P-12	ELEVATION 2	OVEN/RANGE WALL CABINETS WITH NOTES
P-13	ELEVATION 3	WINDOW WALL CABINETS WITH GENERAL DIMENSIONS
P-14	ELEVATION 3	WINDOW WALL CABINETS WITH NOTES
P-15	ELEVATION 4	REFRIGERATOR WALL CABINETS WITH GENERAL DIMENSIONS
P-16	ELEVATION 4	REFRIGERATOR WALL CABINETS WITH NOTES
P-17	ELEVATION 5	ISLAND/PANTRY CABINET WITH GENERAL DIMENSIONS (SIDE FACING OVEN)
P-18	ELEVATION 5	ISLAND/PANTRY CABINET WITH NOTES (SIDE FACING OVEN)
P-19	ELEVATION 6	ISLAND CABINETS WITH GENERAL DIMENSIONS (SIDE FACING SINK)
P-20	ELEVATION 6	ISLAND CABINETS WITH NOTES (SIDE FACING SINK)
P-21	ELEVATION 7	ISLAND CABINETS WITH GENERAL DIMENSIONS (SIDE FACING REFRIGERATOR)
P-22	ELEVATION 7	ISLAND CABINETS WITH NOTES (SIDE FACING REFRIGERATOR)
P-23	ELEVATION 8	ISLAND CABINETS WITH GENERAL DIMENSIONS (SIDE FACING PANTRY CABINET)
P-24	ELEVATION 8	ISLAND CABINETS WITH NOTES (SIDE FACING PANTRY CABINET)
P-25	ELEVATION 9	PANTRY/DISPLAY CABINET WITH GENERAL DIMENSIONS (LIVING ROOM SIDE)
P-26	ELEVATION 9	PANTRY/DISPLAY CABINET WITH NOTES (LIVING ROOM SIDE)
P-27	ELEVATION 11	CREDENZA CABINETS WITH GENERAL DIMENSIONS
P-28	ELEVATION 11	CREDENZA CABINETS WITH NOTES
P-29	ELEVATION 12	FIREPLACE AREA CABINETS WITH GENERAL DIMENSIONS
P-30	ELEVATION 12	FIREPLACE AREA CABINETS WITH GENERAL DIMENSIONS
P-31	ELEVATION 13	MASTER BATH VANITY CABINETS WITH GENERAL DIMENSIONS
P-32	ELEVATION 13	MASTER BATH VANITY CABINETS WITH NOTES
P-33	3D KITCHEN VIEW #1	
P-34	3D KITCHEN VIEW #2	
P-35	3D KITCHEN VIEW #3	
P-36	3D KITCHEN VIEW #4	
P-37	3D FIREPLACE VIEW	
P-38	3D CREDENZA/DISPLAY CABINET VIEW	
P-39	DETAIL 1	OVEN CABINET
P-40	DETAIL 2	STANDRAD DRAWER BASE DETAIL
P-41	DETAILS 3 AND 4	DRINKING GLASS STORAGE
P-42	DETAILS 5 AND 6	BLIND CORNER AND SINK BASE
P-43	DETAILS 7, 8, AND 9	BOOKSHLEF, BLIND CORNER, AND REFRIGERATOR
P-44	DETAIL 10	APPLIANCE STORAGE CABINET
P-45	DETAILS 11 AND 12	WOODSTOVE AREA BOOKSHLEVES

CABINET SCHEDULE

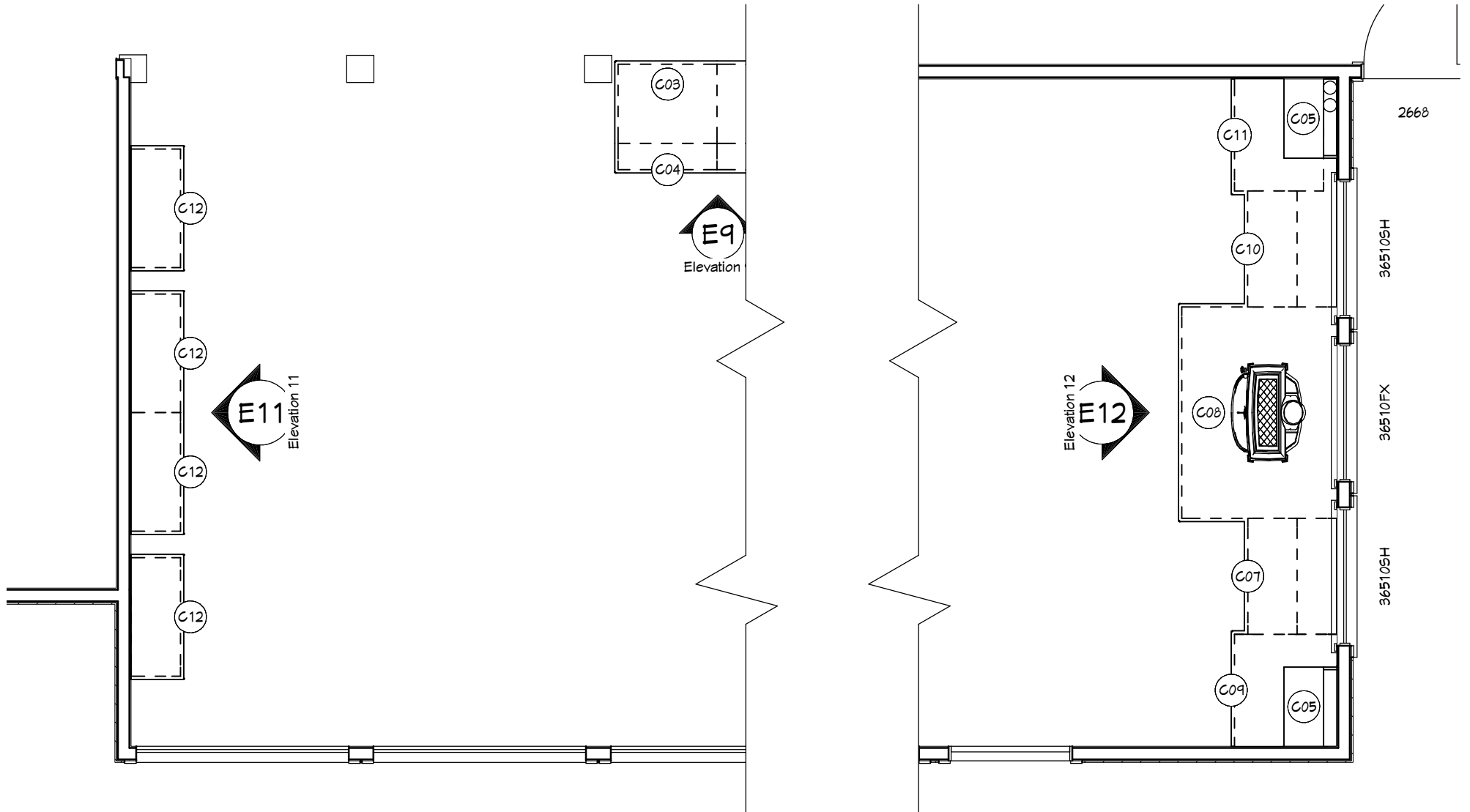
NUMBER	QTY	WIDTH	DEPTH	HEIGHT	DESCRIPTION	ROOM NAME	COMMENTS
C01	1	19 1/4 "	21 "	36 "	BASE CABINET	MASTER BATH	
C02	2	27 "	21 "	36 "	BASE CABINET	MASTER BATH	
C03	2	30 "	24 "	42 "	BASE CABINET	LIVING/DINING	
C04	2	30 "	8 "	42 "	BASE CABINET	LIVING/DINING	
C05	2	24 "	12 "	90 "	UTILITY CABINET	LIVING/DINING	
C06	4	8 1/4 "	8 1/4 "	93 1/8 "	UTILITY CABINET	LIVING/DINING	
C07	1	35 3/16 "	15 "	18 "	BASE CABINET	LIVING/DINING	
C08	1	64 1/8 "	47 "	18 "	BASE CABINET	LIVING/DINING	
C09	1	34 "	31 "	18 "	BASE CABINET	LIVING/DINING	
C10	1	35 1/4 "	15 "	18 "	BASE CABINET	LIVING/DINING	
C11	1	34 "	27 "	18 "	BASE CABINET	LIVING/DINING	
C12	4	36 "	15 "	36 "	BASE CABINET	LIVING/DINING	
C13	1	13 3/8 "	28 "	36 "	BASE CABINET	KITCHEN	
C14	1	8 1/4 "	8 3/8 "	93 1/8 "	UTILITY CABINET	KITCHEN	
C15	1	13 1/2 "	26 "	36 "	BASE CABINET	KITCHEN	
C16	1	18 "	24 "	36 "	BASE CABINET	KITCHEN	
C17	1	16 "	24 "	36 "	BASE CABINET	KITCHEN	
C18	1	31 7/16 "	24 "	36 "	BASE CABINET	KITCHEN	
C19	1	31 "	28 "	36 "	BASE CABINET	KITCHEN	
C20	1	12 15/16 "	24 "	36 "	BASE CABINET	KITCHEN	
C21	1	22 1/4 "	15 "	42 "	BASE CABINET	KITCHEN	
C22	1	32 "	21 "	42 "	BASE CABINET	KITCHEN	
C23	1	35 "	24 "	36 "	BASE CABINET	KITCHEN	
C24	1	14 1/2 "	24 "	102 "	UTILITY CABINET	KITCHEN	
C25	1	18 7/8 "	35 "	36 "	BASE CABINET	KITCHEN	
C26	1	31 "	28 "	102 "	UTILITY CABINET	KITCHEN	
C27	1	42 "	24 "	36 "	BASE CABINET	KITCHEN	
C28	2	12 "	12 "	60 "	WALL CABINET	KITCHEN	
C29	1	49 3/4 "	24 "	102 "	UTILITY CABINET	KITCHEN	
C30	1	12 "	18 "	36 "	BASE CABINET	KITCHEN	
C31	1	33 3/4 "	24 "	36 "	BASE CABINET	KITCHEN	
C32	1	13 3/8 "	14 "	42 "	WALL CABINET	KITCHEN	
C33	1	36 "	24 "	36 "	BASE CABINET	KITCHEN	
C34	2	17 "	12 "	60 "	WALL CABINET	KITCHEN	
C35	1	24 "	14 "	30 "	WALL CABINET	KITCHEN	
C36	1	31 "	14 "	42 "	WALL CABINET	KITCHEN	
C37	1	32 "	12 "	54 "	WALL CABINET	KITCHEN	
C39	1	16 3/4 "	18 "	36 "	BASE CABINET	KITCHEN	
C40	1	14 1/4 "	15 "	36 "	BASE CABINET	KITCHEN	
C41	2	24 "	24 "	36 "	BASE CABINET	KITCHEN	
C42	1	48 "	24 "	36 "	BASE CABINET	KITCHEN	



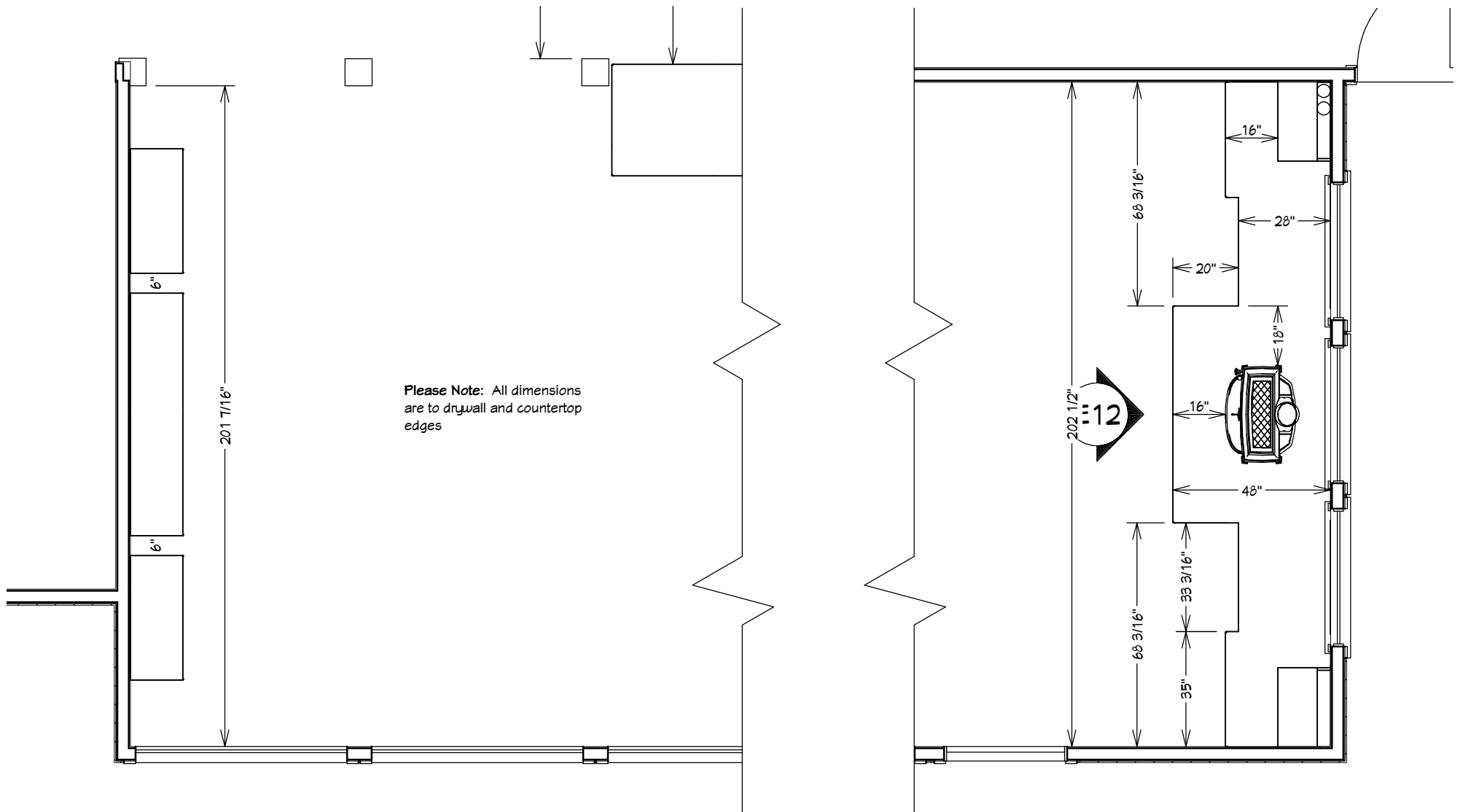
Kitchen Cabinet Layout



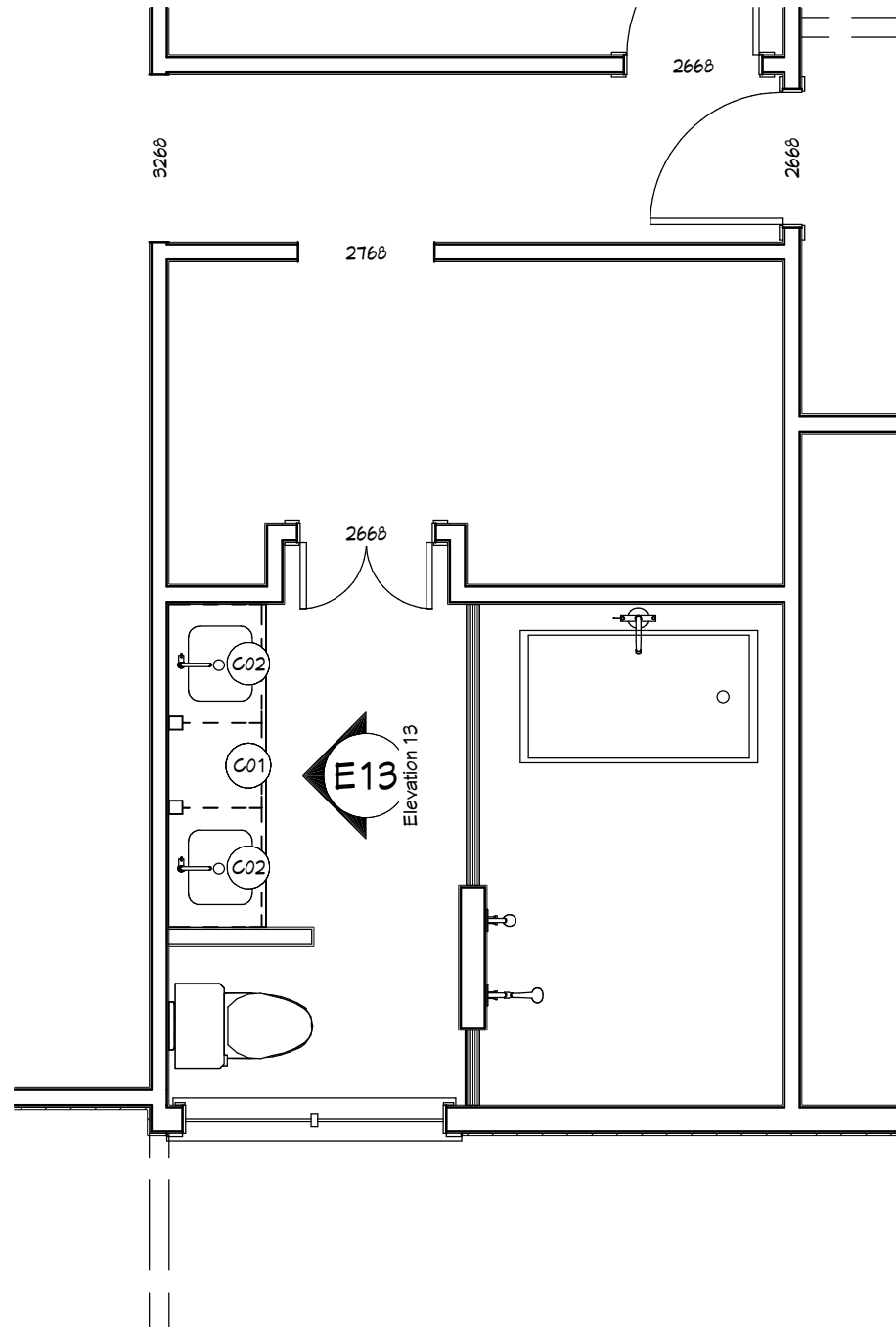
Kitchen Floorplan



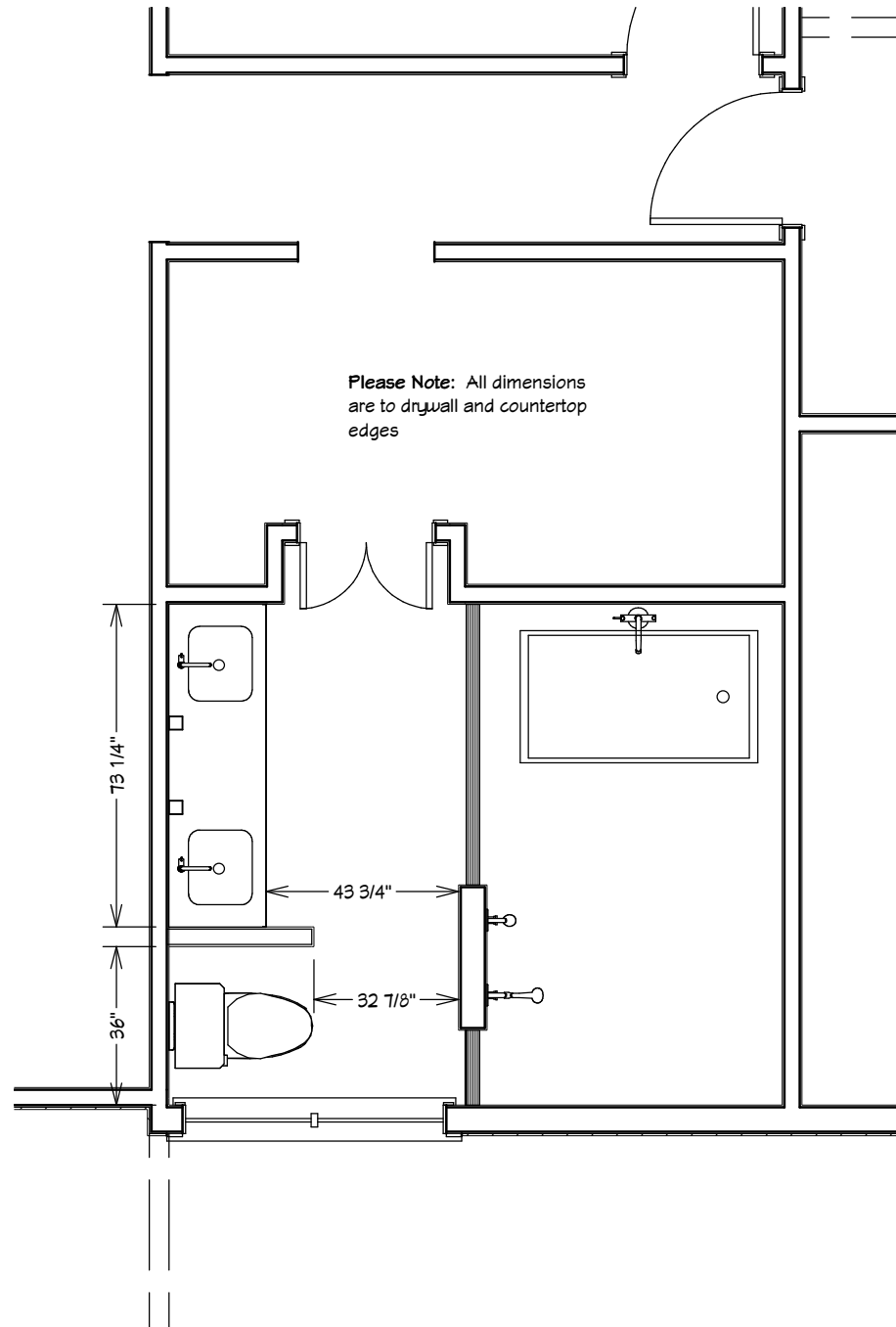
Living/Dining Room Cabinet Layout



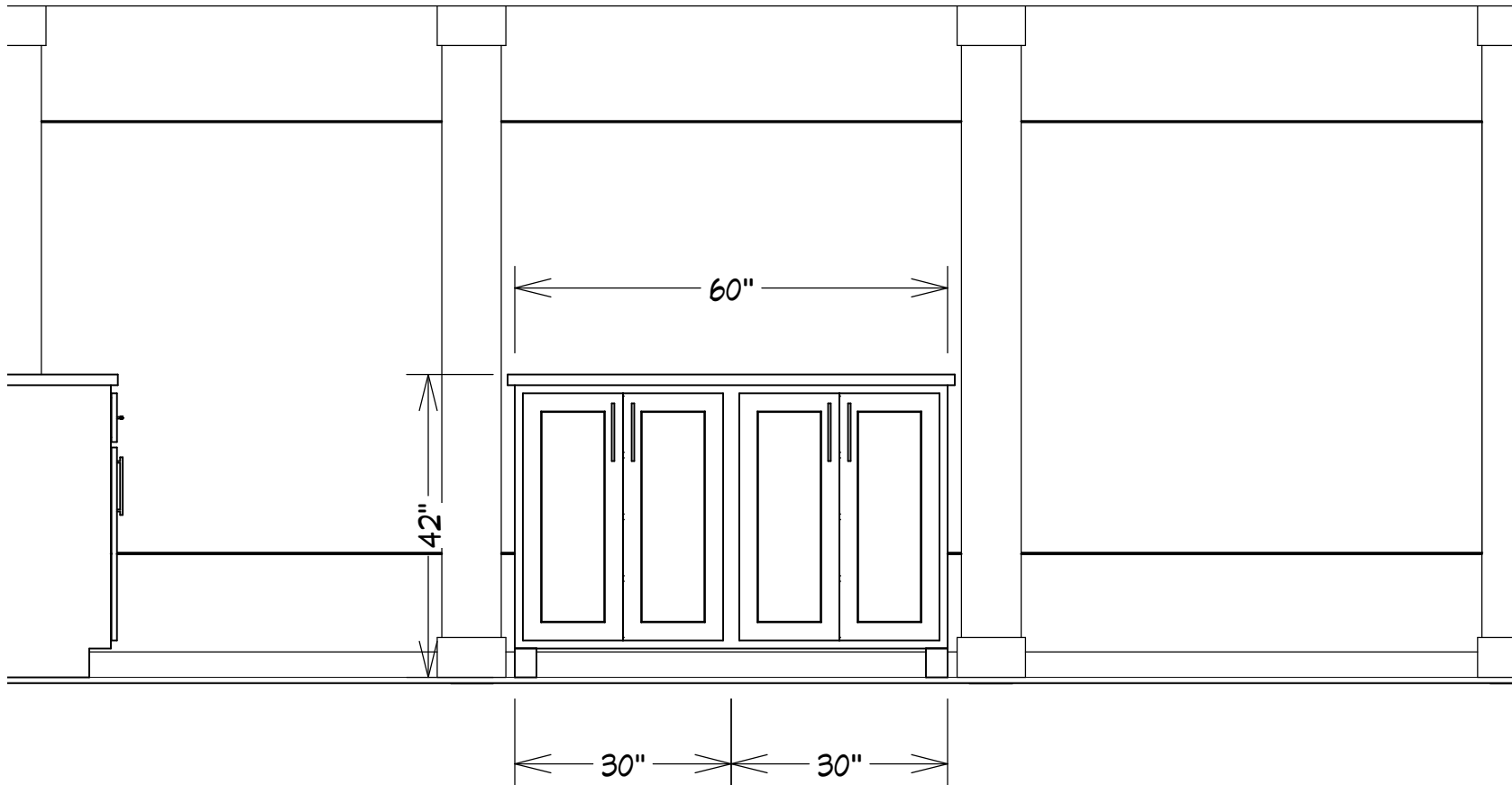
Living/Dining Room Floorplan



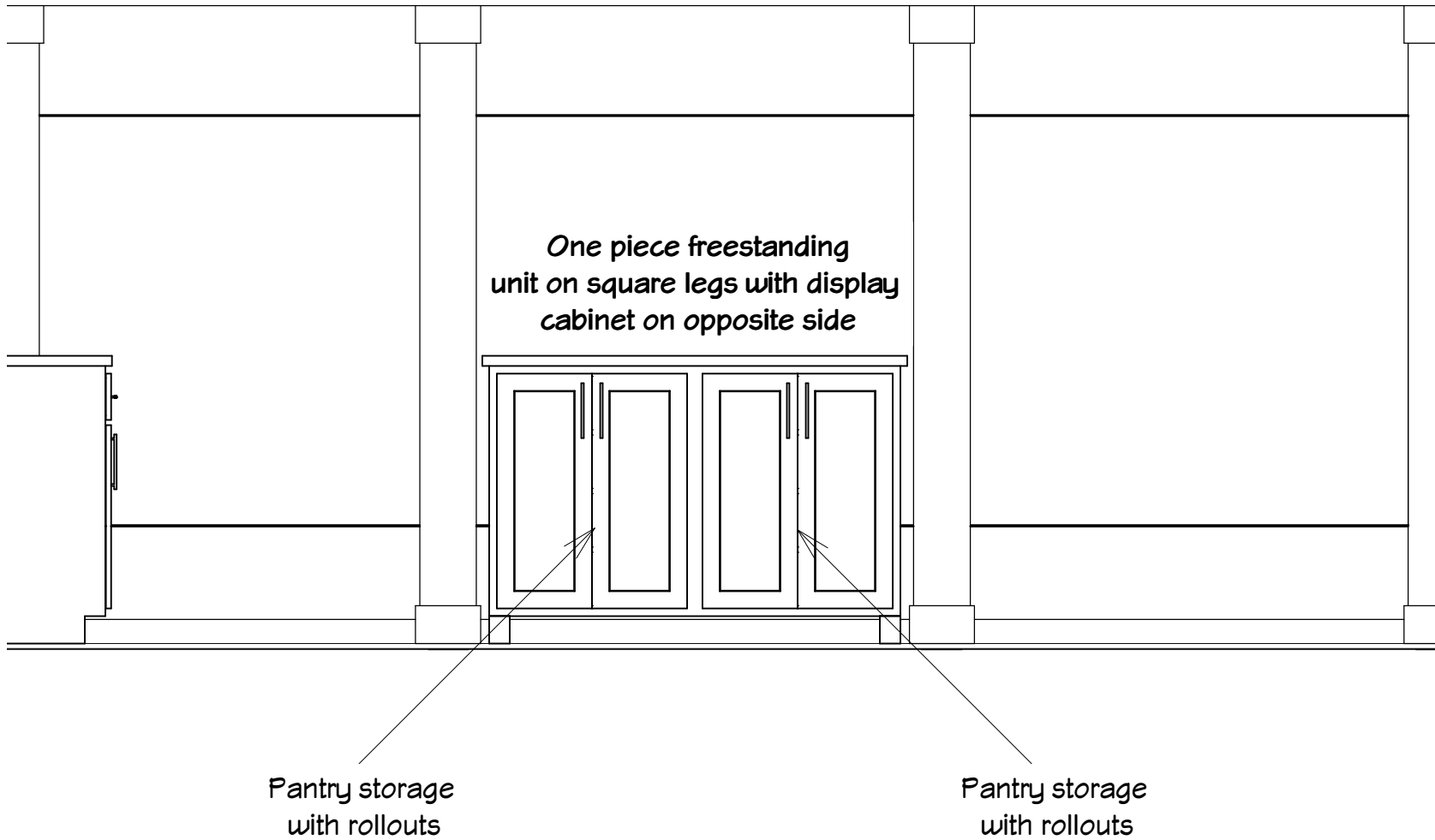
Master Bathroom Cabinet Layout



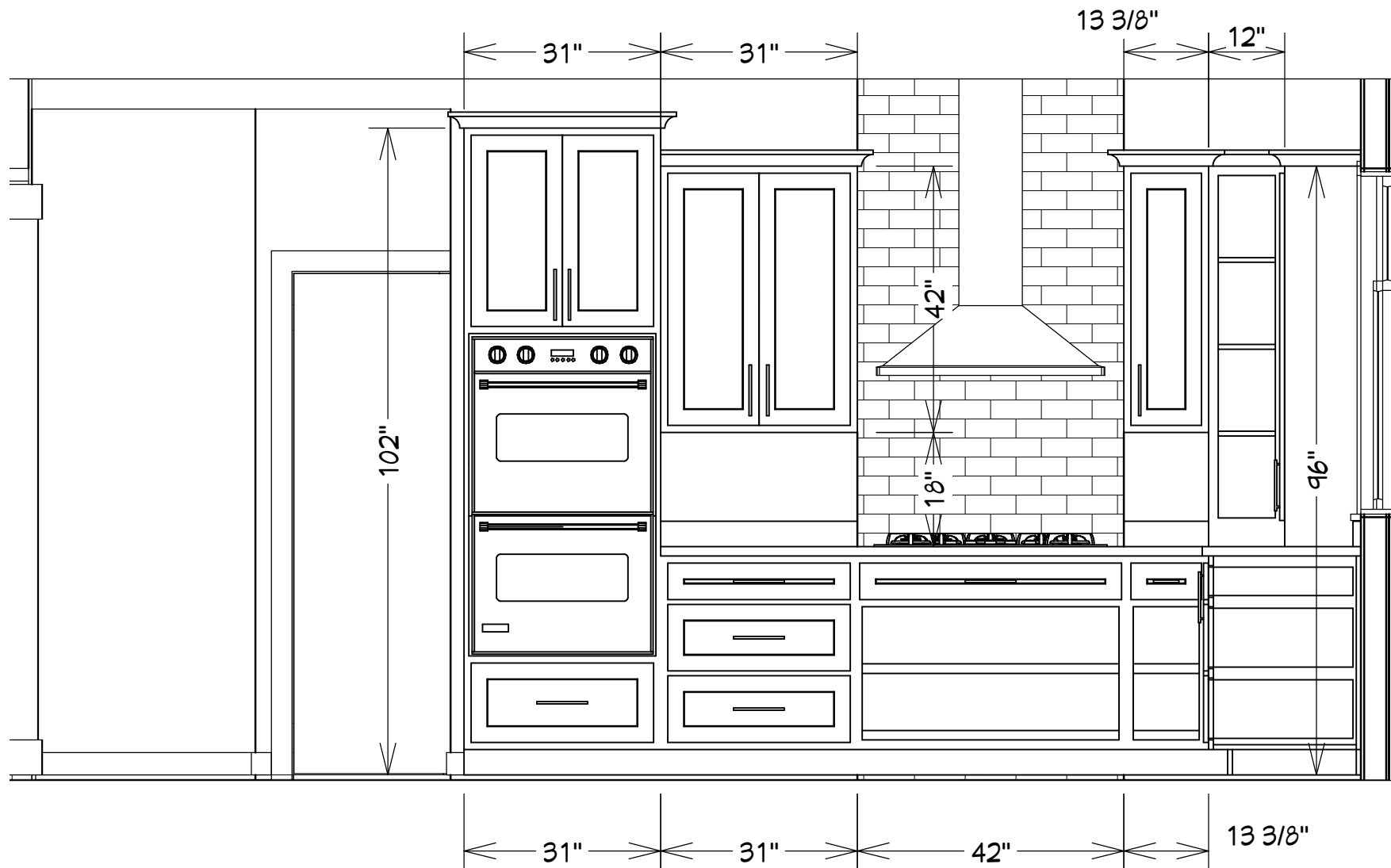
Master Bathroom Floorplan



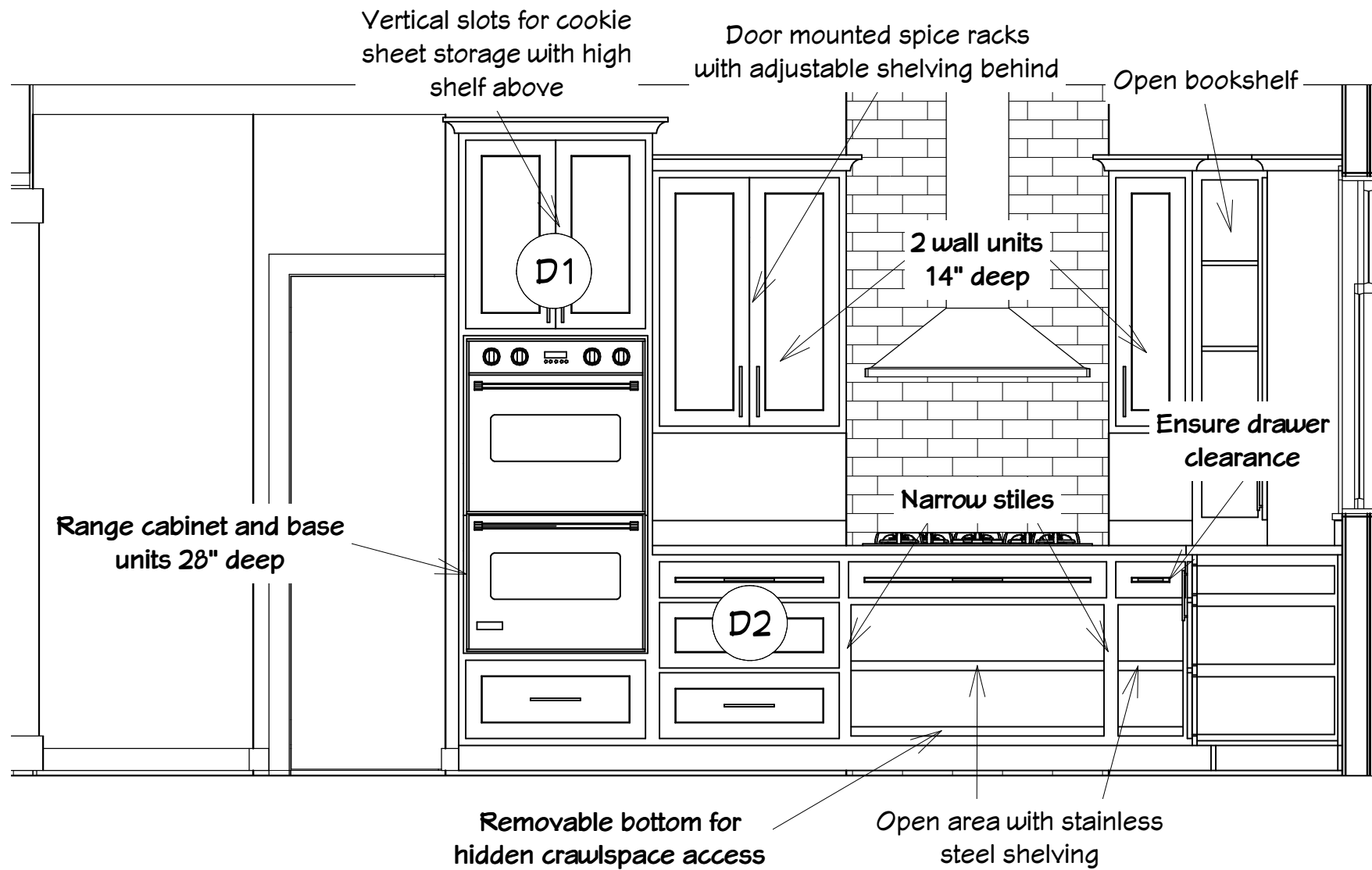
Elevation 1



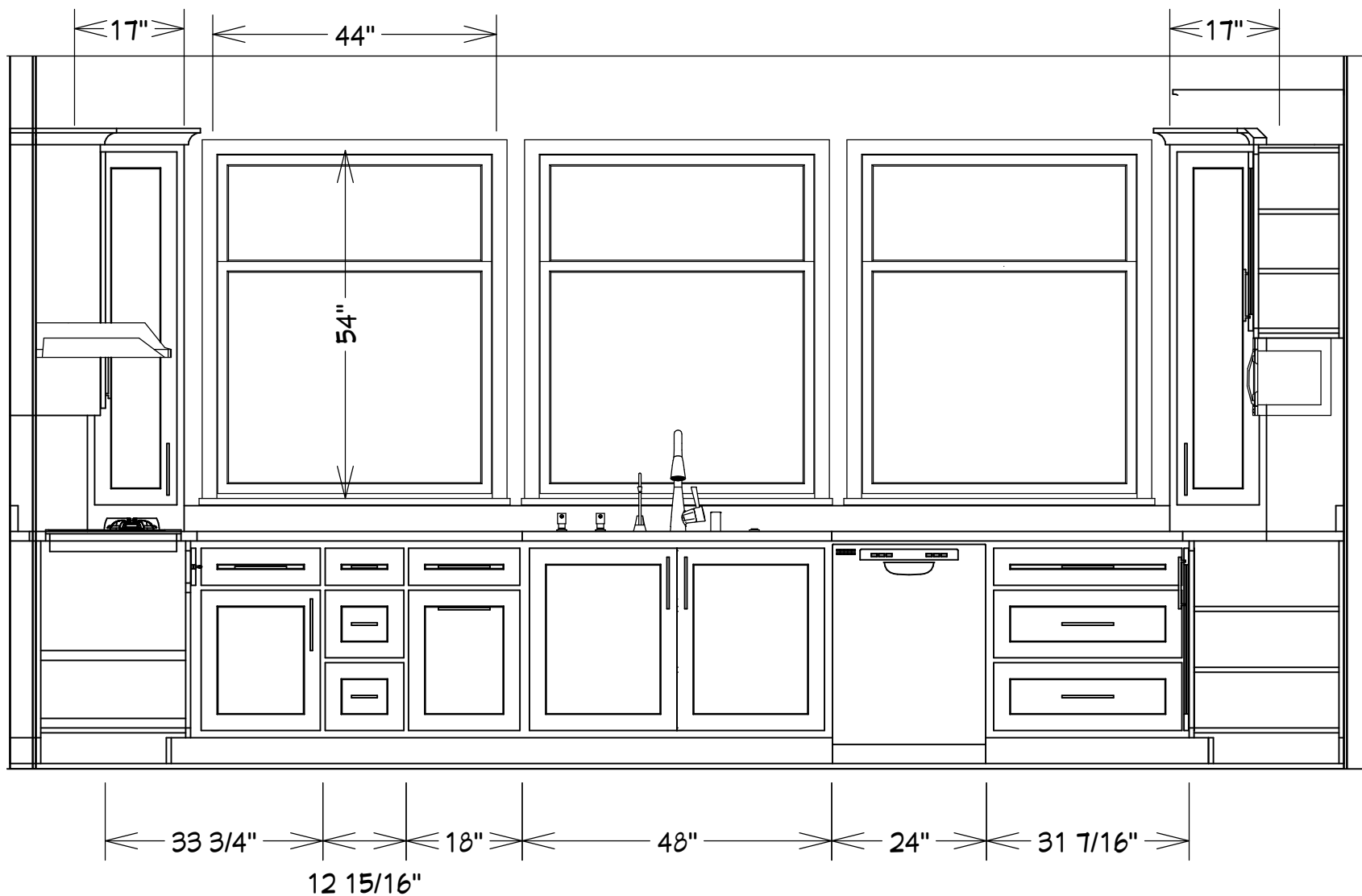
Elevation 1



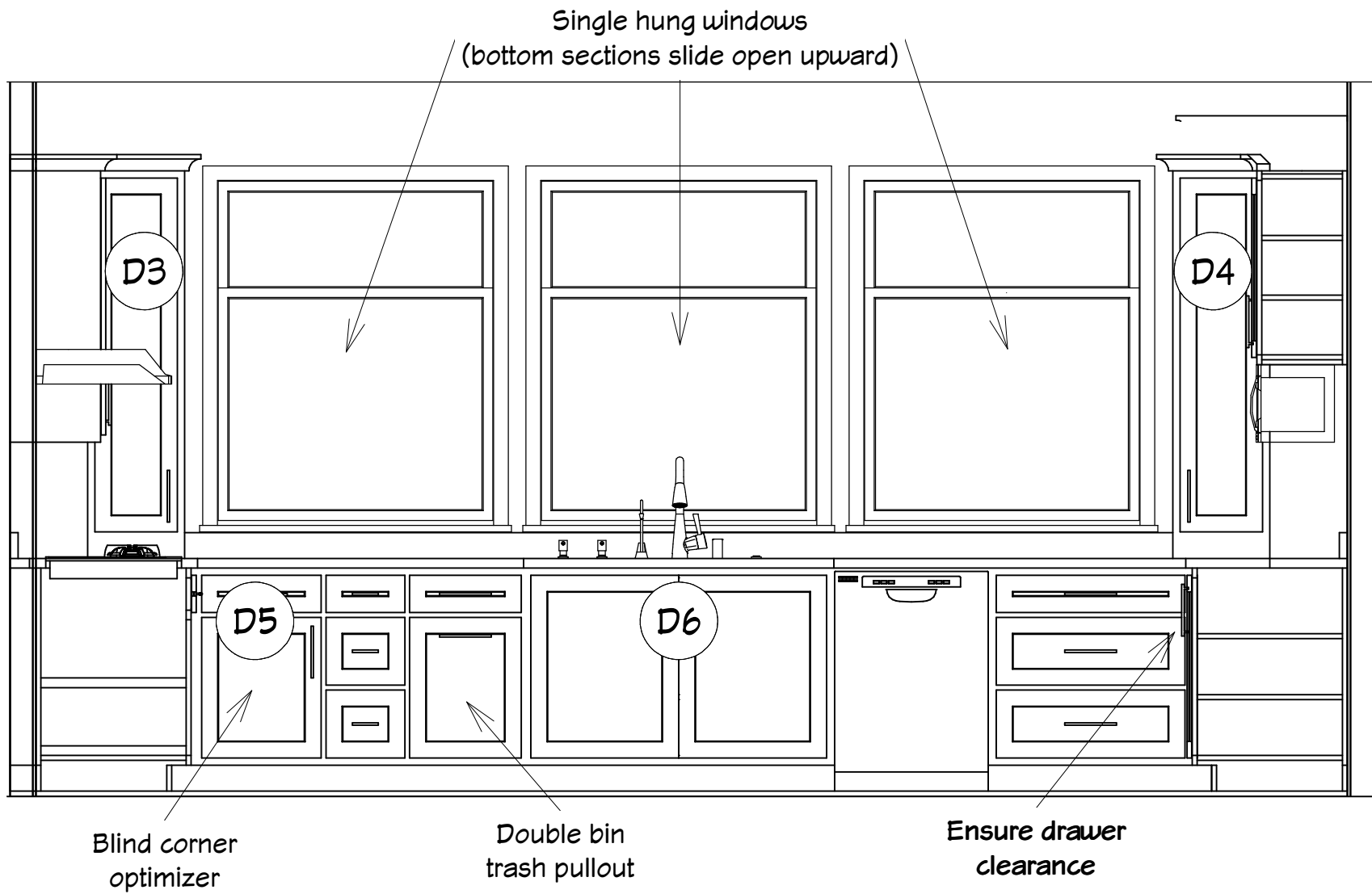
Elevation 2



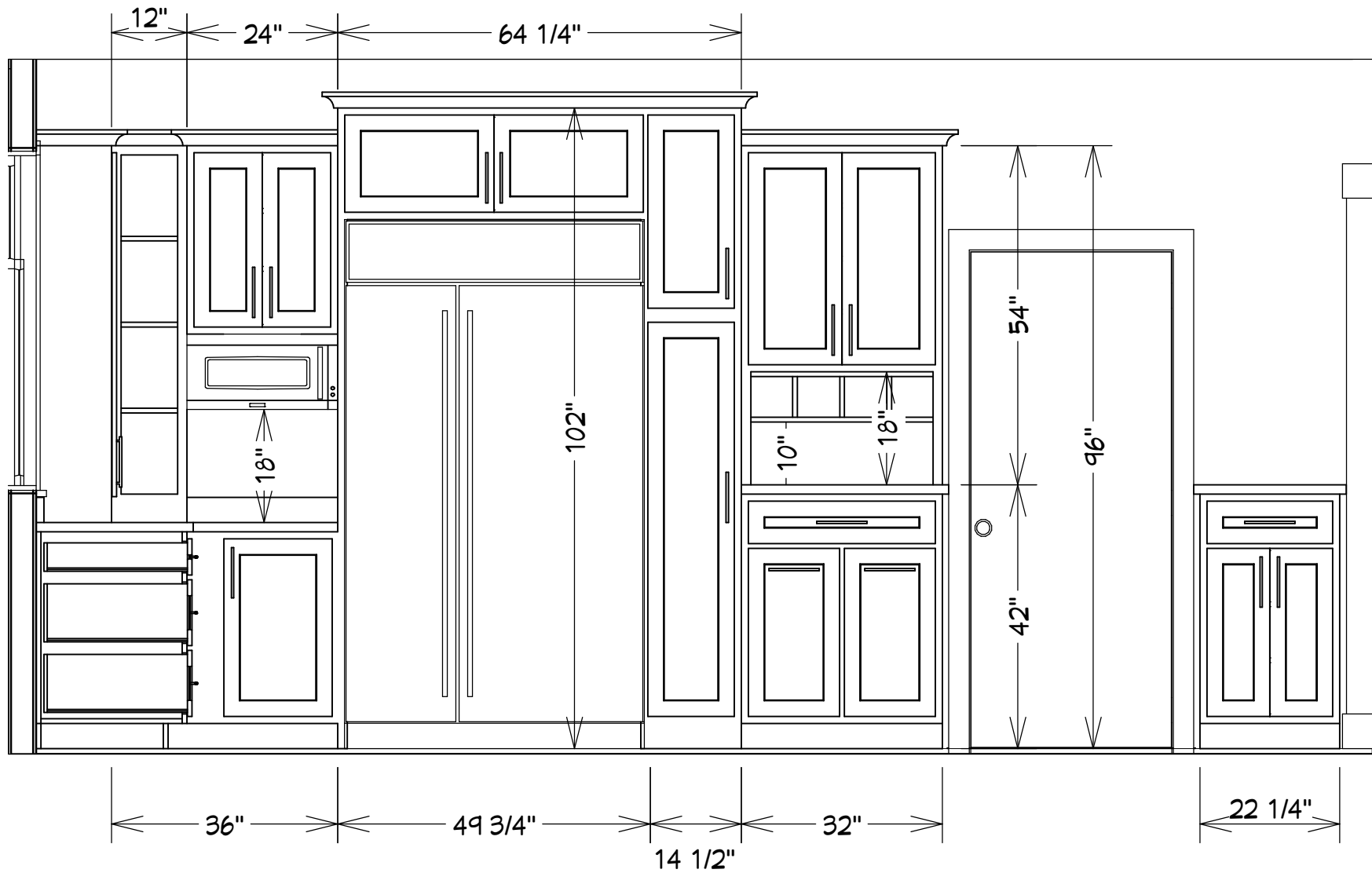
Elevation 2



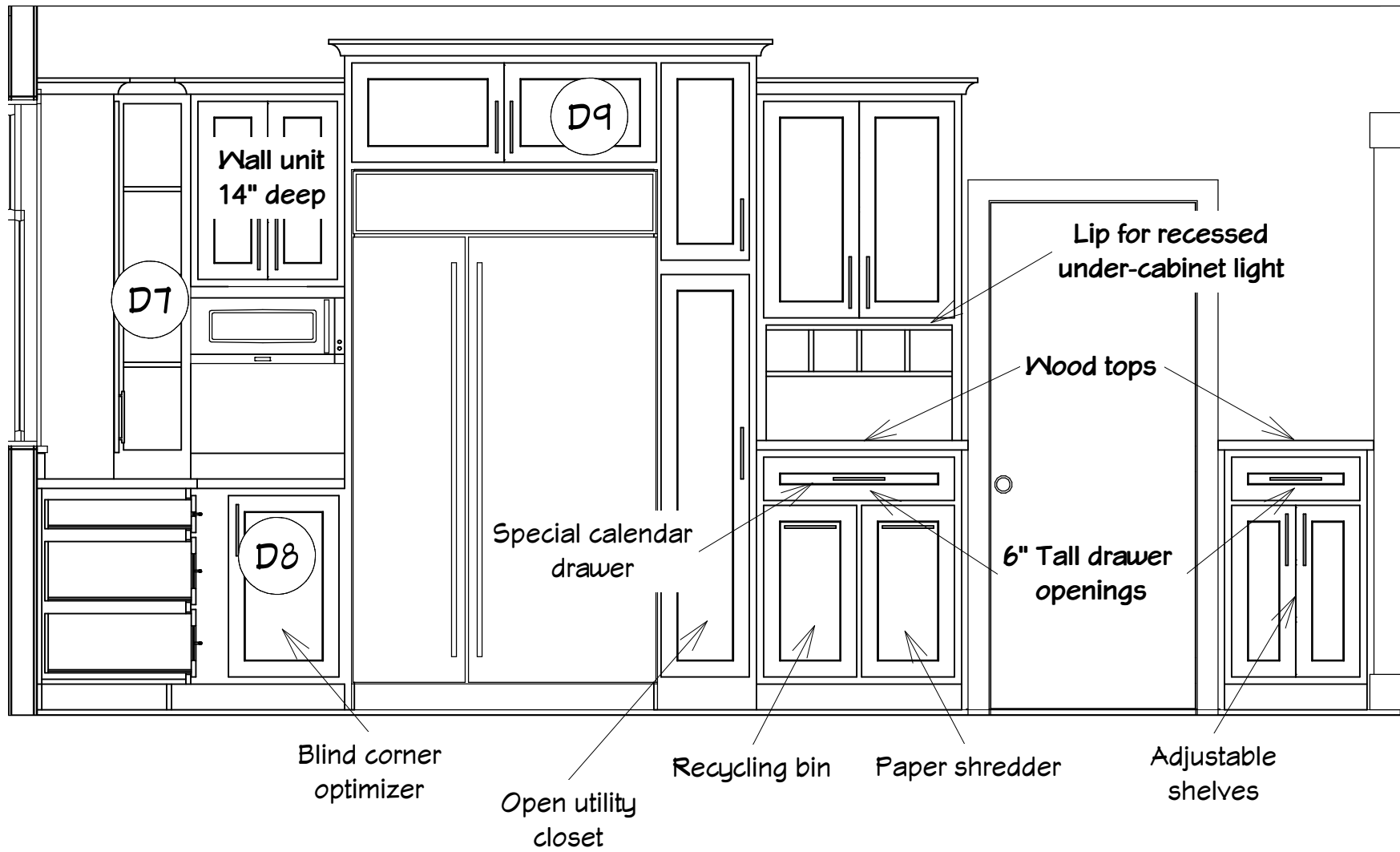
Elevation 3



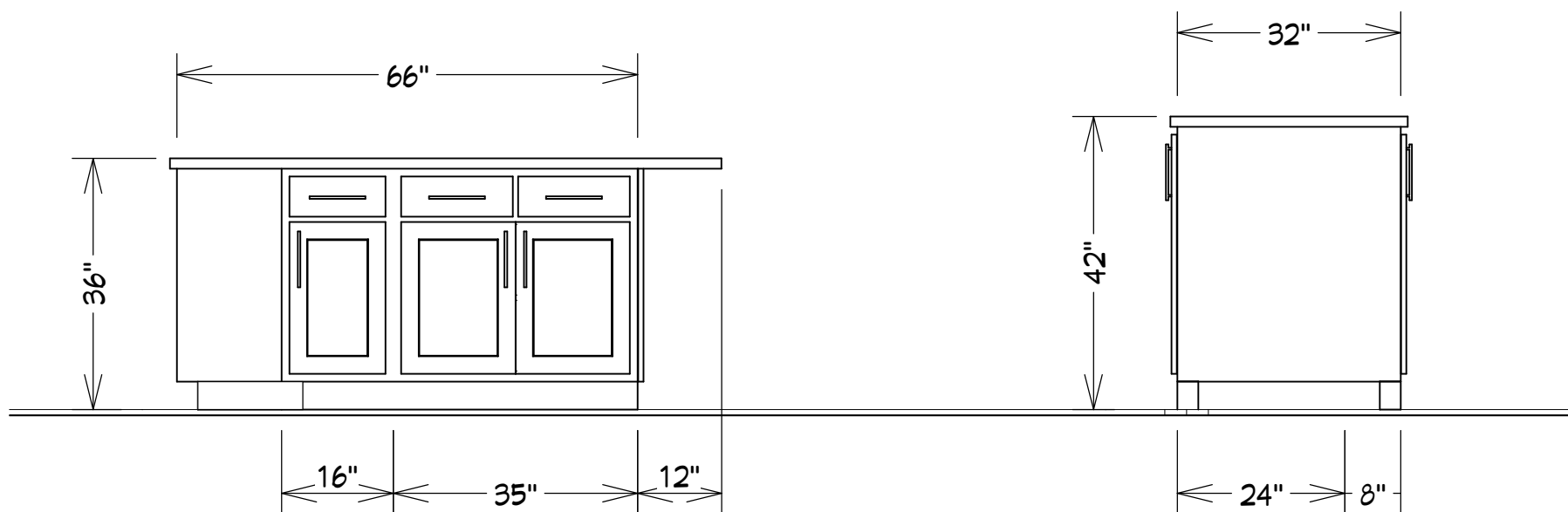
Elevation 3



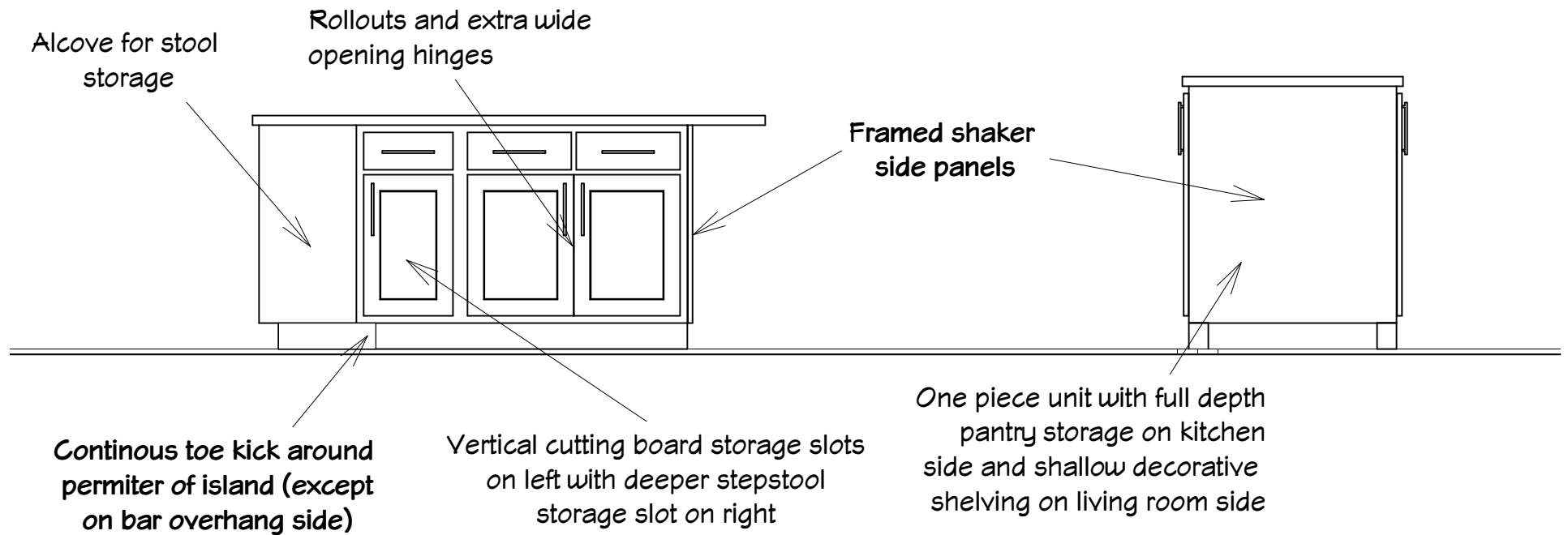
Elevation 4



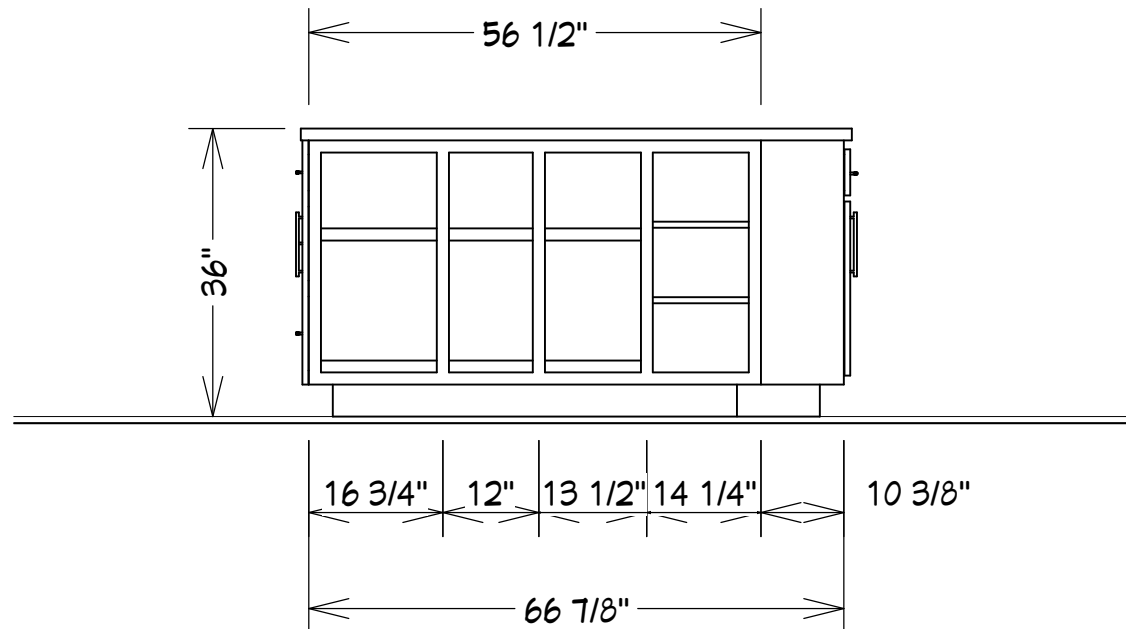
Elevation 4



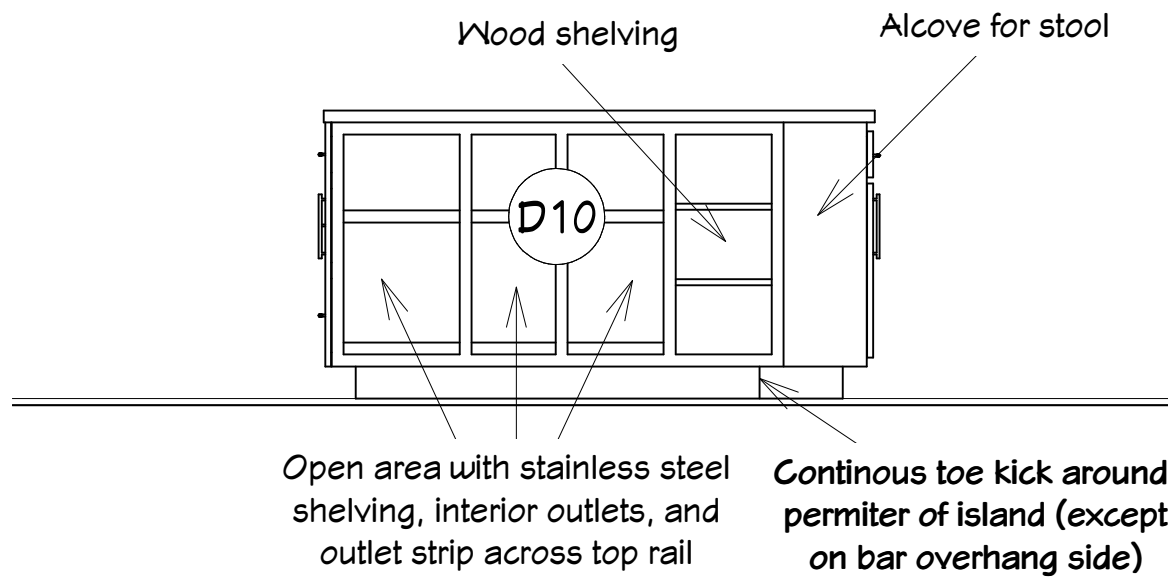
Elevation 5



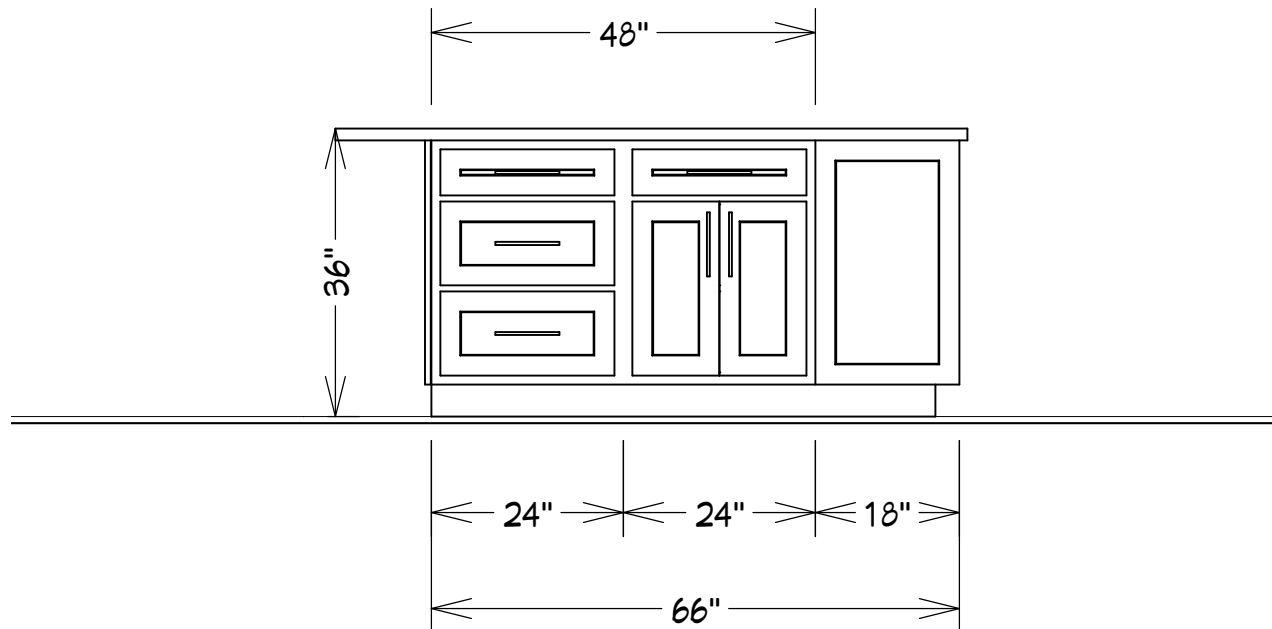
Elevation 5



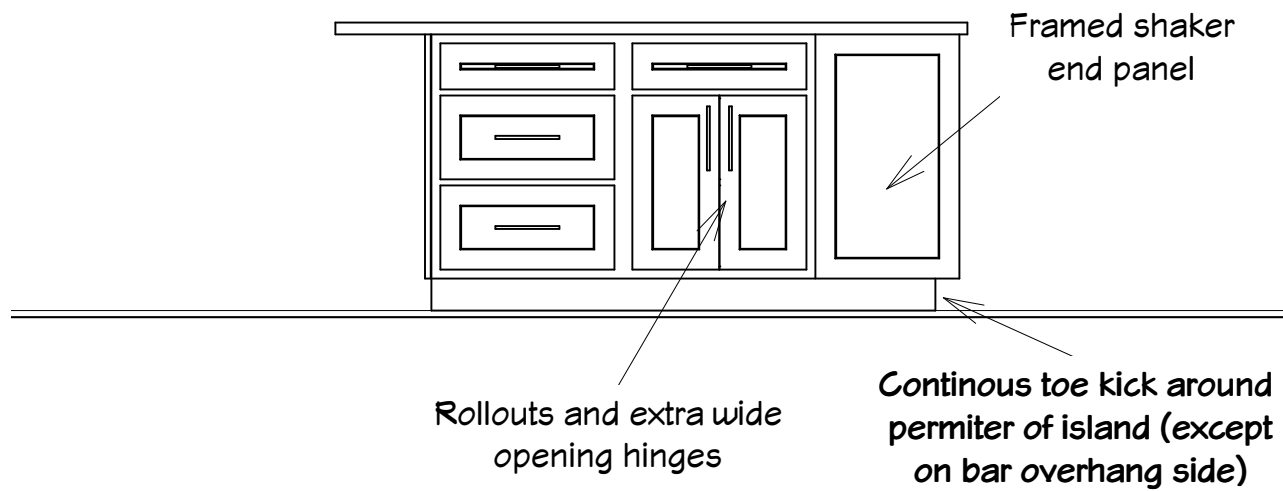
Elevation 6



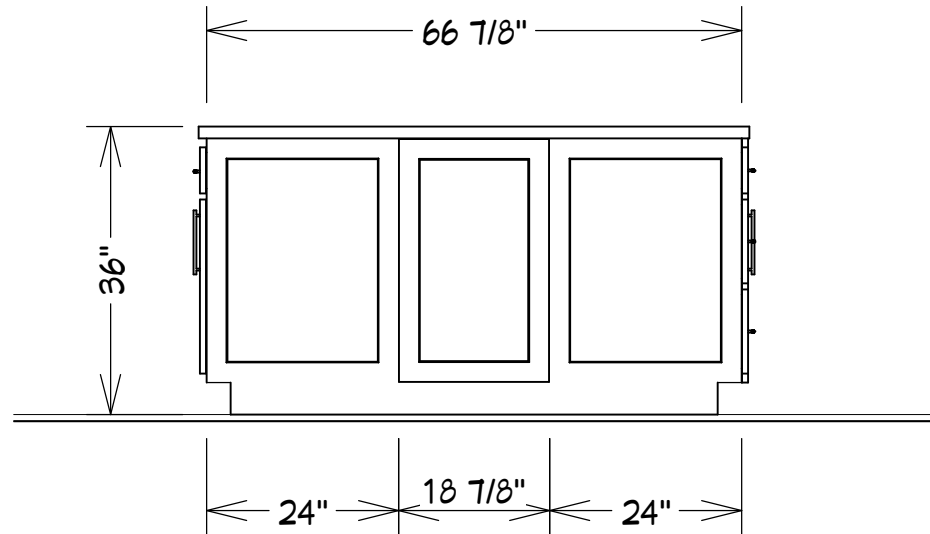
Elevation 6



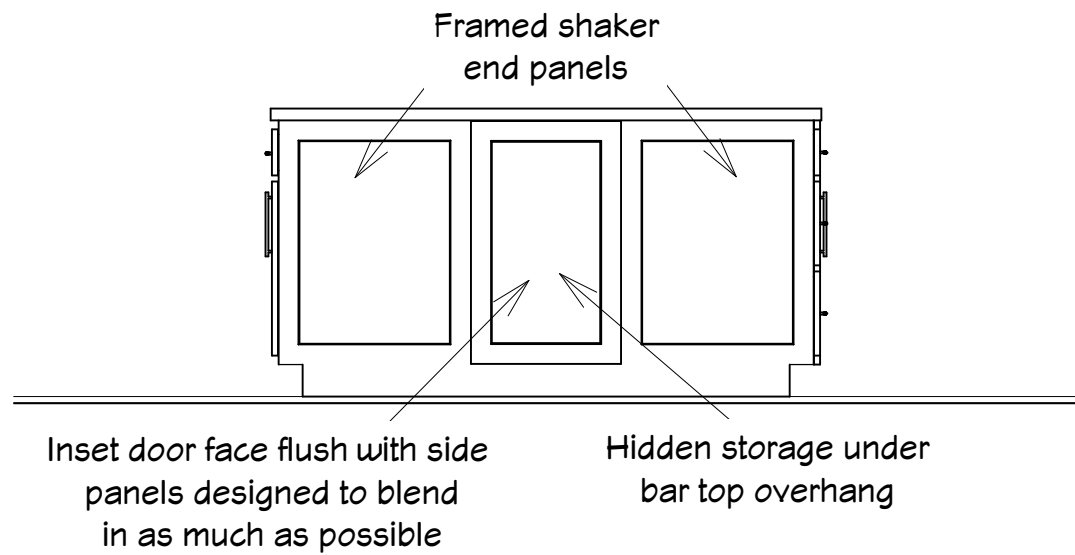
Elevation 7



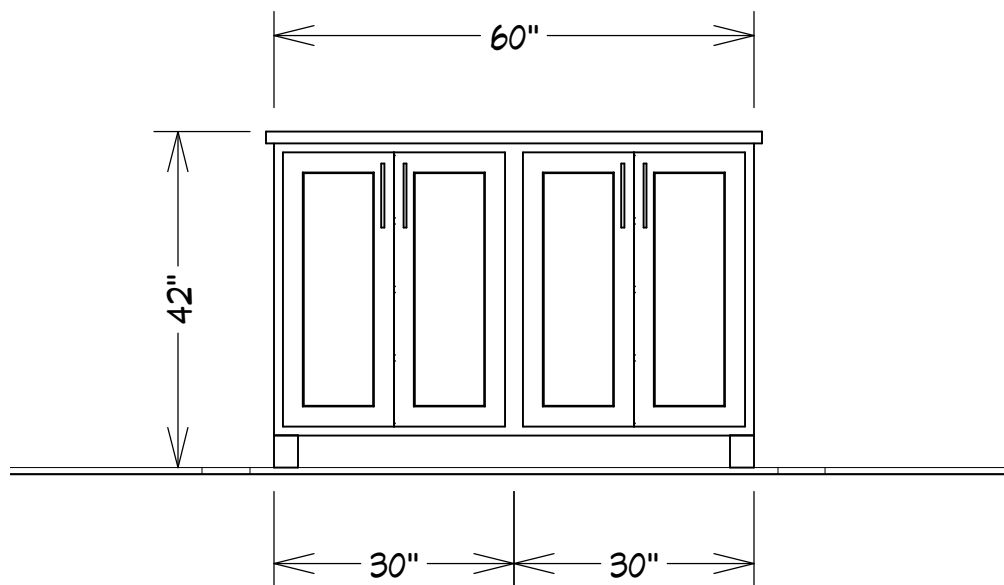
Elevation 7



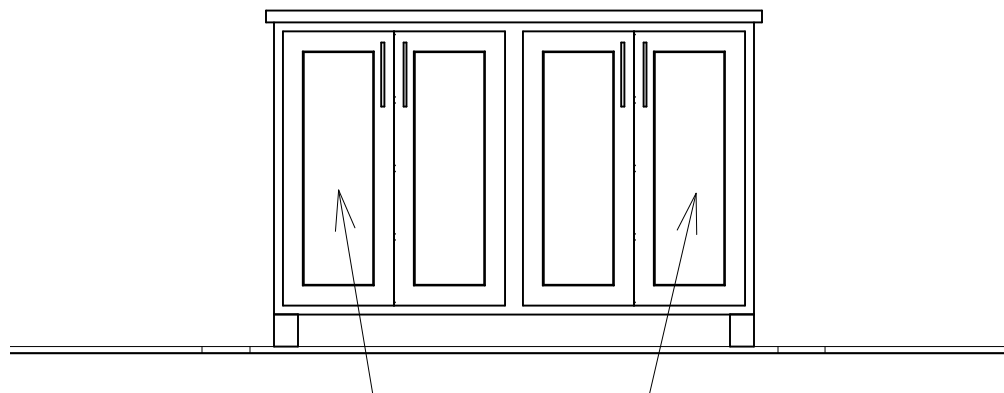
Elevation 8



Elevation 8

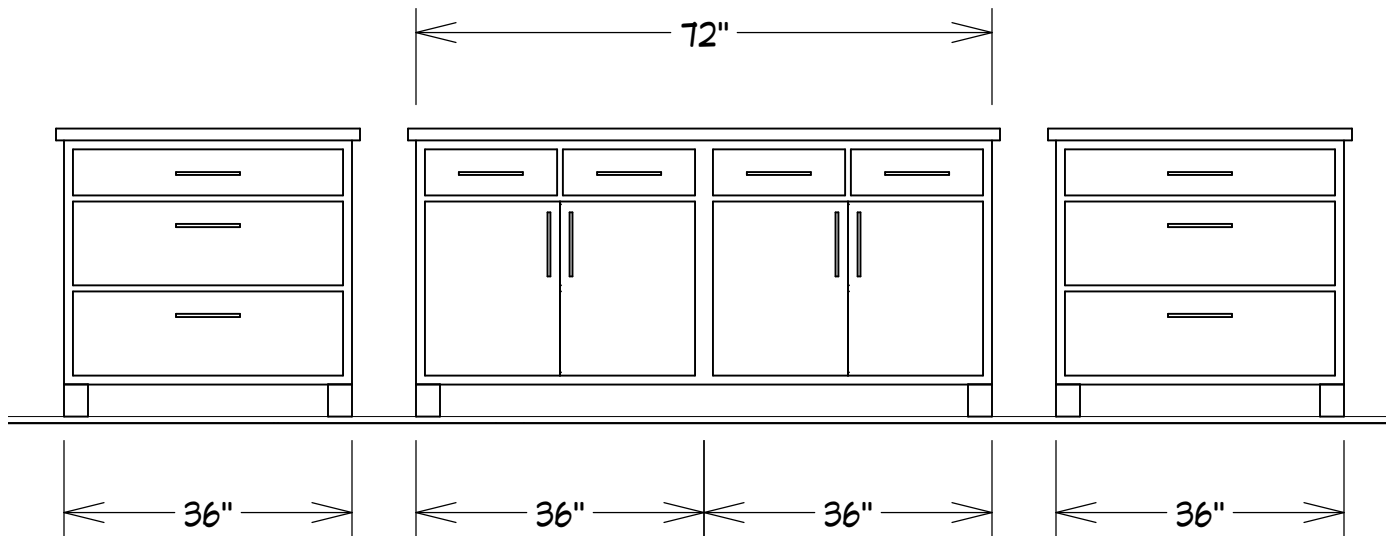


Elevation 9



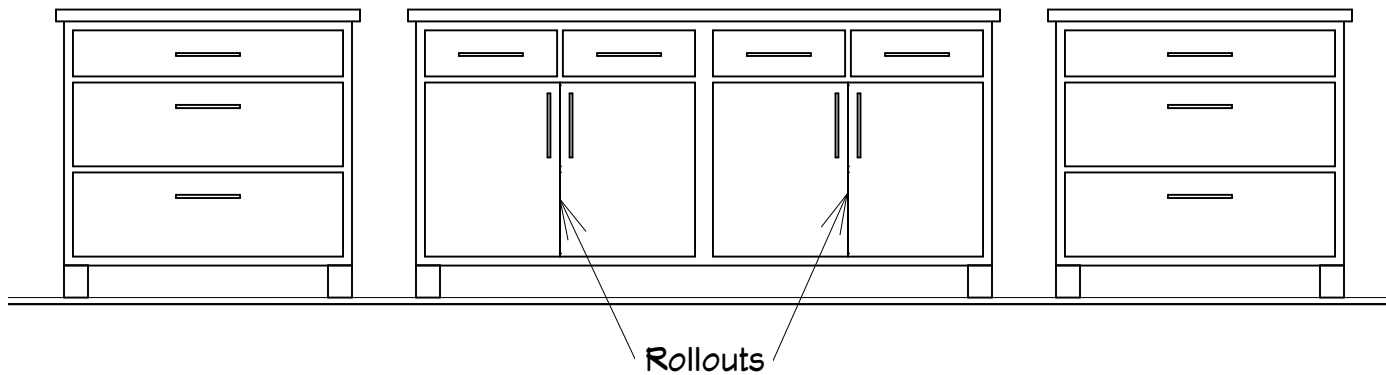
*Glass doors over
shallow decorative cabinet
with adjustable shelving*

Elevation 9

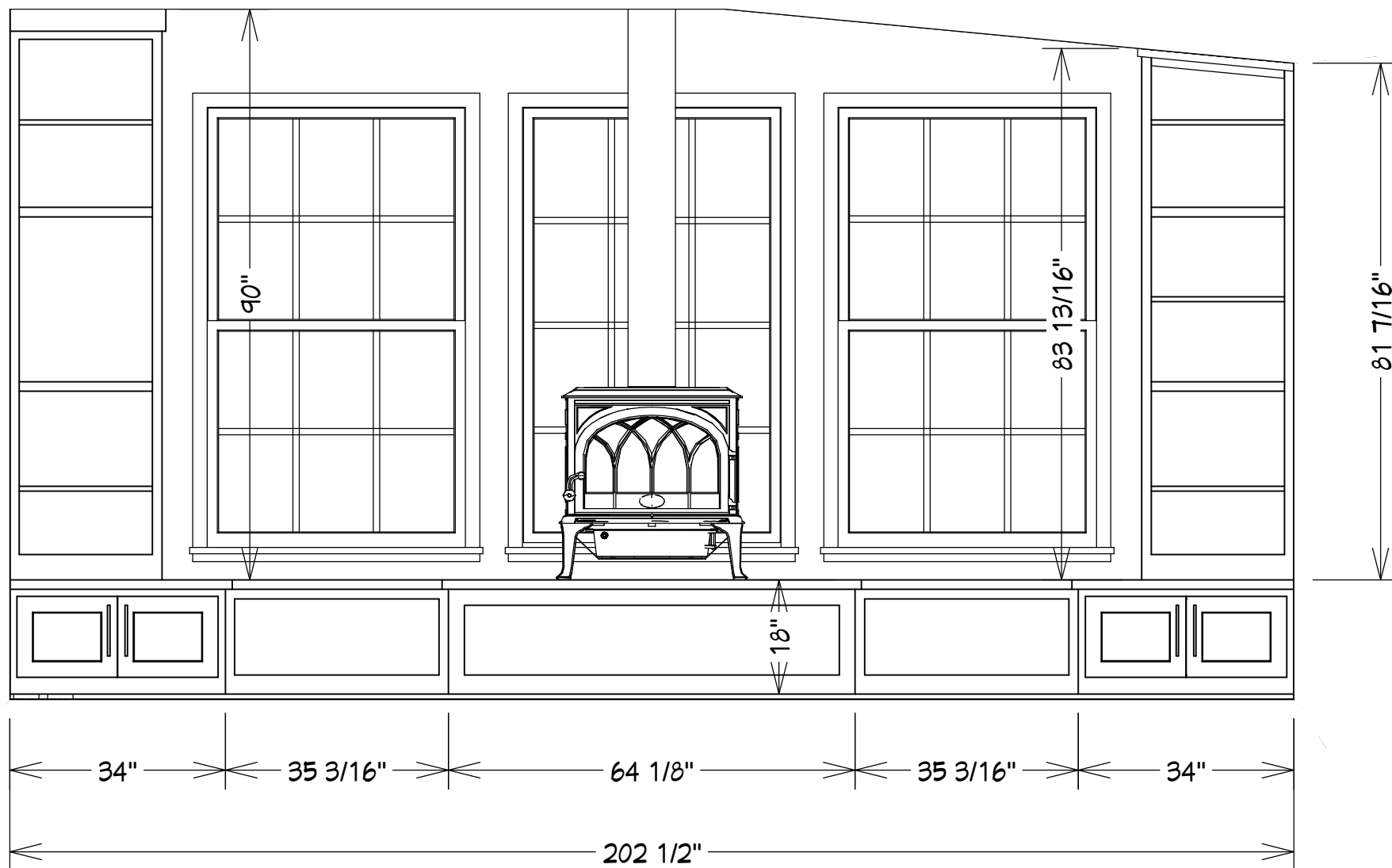


Elevation 11

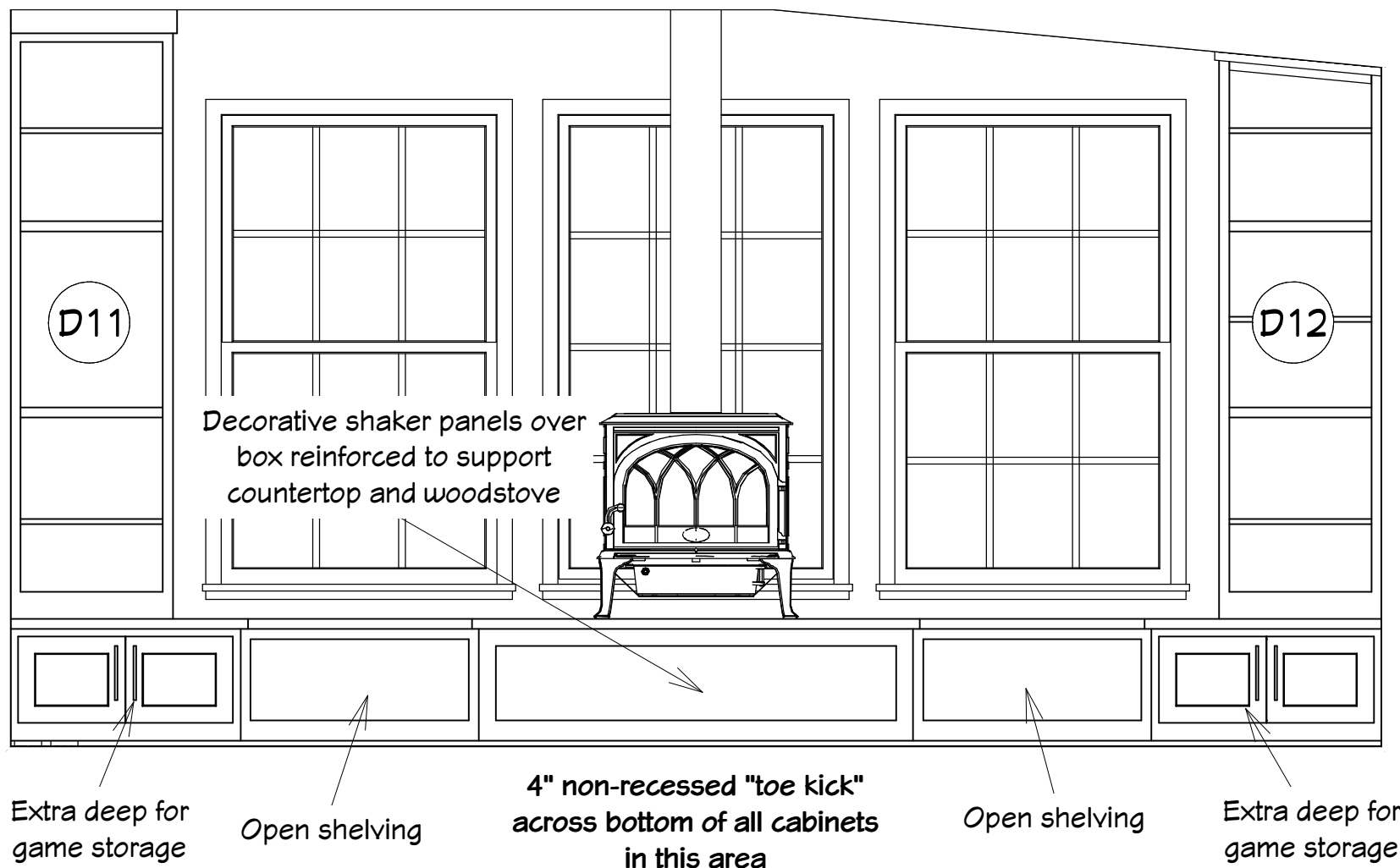
Freestanding units
on square legs



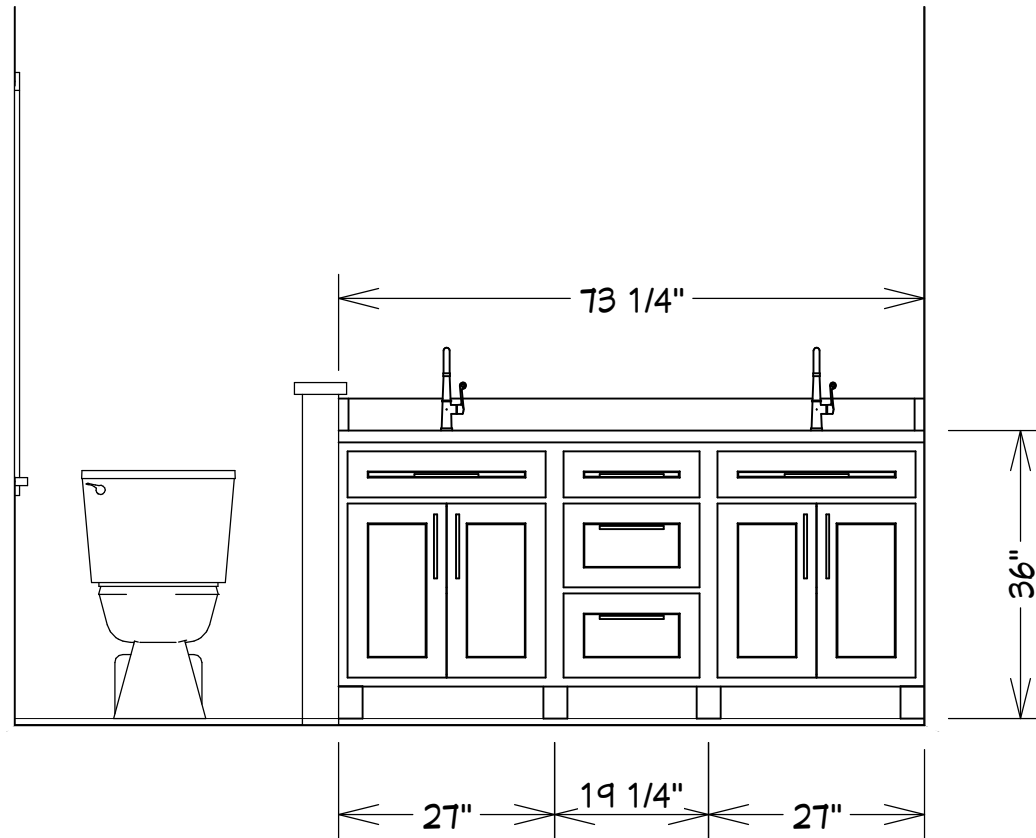
Elevation 11



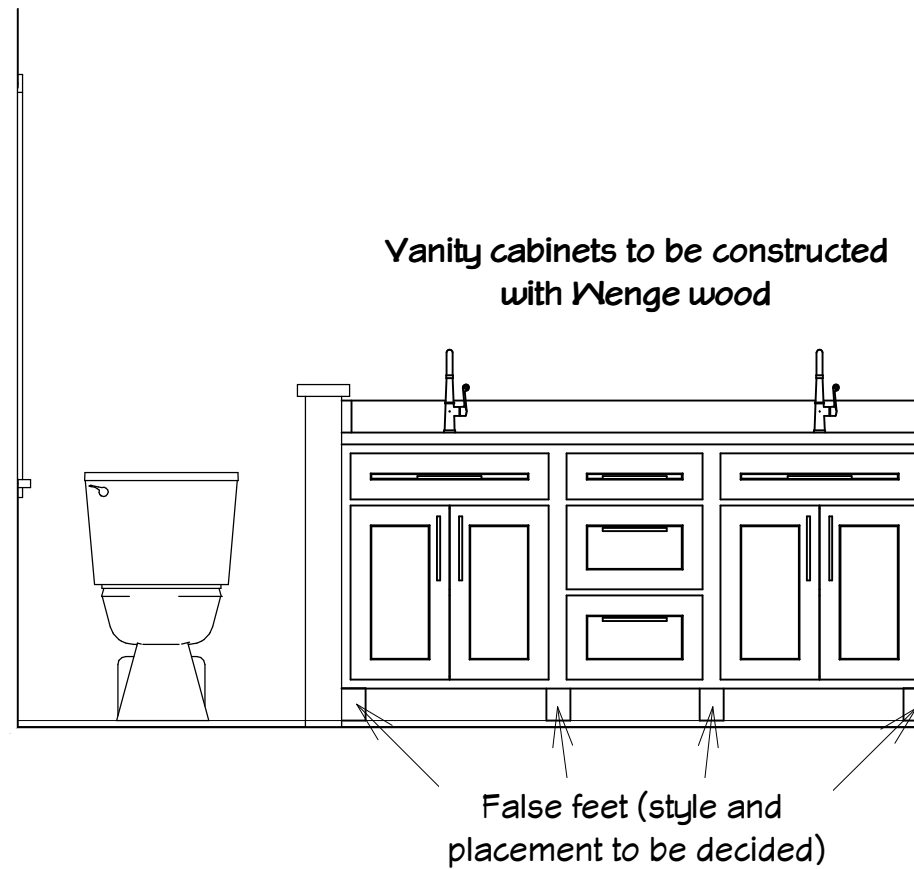
Elevation 12



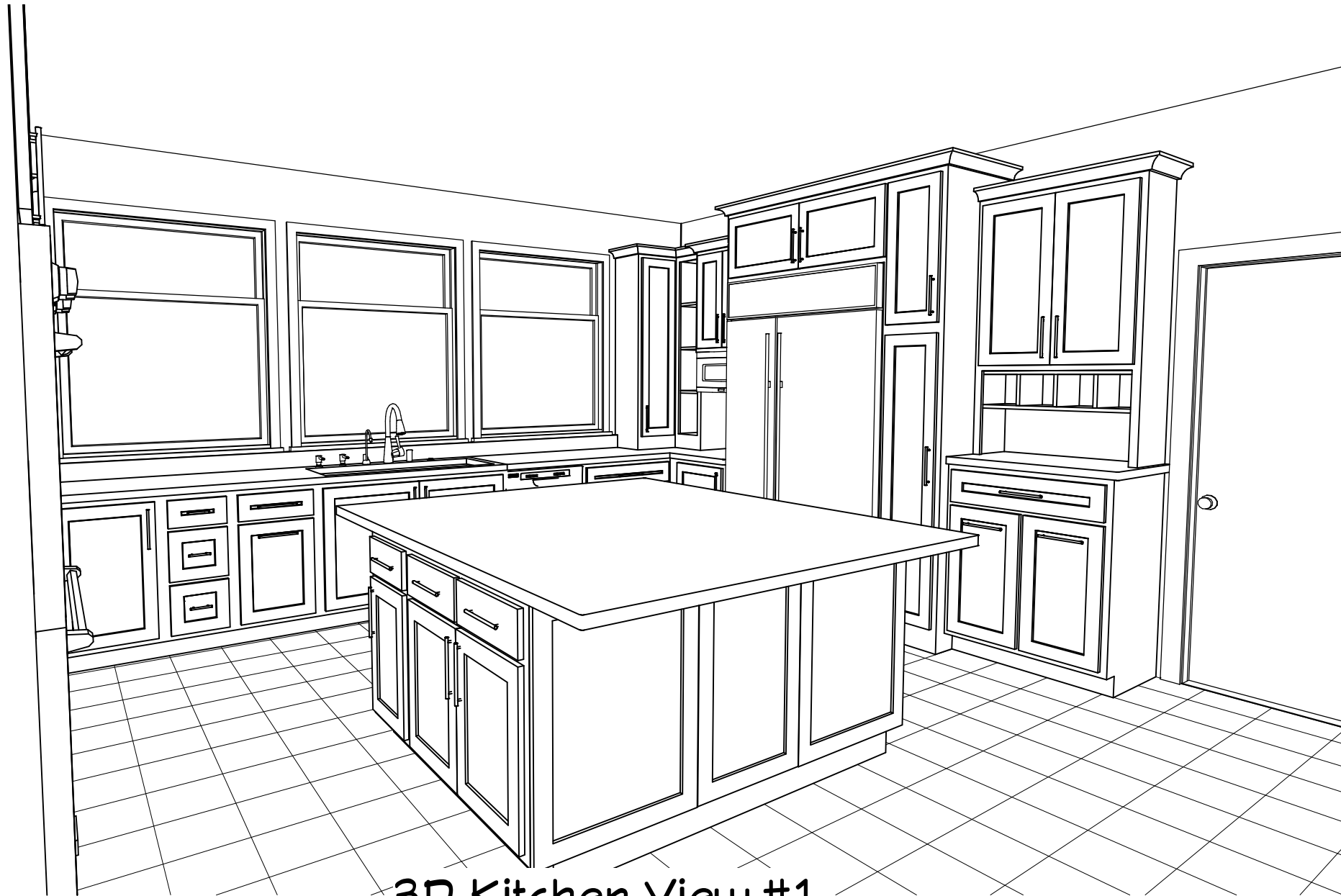
Elevation 12



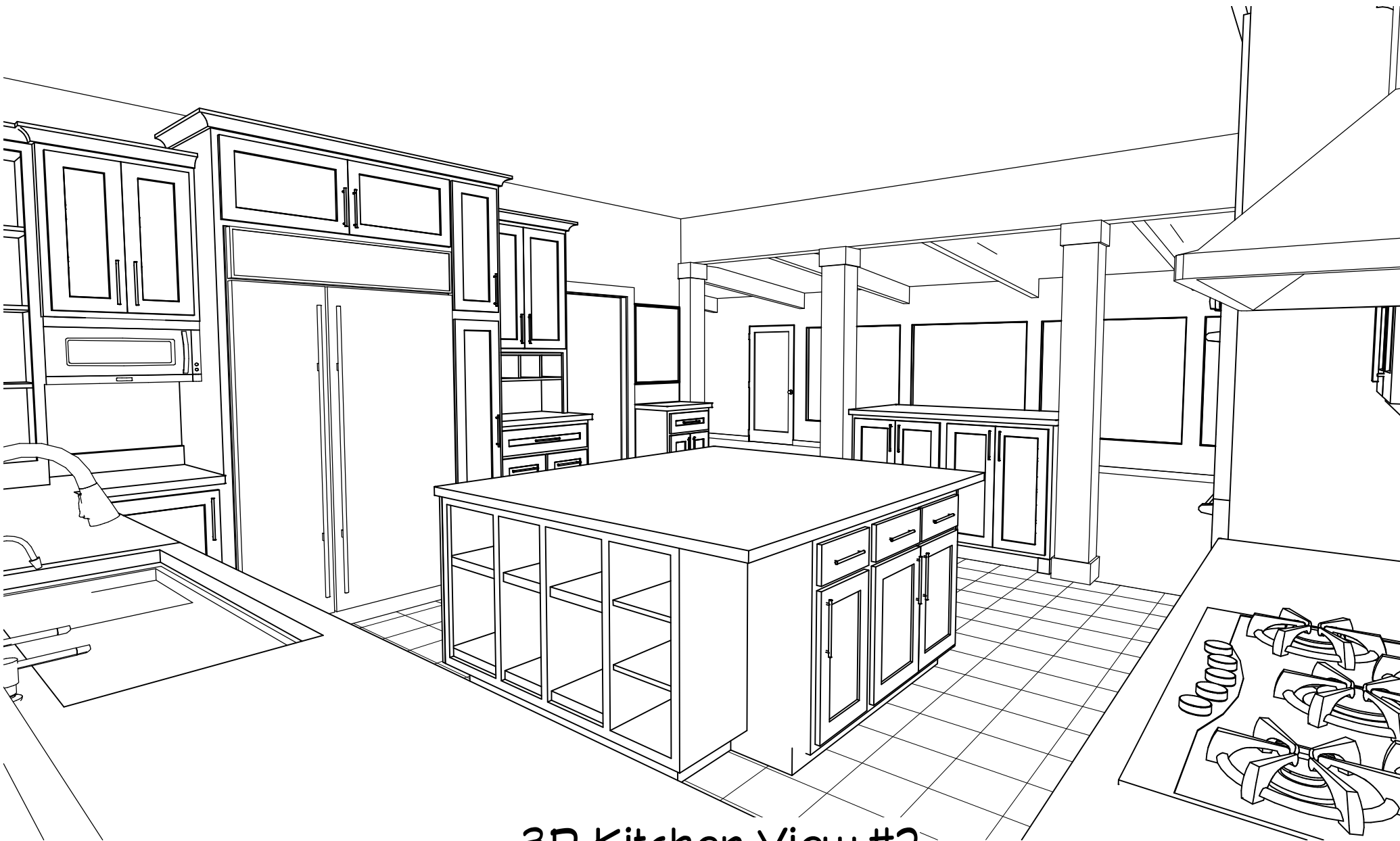
Elevation 13



Elevation 13



3D Kitchen View #1



3D Kitchen View #2



3D Kitchen View #3



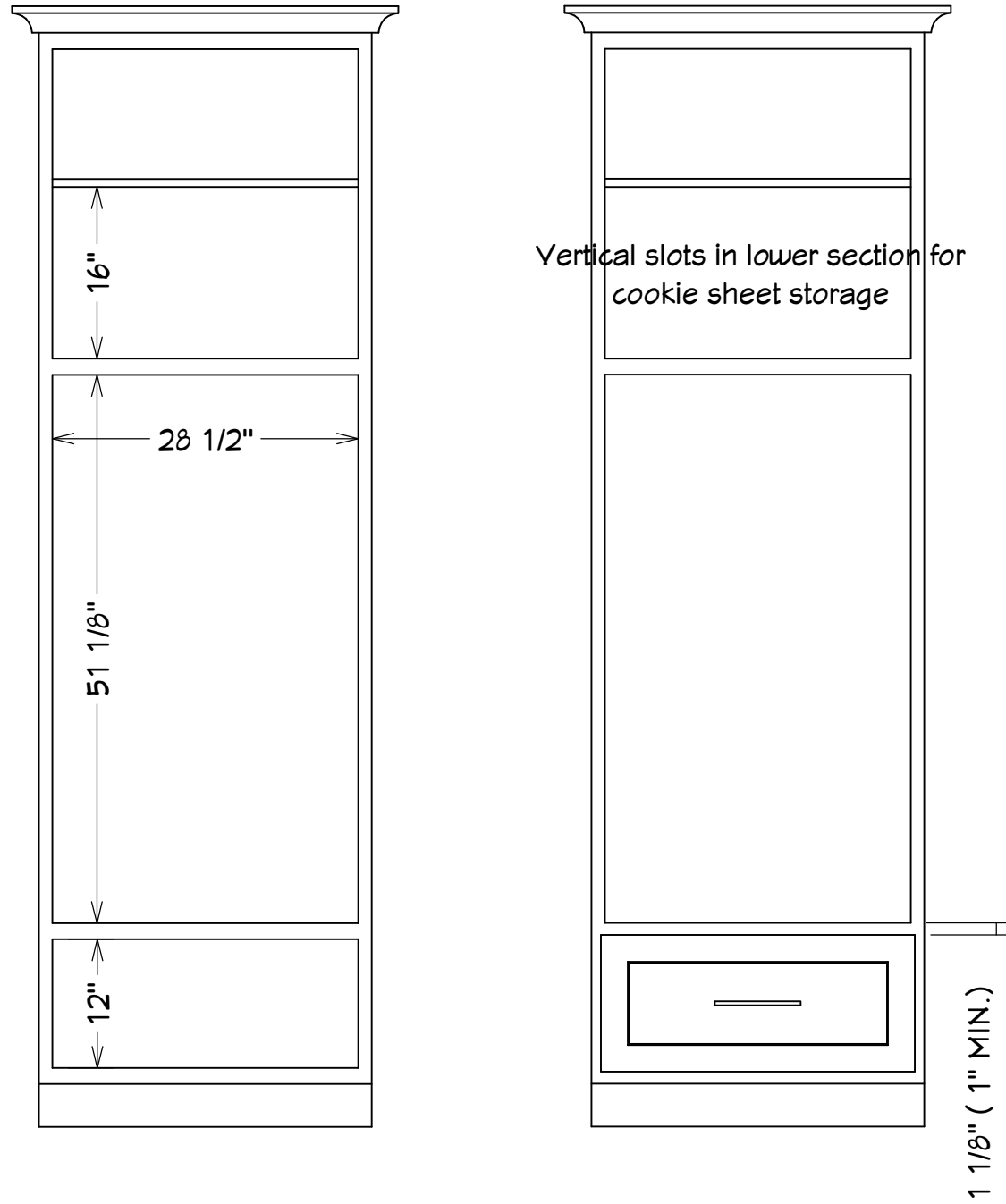
3D Kitchen View #4



3D Fireplace View



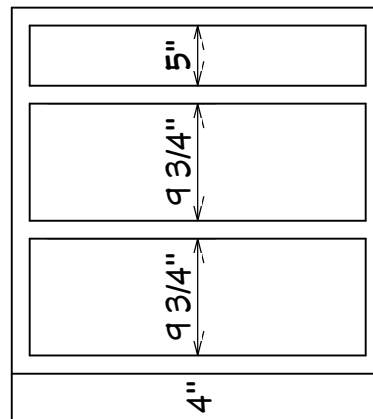
3D Credenza/display cabinet view



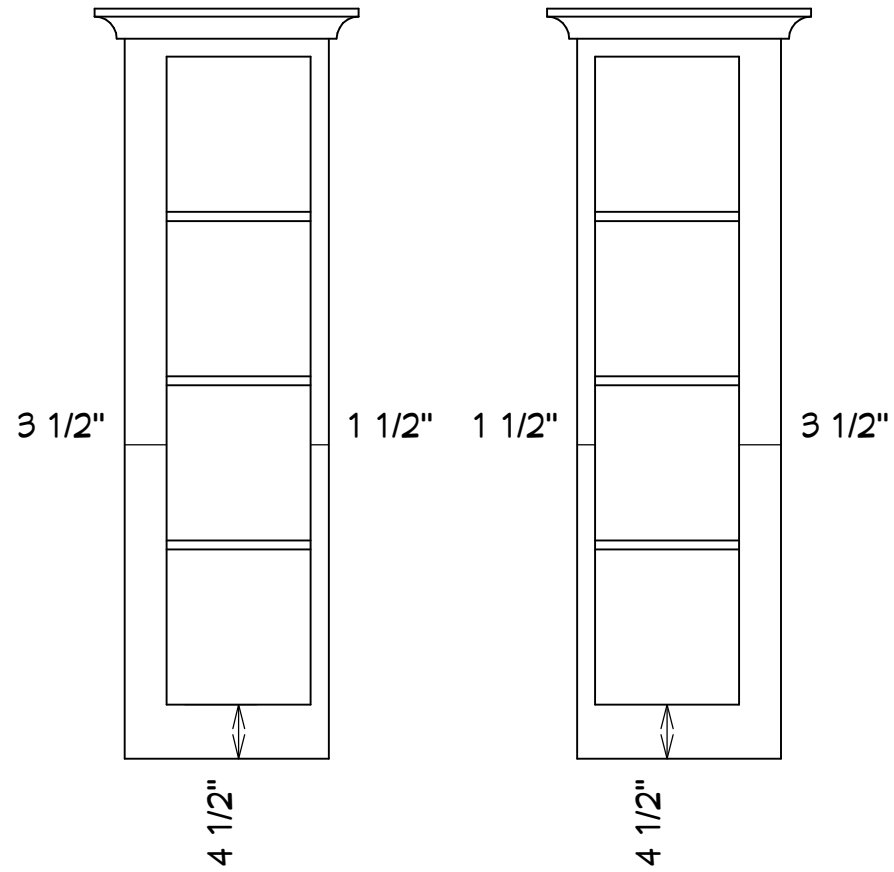
Detail 1

STANDARD DRAWER BASE DETAIL

Unless otherwise noted, basic drawer base layout to be continuous throughout project. Top drawer opening to be 5" (other dimensions may vary to accommodate cabinet construction methods used)

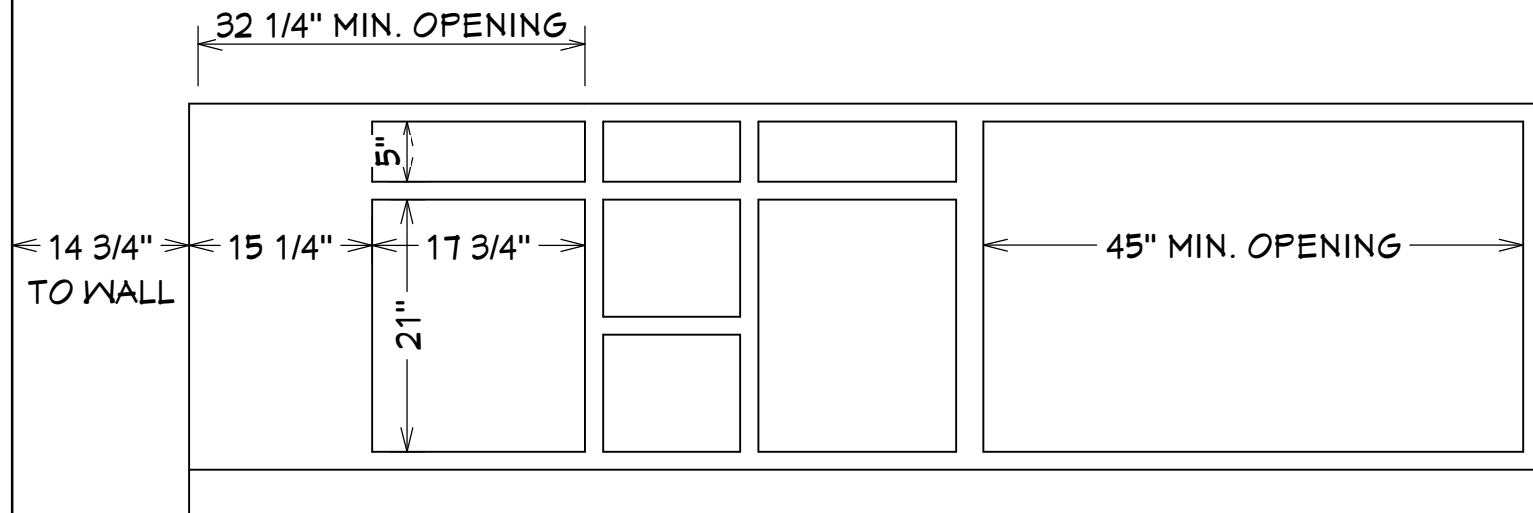


Detail 2



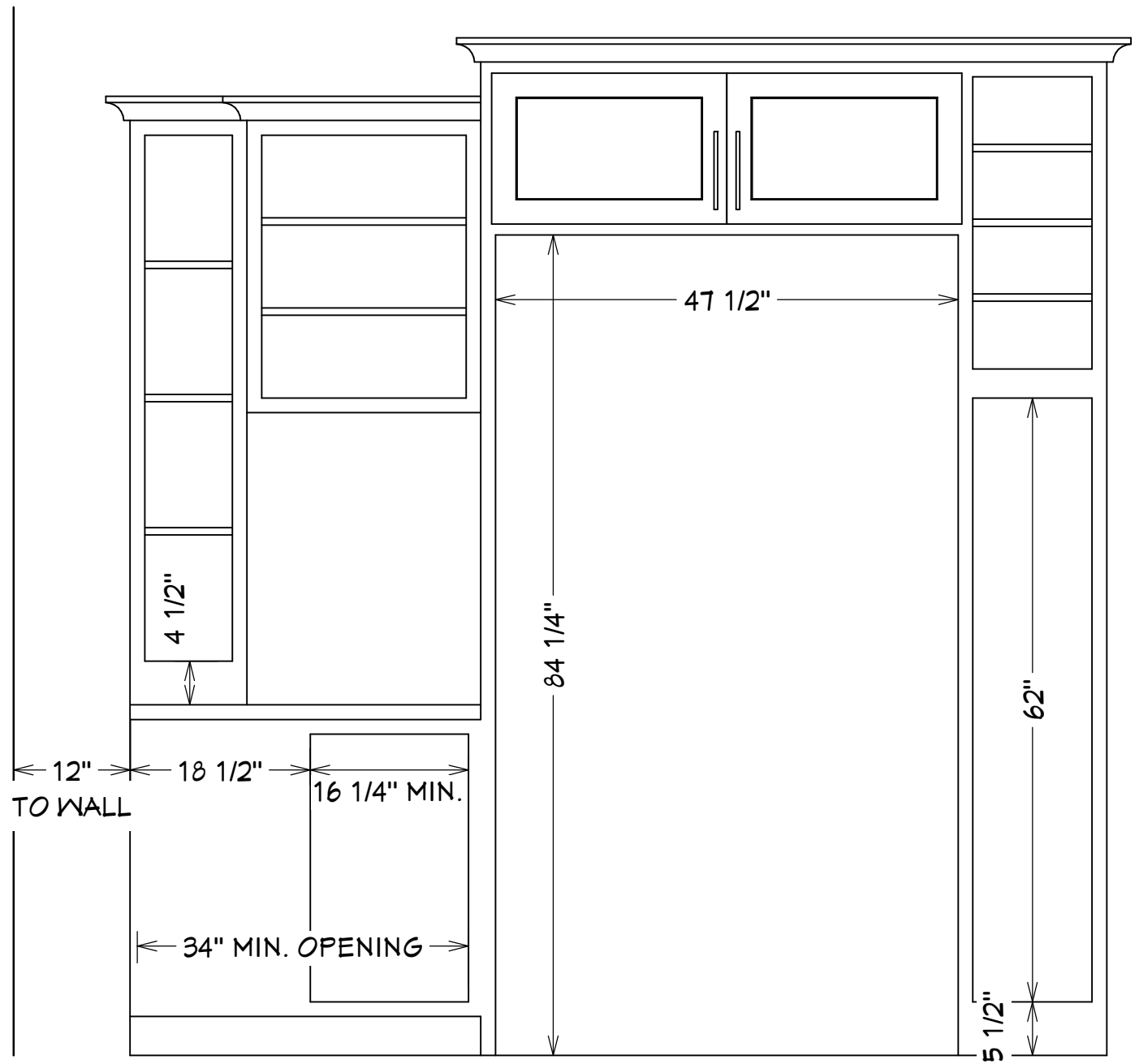
Details 3 and 4

Blind corner hardware:
Rev-A-Shelf® model #5PSP-18-CR



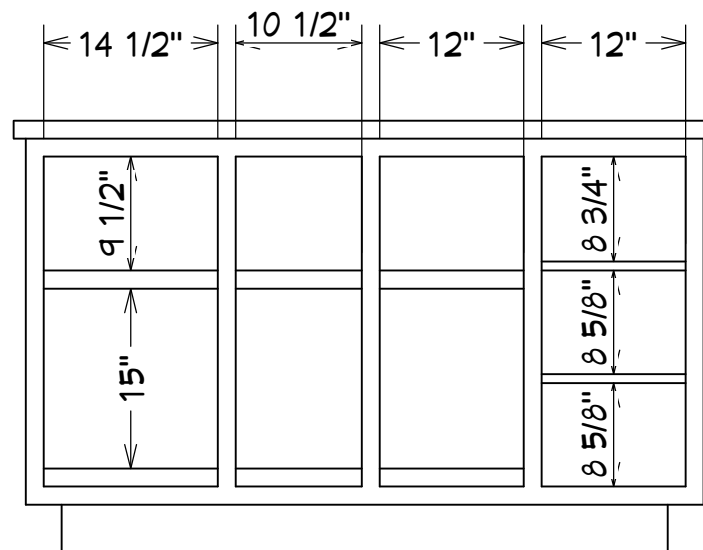
Details 5 and 6

Blind corner hardware:
Rev-A-Shelf® model #5207-CR

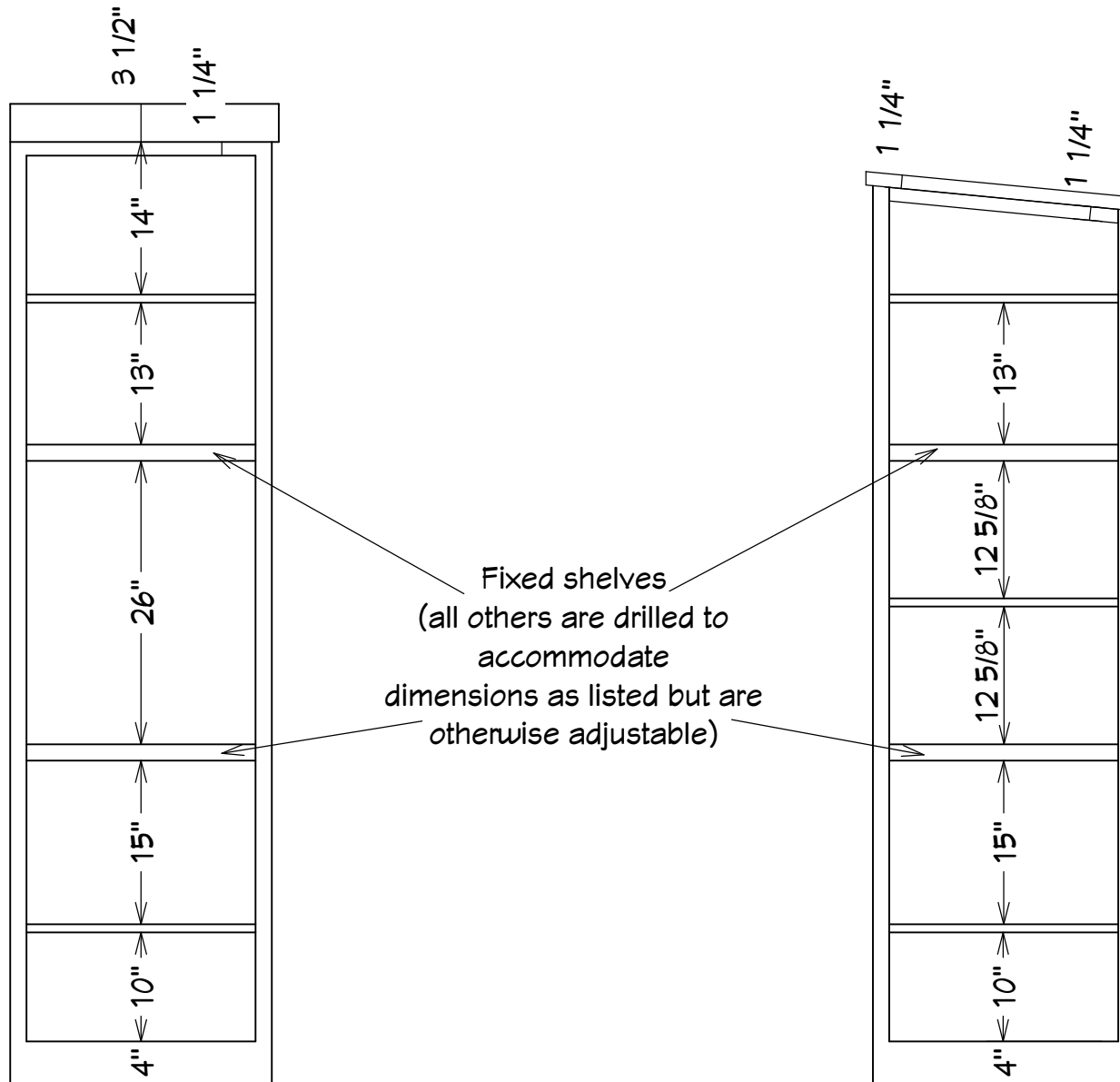


Details 7, 8, and 9

Please note:
 Spacing of stainless steel shelving
 based on 1-1/2" thick shelving and
 may vary slightly depending on finished
 shelf thickness (to be decided).



Detail 10



Details 11 and 12