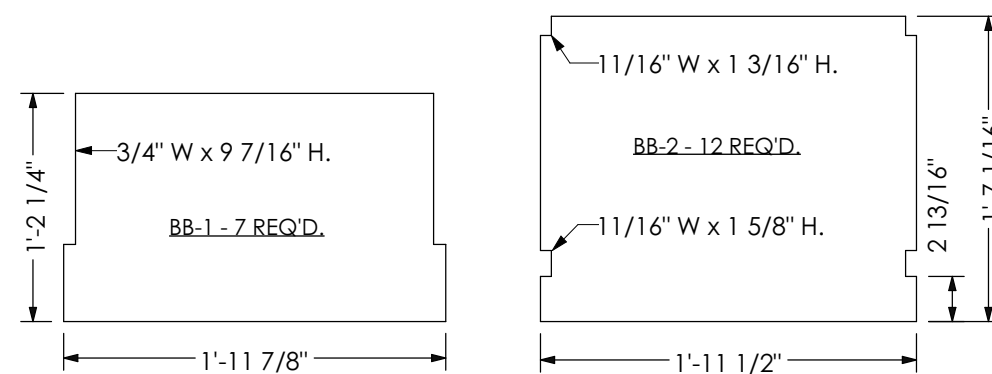
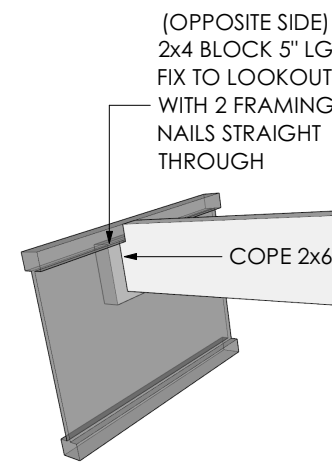


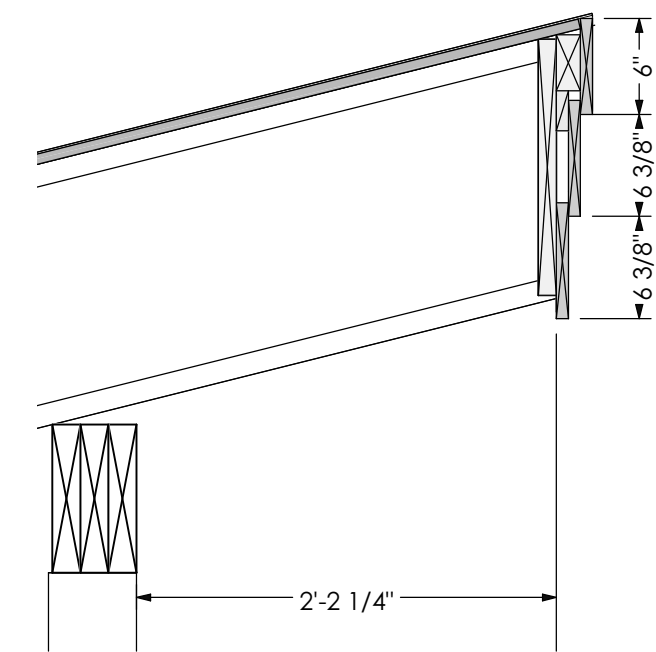
S2
10 LOW ROOF EDGE SECTION
1 in = 1 ft



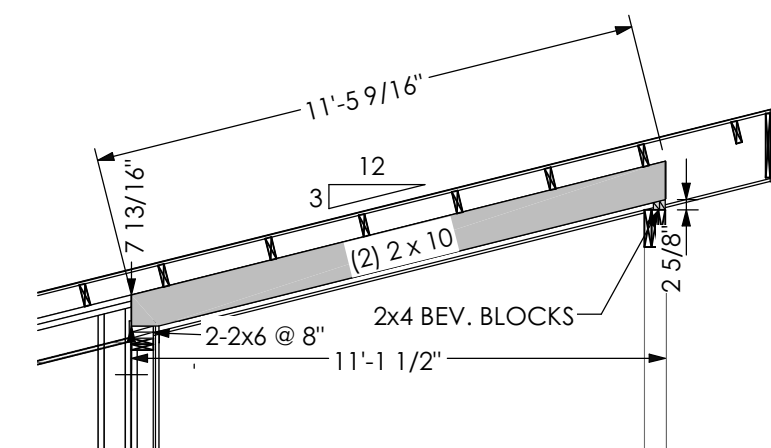
CLOSURE PANEL DETAILS FOR FRONT SIDE WALLS



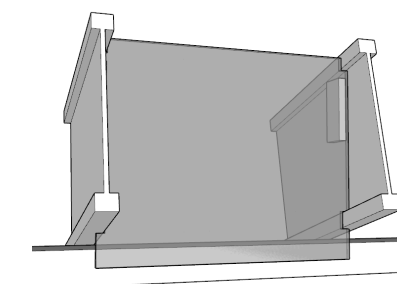
CONNECTION AT LOOKOUT
TO I-JOIST RAFTER



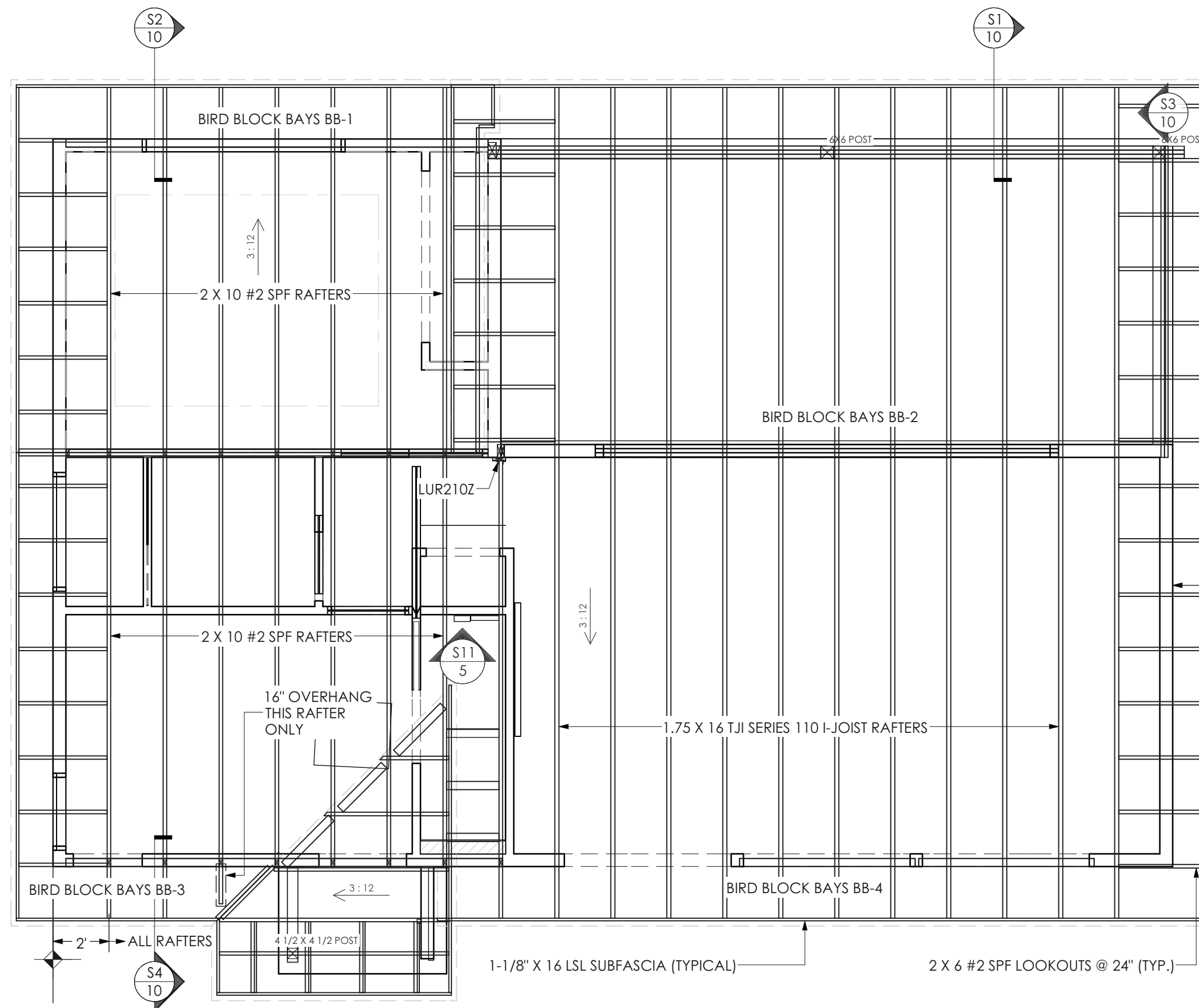
S1
10 HIGH ROOF EDGE SECTION
1 in = 1 ft



S3
10 LOOKOUT RAFTER BEAM
1/4 in = 1 ft

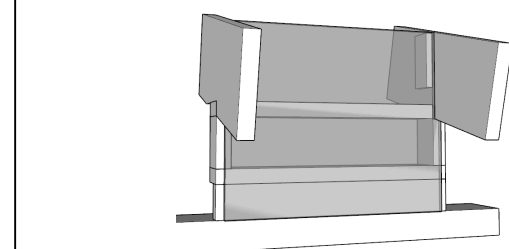


CLOSURE PANEL BB-2 AT FRONT PORCH WALL

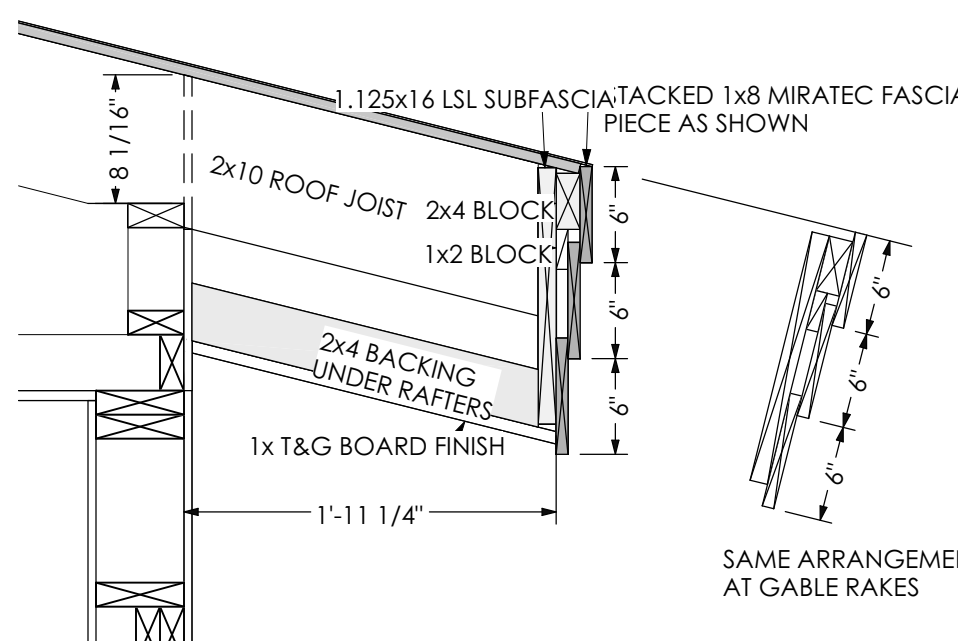


RAFTER BAY CLOSURE PANEL ("BIRD BLOCK") NOTES:

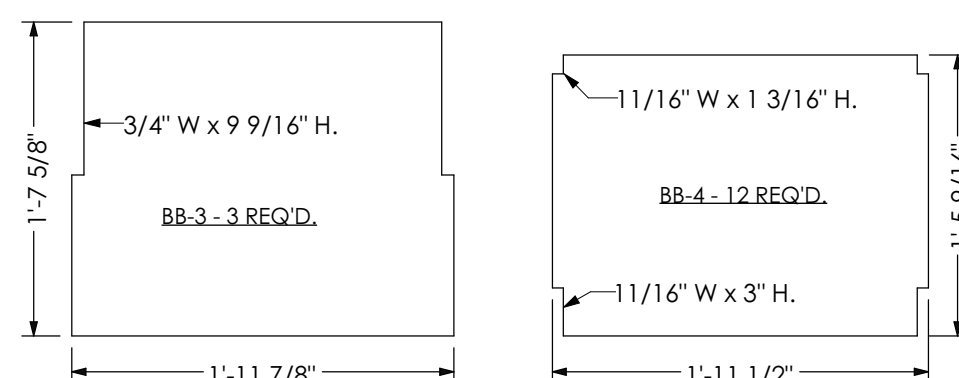
1. MAKE FROM 1/2" ZIPWALL
2. CUT 6" LENGTHS OF 1x FURRING STRIP FOR BACKING
3. LAY OUT RAFTERS FOR BACKING AND ATTACH BEFORE RAFTERS ARE INSTALLED
4. ATTACH BACKING TO RAFTERS WITH 2" STAPLES
5. ATTACH TO I-JOISTS STAPLING BOTH SIDES AT ONCE
6. PRECUT ALL CLOSURES BB-1 THROUGH BB-4 BEFORE RAFTER INSTALLATION
7. STAPLE ON CLOSURES RIGHT AFTER RAFTERS ARE STACKED
8. MODIFY AS NEEDED FOR ENDWALL BAYS



CLOSURE PANEL BB-3 AT BUNK ROOM WALL



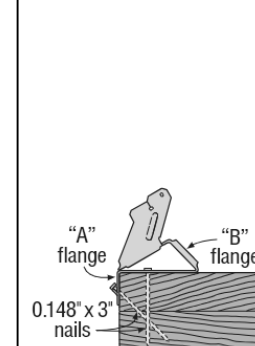
S4
10 LOW ROOF EDGE SECTION
1 in = 1 ft



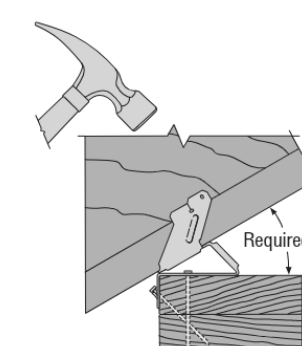
CLOSURE PANEL DETAILS FOR REAR SIDE WALLS

ROOF & FRAMING PLAN
1/4"=1'

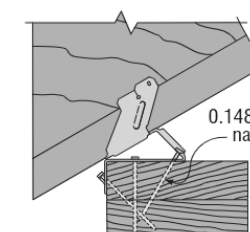
EACH I-JOIST RAFTER REQUIRES 3 SIMPSON VPA26 VARIABLE PITCH RAFTER CONNECTORS, ONE AT EACH BEARING POINT



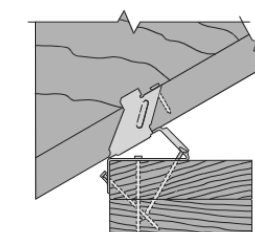
Step 1
Install top nails and face PAN nails in "A" flange to outside wall top plate.



Step 2
Seat rafter with a hammer, adjusting "B" flange to the required pitch.



Step 3
Install "B" flange nails in the around nail holes, locking the pitch.



Step 4
Bend tab with hammer and install 0.148" x 1 1/2" nail into tab nail hole. Hammer nail in at an approximate 45° angle to limit splitting.

SHEET NUMBER

10

SCALE @ 24" X 36"

DATE:

DRAWN BY:

ROOF & FRAMING
PLAN

CAMP AT THE
DOCK

DESIGN BY:

GENE DAVIS
451 JAY MTN. RD.
JAY, NY 12941
518-524-3377