

ISSUE WITH CHIEF ARCHITECT X13

Date: Tuesday, 01.10.23

To: Chief Tech Support
Re: Unique issues with Software

Computer setup:

Processor Intel(R) Core(TM) i7-4770 CPU @ 3.40GHz 3.40 GHz
Installed RAM 32.0 GB
Device ID 34B12F41-8A74-4678-A125-C67F90EA7678
Product ID 00330-80000-00000-AA650
System type 64-bit operating system, x64-based processor
Video Card: Nvidia Geforce GTX Titanium

Edition Windows 10 Pro
Version 21H2
Installed on 8/31/2020
OS build 19044.2364
Experience Windows Feature Experience Pack 120.2212.4190.0

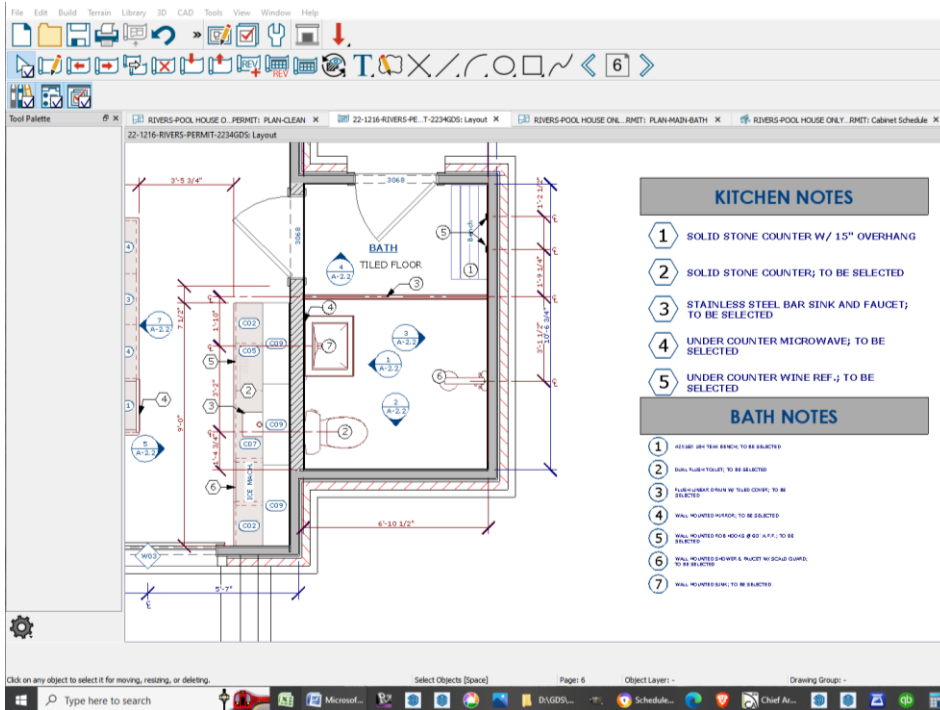
The following issues have been discovered with my installation of Chief Architect x13

1. **Labels in Custom note schedules are not scaling correctly in layout.**
2. **There aren't any support videos that I can find that addresses the correct procedure for avoiding this issue.**
3. **See Screen shots below**

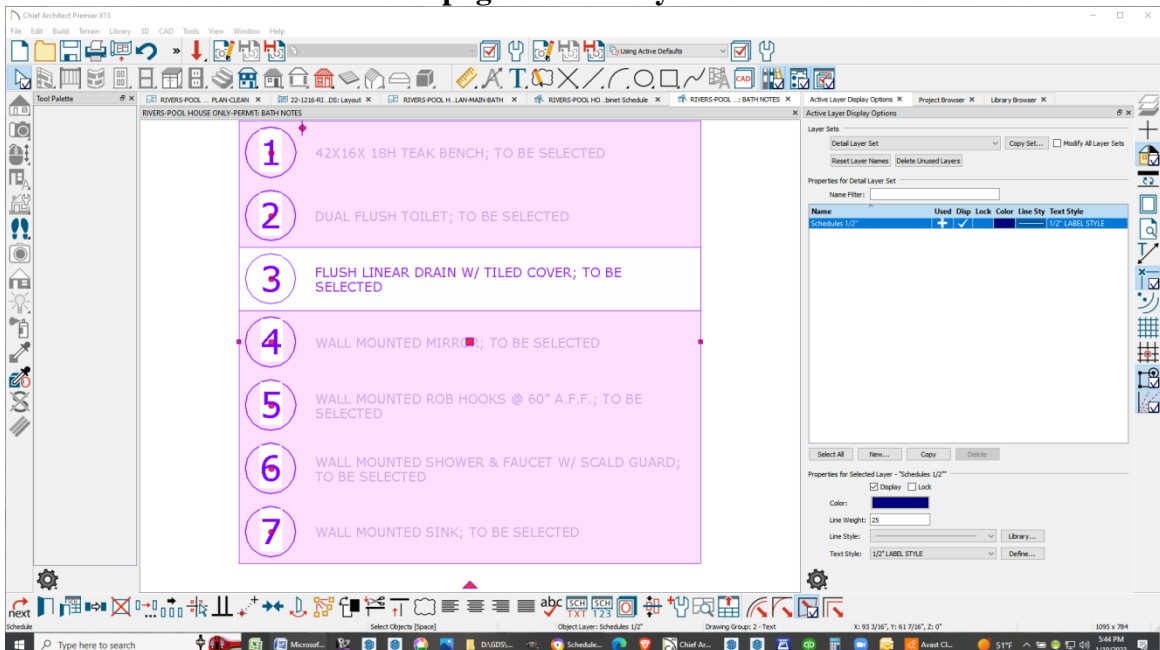
Thank you for any assistance in resolving this issue.

Steve Gravatte, AIA

- A. Notes on Plan are set to layer with 1/2" Scale text, and are showing at correct size on plan
- B. Drawing is linked at 1/2" scale;
- C. All schedules are linked at 1/2" scale



- D. Schedules in CAD Detail page is set on layer with 1/2" Scale Text



E. Schedule Labels are set to calculate size from text (which is set to 1/2" Scale text layer)

