

[More](#)[Activity ▾](#)[Browse ▾](#)[Home](#) > [Search](#)[Unread Content](#)[Mark site read](#)

Search the Community

Showing results for 'jamb switch'.

[Search Again](#)

Didn't find what you were looking for? Try searching for:

The phrase "jamb switch" jamb AND switch AND

Newest results first jamb switch in content titles only

+ More search options

Found 1557 results

[1](#)[2](#)[3](#)[4](#)[5](#)[6](#)[NEXT](#)[»](#)[Page 1 of 63 ▾](#)[SORT BY ▾](#)

Jamb Switch



Boogdaddy posted a topic in General Q & A

I'm not sure what is meant by the "Automatic Door **Switch**" symbol in CA's Library. Does Automatic Door **Switch** = **Jamb Switch** ? I am trying to figure out how to place a **jamb switch** , such as would be placed on the hinge side of a door to a storage

closet or pantry and turns on the light inside when the...

🕒 20 hours ago 💬 5 replies



● Inverse layer hider tool



AvoyeDesign replied to AvoyeDesign's topic in Suggestions

...I **switch** to "all on" if I am looking for something that is lost among my layers and might be easier to find if I show everything. I **switch** to "all off" if I need to isolate a single layer, then I find and turn on that layer. The tool I suggest would make this a lot simpler to do, and if it is te...

🕒 1 hour ago 💬 18 replies



● Inverse layer hider tool



Alaskan_Son replied to AvoyeDesign's topic in Suggestions

... **switch** to All Off Set, check Display. When you're done, select all, uncheck Display, and return to your previous layer set. For these and other temporary changes to our layer sets, I think a much more robust solution would be this....

🕒 31 minutes ago 💬 18 replies



★ Jamb Switch



Boogdaddy replied to Boogdaddy's topic in General Q & A

...I'm not finding that particular door light **switch** in my Library no matter what combination of wording I use. That's definitely the type of **jamb switch** I'm wanting-with the centered actuator. Did you download a manufacturer or bonus catalog that had it?

🕒 18 hours ago 💬 5 replies

★ Jamb Switch





Kbird1 replied to Boogdaddy's topic in General Q & A

...MHD_Door **Jamb Switch** .calibz

🕒 18 hours ago 💬 5 replies



★ **Jamb Switch**



Kbird1 replied to Boogdaddy's topic in General Q & A

It's the Door **switch** you need apparently , though it doesn't really match the RW **Jamb switches** I've used....

🕒 18 hours ago 💬 5 replies



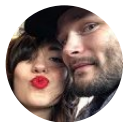
● **Casing recessed to Main Layer?**



Larry_Sweeney replied to Larry_Sweeney's topic in General Q & A

...I played with changing the **jamb** to 3 1/2" but the casing does not come into the studs like I want them to. "Inset box" just offsets the **jamb** location while the casings remain on the outside of the plaster. Am I missing some other setting? The cad detail in the attachment shows how I accomplish the...

🕒 April 19 💬 5 replies



● **Casing recessed to Main Layer?**



Renerabbitt replied to Larry_Sweeney's topic in General Q & A

...this option is in your Door Specifications- **Jamb** /Has **Jamb** /Inset Question regarding the detail you are showing as an example. what are you end nailing your wallboard/RC channel/lathe etc. to if not the king/trimmer?

🕒 April 19 💬 5 replies



● Inverse layer hider tool



Alaskan_Son replied to AvoyeDesign's topic in Suggestions

... **Switch** to the All Off Layer Set. Your object's should still be selected and your layers should still be filtered. 3. Check "Display". This should turn on the display of only those selected layers. When you're finished simply Select All and turn layers back off by unchecking "Dis...

🕒 Friday at 12:22 PM

💬 18 replies



1



● Inverse layer hider tool



Alaskan_Son replied to AvoyeDesign's topic in Suggestions

... **switch** to All Off set, and check display. I know, I know, you probably already know that and you're not looking for workarounds, but it only takes a couple seconds and other people might not know.

🕒 Thursday at 07:21 PM

💬 18 replies



1



● Give us all edit handles after clicking Copy/Paste



Alaskan_Son posted a topic in Suggestions

...but needing to click again and having to **switch** habits when a single tool could do the job seems silly. As it works right now, once we click Copy/Paste, we lose all edit handles except for Move and Rotate. Not sure why we need to have that limitation. The one item that gives us a lit...

🕒 March 30

💬 6 replies



2



● Extend New Saved Plan View "Save Options" functionality to Layer Sets



Alaskan_Son replied to Alaskan_Son's topic in Suggestions

... **switch** floor, etc.) and then try to change Plan Views or close the plan, we are issued the prompt "The Saved Plan View....has been modified...Would you like to save the current settings?" Always Save: With this option, if we make any changes and then try to change the Plan View or clos...

🕒 April 7 💬 18 replies



● Framing

joeey_martin replied to joeey_martin's topic in Suggestions

...so I have to **switch** back and forth to move it as needed As stated above, doesn't play well with I-joists.

🕒 April 19 💬 9 replies



● Floating third floor

grubba replied to grubba's topic in General Q & A

It happens when I **switch** from the default walls created when I create the new floor to a "Pony Wall" and change the upper side to railing. I'm obviously missing something (sorry for the barrage of images): Create 3rd floor: Change wall type to Pony Wall (It defau...

🕒 April 19 💬 14 replies



● Extending Door Jamb /Window Sill Beyond Main Layer

myrtsbnye posted a topic in General Q & A

My exterior walls typically are 2"x6" stud, sheathing with 2" rigid insulation and 1"x3" strapping then wood siding. The 2"x6" stud wall is on the main layer and everything else I've listed are on the exterior layer. This way when I build the foundation the concrete wall lines up with the 2"x6" wall...



● Can I have two different room "versions" and switch between them?

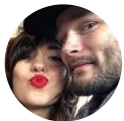


SilverAstronauts posted a topic in General Q & A

...so I was wondering if there was a way that I could save different versions of a room and **switch** between them? Not just different materials, but actual different layouts. Sure, I could create a new save file... but... there's gotta be a better way right? EDIT: On X11 that i...

🕒 January 24

💬 22 replies



Layer Hider Improvements



Renerabbitt replied to ACADUser's topic in Suggestions

...Once my lighting layout is complete I can **switch** to my electrical layerset and see that furniture is turned off again etc. Those working layer sets are separate from my draft layer sets which NEVER get touched. Draft layers are used to send plan views to layout and THAT'S ALL. Cater your...

🕒 April 4

💬 18 replies



● Electrical Symbol Size



HDbyJustin posted a topic in General Q & A

...I am learning a lot in Chief Premier x12 and I am amazed I didn't make this **switch** sooner. I have a question regarding resizing the 2d symbols for electrical plan. They seem small but I am not 100% sure how to adjust it.

🕒 April 12

💬 9 replies

• symbol

• resize



● Electrical Symbol Size



Dermot replied to HDbyJustin's topic in General Q & A

... **switch** or light), then you should open the Electrical Defaults dialog and assign it as one of the appropriate defaults. More information about all of this can be found in the manual and training videos.

🕒 April 13

💬 9 replies



2

• symbol

• resize



● Electrical Symbol Size



solver replied to HDbyJustin's topic in General Q & A

...Are you asking about the symbol for a **switch**, for example?

🕒 April 12

💬 9 replies

• symbol

• resize



● roofs



solver replied to decorators3's topic in General Q & A

... **Switch** to the All Off layer set, turn on roof and walls, use Edit Area (All Floors) Visible to copy, then paste into a new plan.

🕒 April 12

💬 22 replies

• auto



● Chief and Mac??



Designer1 posted a topic in General Q & A

...He loves everything apple and has been convincing me to **switch** from my alienware and I wont budge. Chief works fine with my pc and have always been a pc vs mac person. My family have bought me two apple iphones and now Im starting to grow on liking Apple. Now my friend said that's it hes going...

🕒 February 26

💬 22 replies



Dimensions not adding up.

Alaskan_Son replied to mpatalsky's topic in General Q & A

...I oftentimes **switch** my Number Style to decimal inches so that I can better see the actual dimensions.

🕒 April 11 💬 10 replies



Changing Cabinet Labels

Dezigner99 posted a topic in General Q & A

I'm a kitchen and bath designer - I'm making the **switch** from 2020 to Chief Architect. So far I love it. No crashes - which was commonplace with 2020. I can design professional presentation drawings that are architectural quality - something that was really difficult in 2020. So far my stress le...

🕒 March 31 💬 5 replies



● Motion Detector Interior Light

robdyck replied to mtldesigns's topic in General Q & A

...or a light **switch** with optional motion sensor? I recommend the **switch** because it can toggle off the motion sensor if desired. To your question...I'd make a symbol and it'll show up in the legend. I'd add "MS" to either symbol. Chief has one...Occupancy Sensor.

🕒 March 30 💬 3 replies

1

2

3

4

5

6

NEXT

»

Page 1 of 63 ▾