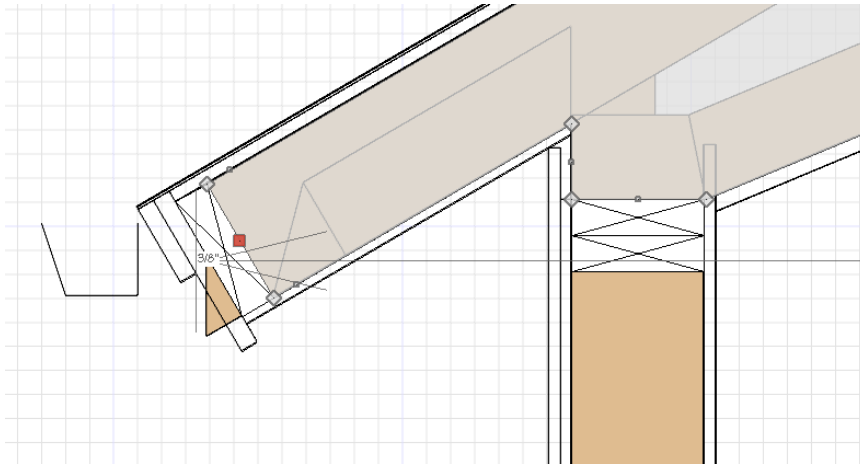


Question : how to Edit Trusses Properly

Here is what opens up when I select the truss for editing, in a Section Camera, I cannot edit the truss envelope in the truss detail. I can only edit it in a clipped section view.

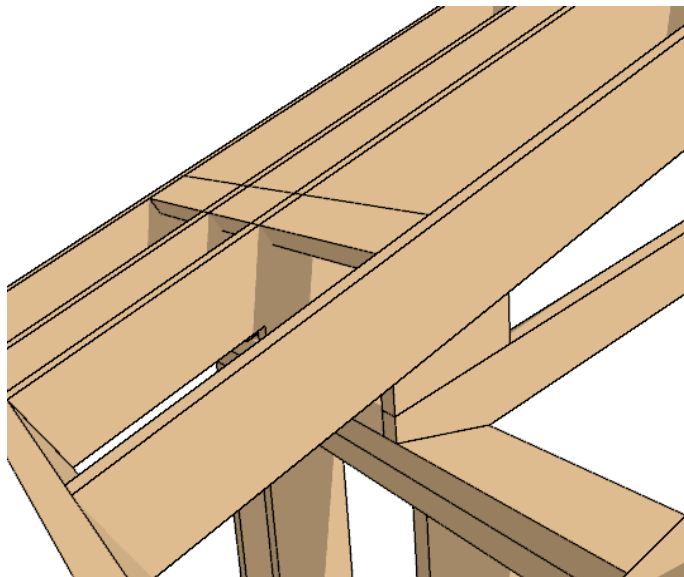


The truss envelope (above) can only be edited in a section view camera.

Answer :

If accuracy is what you're looking for, edit the individual **truss members** (chords, webbing etc) in the **TRUSS DETAIL**.

The polyline truss envelope is not editable in the truss detail, only in a Section camera, this will let you reshape a Truss as needed but Chief will frame it automatically. To change the shape, Length etc, of a Truss Member, Edit the truss member individually in the truss detail but 1st remember to unlock the Framing, Roof Trusses Layer, so you can select the individual Members.



***Note the New Shape / Member above