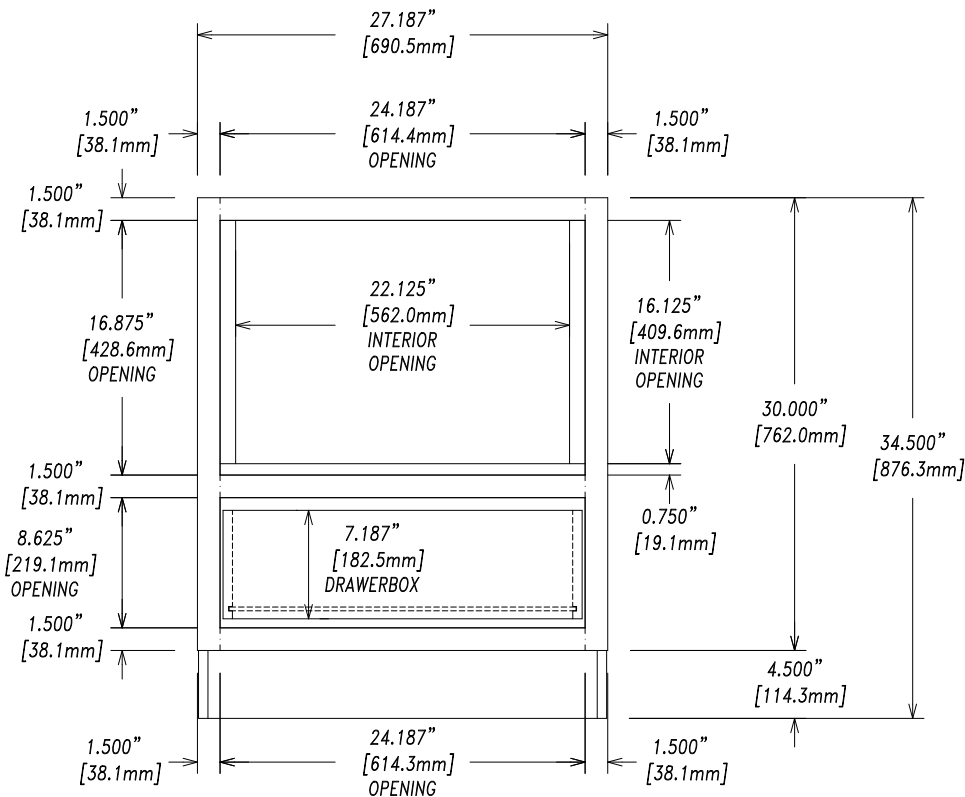
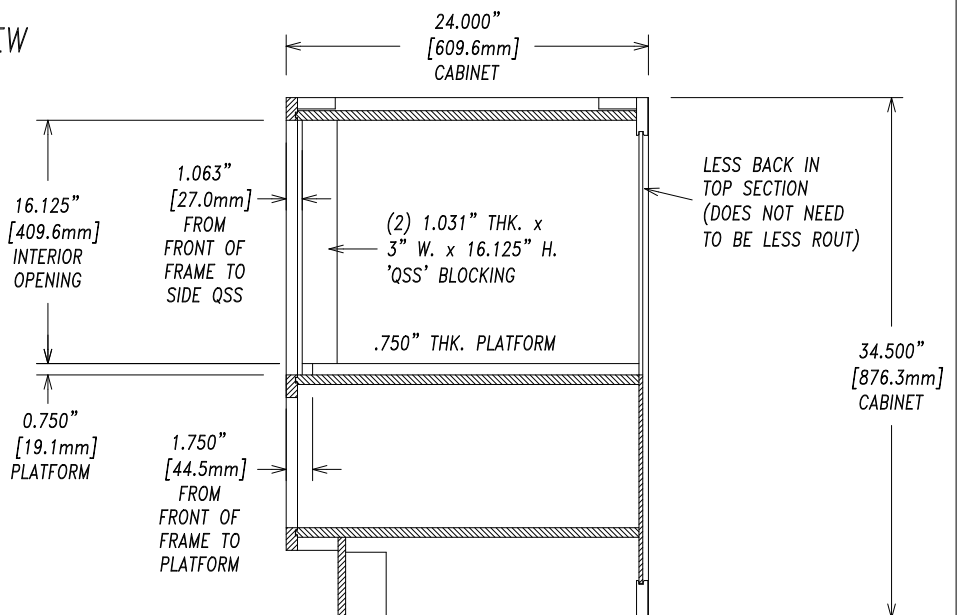


NOTES: CABINET TO HAVE CUTOUT W/
FLUSH INSET APPLICATION.
'QSS' BLOCKING, FIXED FLOOR,
& PLATFORM ALL TO BE FINISHED.
27.188" WIDE CABINET.

CARR
BH-2
AA-12505
8
BMW B 2834 (LF)
JWS
12-21-18
MS
PASE



FRONT VIEW



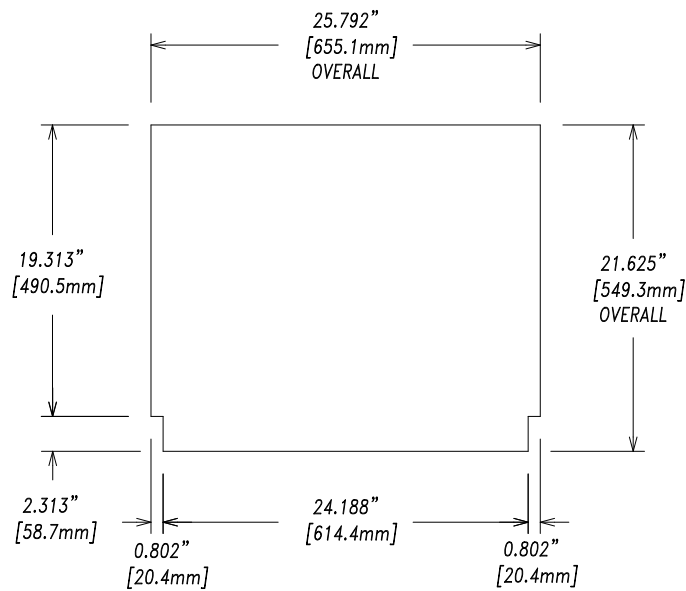
RIGHT SIDE SECTION VIEW

Drawn By: Joe Straub

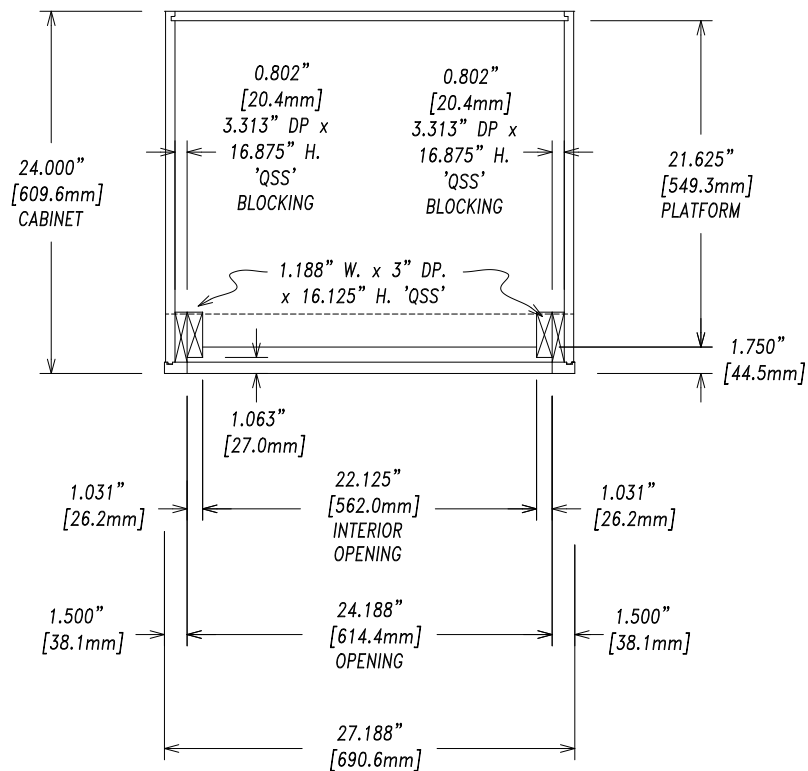
Checked By:

Rev.:

CARR
BH-2
AA-12505
8
BMW B 2834 (LF)
JWS
12-21-18
MS
PASE



PLATFORM DETAIL
(0.750" THICK)



TOP SECTION VIEW

Drawn By: Joe Straub

Checked By:

Rev.: