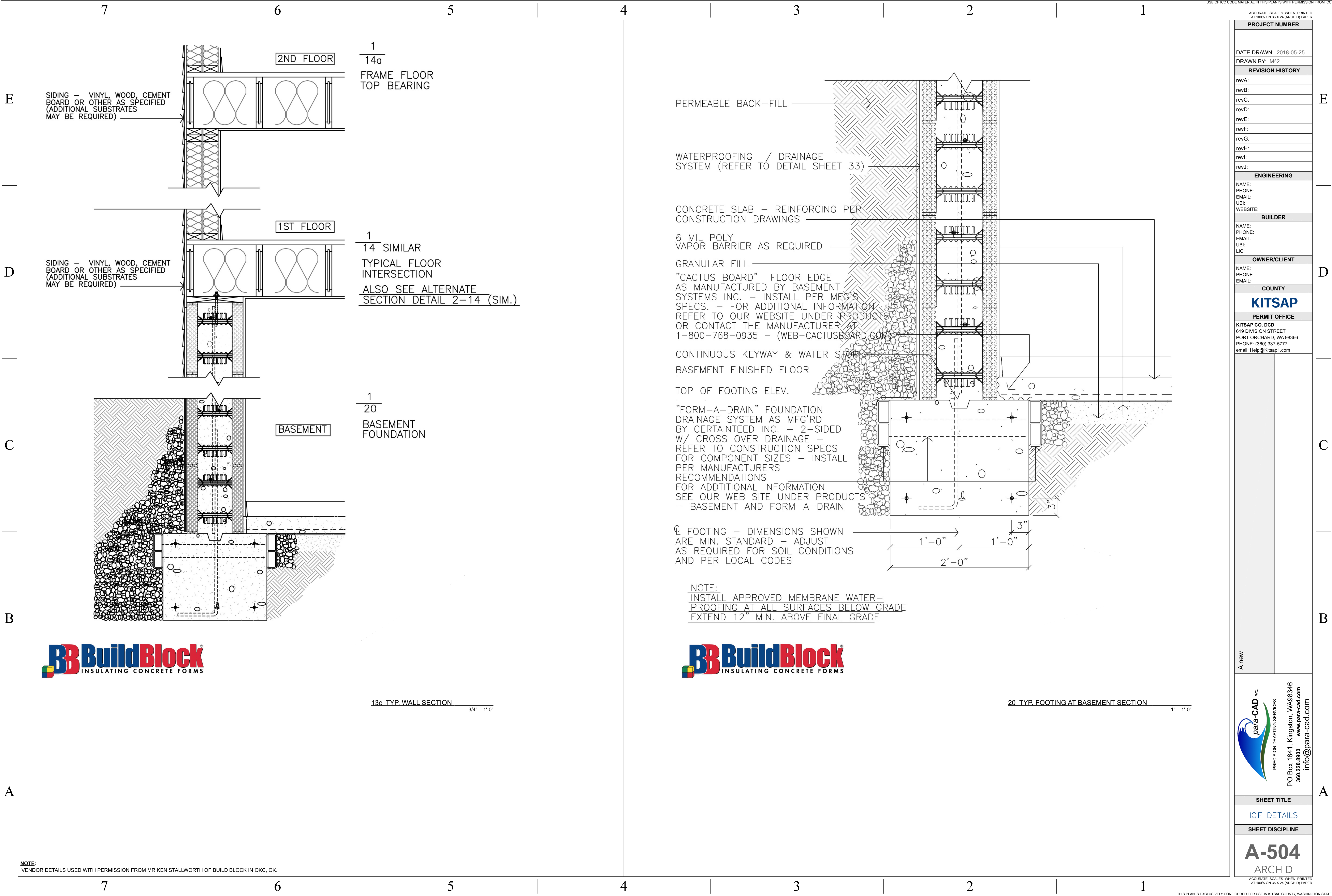


USE OF ICC CODE MATERIAL IN THIS PLAN IS WITH PERMISSION FROM ICC.	
ACCURATE SCALES WHEN PRINTED AT 100% ON 36 X 24 (ARCH D) PAPER	
PROJECT NUMBER	
DATE DRAWN: 2018-05-25	
DRAWN BY: M²	
REVISION HISTORY	
revA:	
revB:	
revC:	
revD:	
revE:	
revF:	
revG:	
revH:	
revI:	
revJ:	
ENGINEERING	
NAME:	
PHONE:	
EMAIL:	
UBI:	
WEBSITE:	
BUILDER	
NAME:	
PHONE:	
EMAIL:	
LIC:	
OWNER/CLIENT	
NAME:	
PHONE:	
EMAIL:	
COUNTY	
KITSAP	
PERMIT OFFICE	
KITSAP CO. DCD 619 DIVISION STREET PORT ORCHARD, WA 98366 PHONE: (360) 337-5777 email: Help@Kitsap1.com	
project for:	
para-CAD INC. PRECISION DRAFTING SERVICES PO Box 1841, Kingston, WA 98346 360.220.8900 www.para-cad.com info@para-cad.com	
SHEET TITLE	
MISC. DETAILS	
SHEET DISCIPLINE	
A-502 ARCH D	
ACCURATE SCALES WHEN PRINTED AT 100% ON 36 X 24 (ARCH D) PAPER	
THIS PLAN IS EXCLUSIVELY CONFIGURED FOR USE IN KITSAP COUNTY, WASHINGTON STATE	









**NOTE:**  
VENDOR DETAILS USED WITH PERMISSION FROM MR KEN STALLWORTH OF BUILD BLOCK IN OKC. OK



**para-CAD** inc.  
PRECISION DRAFTING SERVICES

PO Box 1841, Kingston, WA 98346  
360.220.8900 [www.para-cad.com](http://www.para-cad.com)  
[info@para-cad.com](mailto:info@para-cad.com)

SHEET TITLE

## ICF DETAILS

## SHEET DISCIPLINE

**A-505**  
ARCH D





<b>SHEET TITLE</b>
ICF DETAILS
<b>SHEET DISCIPLINE</b>
<b>A-506</b> ARCH D ACCURATE SCALES WHEN PRINTED AT 100% ON 36 X 24 (ARCH D) PAPER



## PROJECT NUMBER

DATE DRAWN: 2018-05-25

DRAWN BY: M<sup>2</sup>

## REVISION HISTORY

revA:

revB:

revC:

revD:

revE:

revF:

revG:

revH:

revI:

revJ:

## ENGINEERING

NAME:

PHONE:

EMAIL:

UBI:

WEBSITE:

## BUILDER

NAME:

PHONE:

EMAIL:

LIC:

## OWNER/CLIENT

NAME:

PHONE:

EMAIL:

## COUNTY

## KITSAP

## PERMIT OFFICE

KITSAP CO. DCD  
619 DIVISION STREET  
PORT ORCHARD, WA 98366  
PHONE: (360) 337-5777  
email: Help@Kitsap1.com

## SHEET TITLE

2015 IRC

## SHEET DISCIPLINE

**A-604**  
ARCH D  
ACCURATE SCALES WHEN PRINTED  
AT 100% ON 36 X 24 (ARCH D) PAPER

7

6

5

4

3

2

1

TABLE R602.10.4.1  
CONTINUOUS SHEATHING METHODS

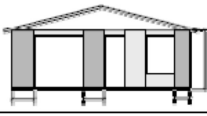
METHOD	MATERIAL	MINIMUM THICKNESS	FIGURE	CONNECTION CRITERIA
CS-WSP	Wood structural panel	3/8"		6d common (2"x0.113") nails at 6" spacing (panel edges) and at 12" spacing (intermediate supports) or 16 ga. x 1-3/4 staples at 3" spacing (panel edges) and 6" spacing (intermediate supports)

TABLE R602.10.4.2  
LENGTH REQUIREMENTS FOR BRACED WALL PANELS  
WITH CONTINUOUS SHEATHING \*

METHOD	ADJACENT CLEAR OPENING HEIGHT	WALL HEIGHT		
		8'	9'	10'
CS-WSP	64"	24"	27"	30"
	68"	26"	27"	30"
	72"	28"	27"	30"
	76"	29"	30"	30"
	80"	31"	33"	30"
	84"	35"	36"	33"
	88"	39"	39"	36"
	92"	44"	42"	39"
	96"	48"	45"	42"
	100"		48"	45"
	104"		51"	48"
	108"		54"	51"
	112"			54"
	116"			57"
	120"			60"

TABLE R602.10.5(2)  
MINIMUM LENGTH REQUIREMENTS FOR BRACED WALL PANELS  
IN A CONTINUOUSLY-SHEATHED WALL \*

MINIMUM LENGTH OF BRACED WALL PANEL (inches)		MINIMUM OPENING CLEAR HEIGHT NEXT TO THE BRACED WALL PANEL (% of wall height)
8-foot wall	10-foot wall	
48	60	100%
32	40	85%
24	30	67%

## R602.10.7 ENDS OF BRACED WALL LINES WITH CONTINUOUS SHEATHING.

EACH END OF A BRACED WALL LINE WITH CONTINUOUS SHEATHING SHALL HAVE ONE OF THE CONDITIONS SHOWN IN FIGURE R602.10.7 SHOWN BELOW.

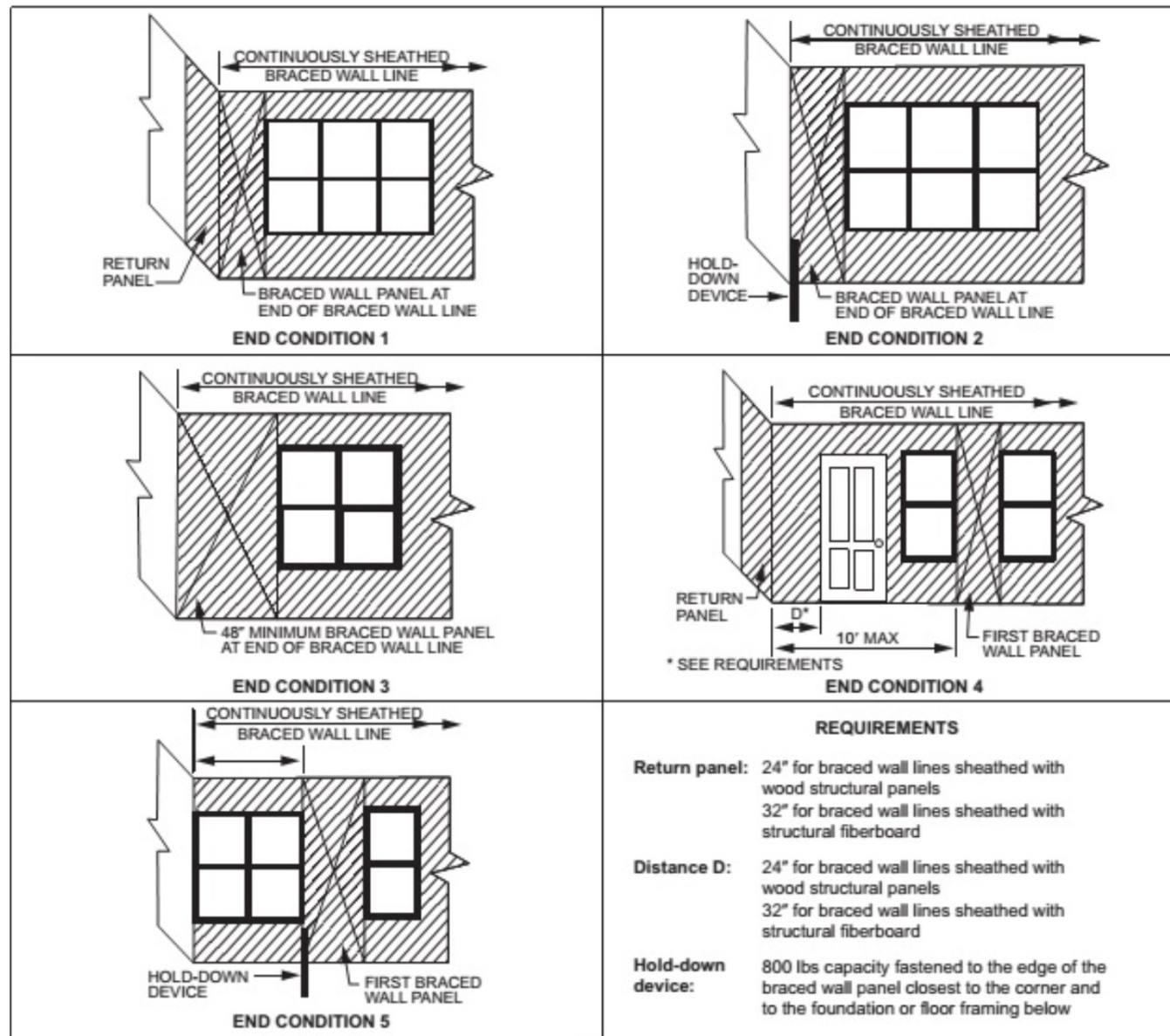


FIGURE R602.10.7

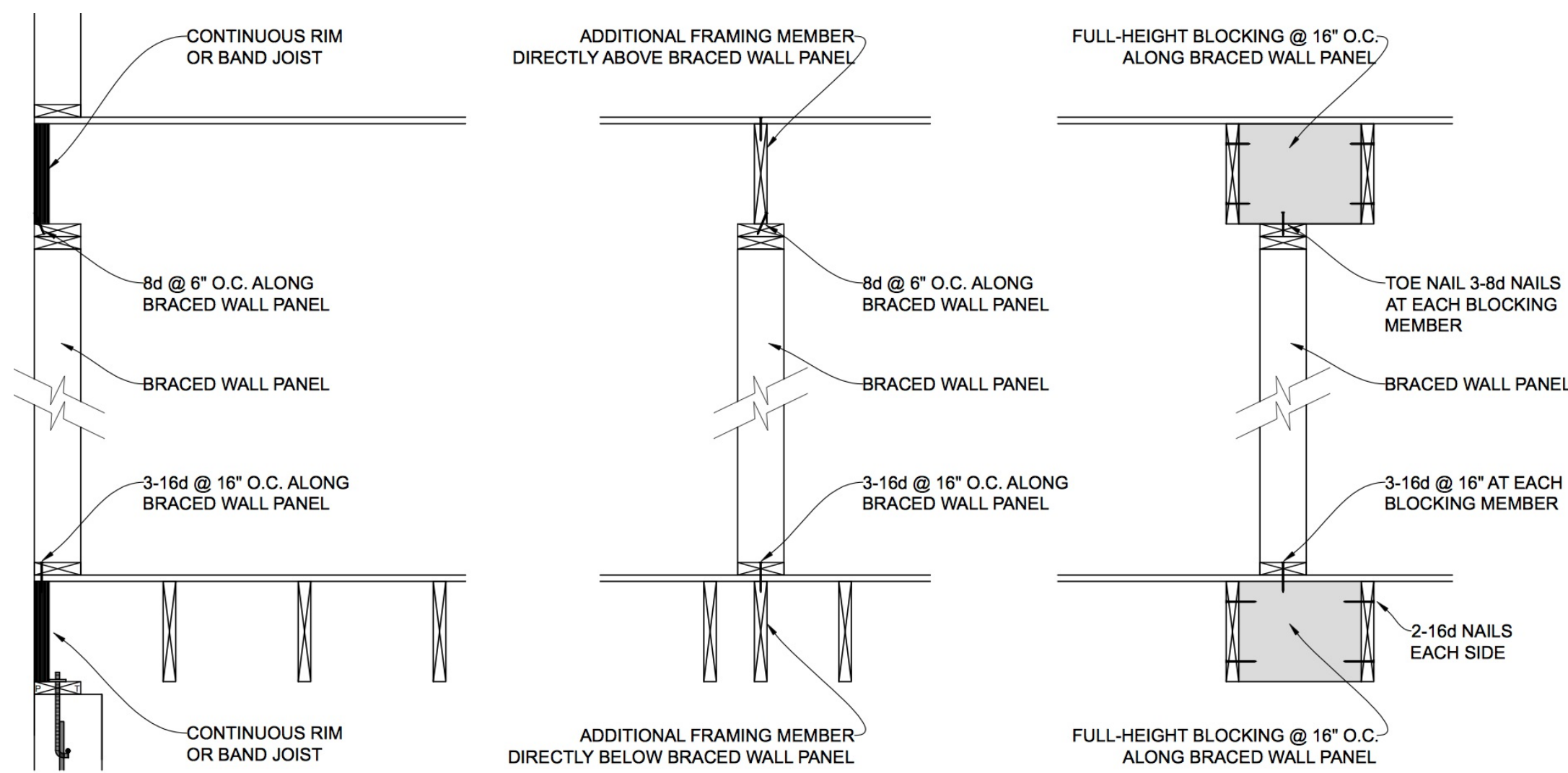
END CONDITIONS FOR BRACED WALL LINES WITH CONTINUOUS SHEATHING

TABLE R602.10.1.3  
BRACED WALL LINE SPACING

APPLICATION	CONDITION	BUILDING TYPE	BRACED WALL LINE SPACING CRITERIA	
			Maximum Spacing	Exception to Maximum Spacing
Wind bracing	Ultimate design wind speed 100 mph to < 140 mph	Detached, townhouse	60 feet	None
Seismic bracing	SDC A - C	Detached	Use wind bracing	
	SDC A - B	Townhouse	Use wind bracing	
	SDCC	Townhouse	35 feet	Up to 50 feet when length of required bracing per Table R602.10.3(3) is adjusted in accordance with Table R602.10.3(4).
	SDC D <sub>0</sub> , D <sub>1</sub> , D <sub>2</sub>	Detached, townhouses, one- and two-story only	25 feet	Up to 35 feet to allow for a single room not to exceed 900 square feet. Spacing of all other braced wall lines shall not exceed 25 feet.
	SDC D <sub>0</sub> , D <sub>1</sub> , D <sub>2</sub>	Detached, townhouse	25 feet	Up to 35 feet when length of required bracing per Table R602.10.3(3) is adjusted in accordance with Table R602.10.3(4).

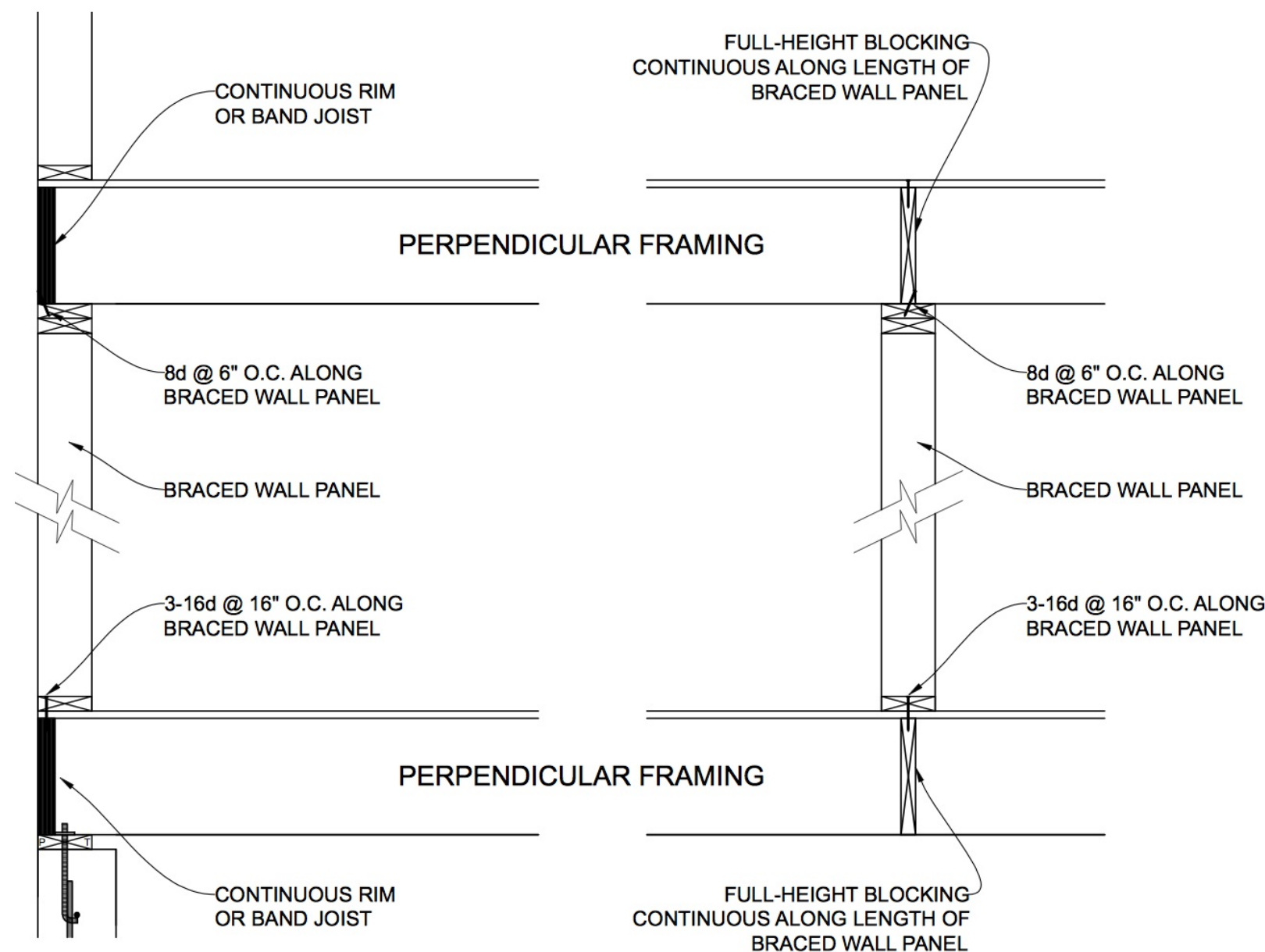
## BRACING NOTES:

- PREScriptive WALL BRACING AMOUNTS PER THE 2015 IRC W/ WASHINGTON AMENDMENTS ASSUMING SDC D2, EXPOSURE CATEGORY B, MAX WIND SPEEDS OF < OR = 110 MPH ULTIMATE.
- EXTERIOR WALLS ARE BRACED PER METHOD **CS-WSP** (CONTINUOUS SHEATHING). EXTERIOR CORNERS ARE TO BE CONSTRUCTED PER FIGURE FIGURE R602.10.7 IRC. SEE DETAIL ON 'D' SHEETS.
- BRACED PANEL SYMBOLS SHOWN ON THE PLANS REFLECT MINIMUM BRACING AMOUNTS REQUIRED PER CODE. THE BRACING TABLE ON THE FRAMING PLAN SHOWS THE ACTUAL AMOUNT BRACED (AT CONTINUOUSLY SHEATHED WALL LINES).
- BRACED WALL LINES SHALL BE SPACED A MAX. OF 25' IN SDC D AREAS. A SPACING OF >25' UP TO 35' IS PERMITTED PER THE EXCEPTIONS TO ORSC R602.10.1.5 OR IRC TABLE R602.10.1.3:
  - IN ONE AND TWO STORY BUILDINGS SPACING BETWEEN TWO ADJACENT BRACED WALL LINES SHALL NOT EXCEED 35' ON CENTER TO ACCOMMODATE ONE SINGLE ROOM NOT EXCEEDING 900 SF IN AREA. SPACING BETWEEN OTHER BRACED WALL LINES SHALL NOT EXCEED 25'.
  - A SPACING UP TO 35' IS PERMITTED BETWEEN ADJACENT BRACED WALL LINES WHERE THE LENGTH OF THE BRACING REQUIRED IS MULTIPLIED BY THE APPROPRIATE ADJ FACTOR FROM TABLE R602.10.1.5, THE LENGTH TO WIDTH RATIO OF THE FLOOR/ROOF DIAPHRAGM DOES NOT EXCEED 3:1, AND THE TOP PLATE LAP SPLICE FACE NAILING IS (12) 16d NAILS ON EACH SIDE OF THE SPLICE.
- BRACED WALL PANELS THAT ARE PART OF A BRACED WALL LINE SHALL BE PERMITTED TO BE OFFSET FROM THE BRACED WALL LINE 4" ON EITHER SIDE. (ORSC R602.10.1.4 / IRC R602.10.1.2)
- BRACED WALL PANELS SHALL BE SPACED SO THAT THERE IS NOT MORE THAN 20' BETWEEN PANEL ENDS WITHIN A BRACED WALL LINE. PANELS CANNOT BE MORE THAN 25' OC. (ORSC R602.10.1.4 / IRC R602.10.2.2)
- BRACED WALL PANELS ARE ALLOWED TO BE 8' ORSC/ 10' IRC FROM BUILDING CORNERS AS LONG AS ONE OF THE FOLLOWING IS MET (ORSC R602.10.1.4.1 /IRC R602.10.2.2.1):
  - A MIN. 24" CORNER RETURN IS PROVIDED
  - AN 1800# HOLDOWN IS LOCATED AT THE END OF EACH BRACED WALL PANEL CLOSEST TO THE CORNER.
- INTERIOR BRACED WALL PANELS ARE PERMITTED TO START 10'-0" (IRC R602.10.2.2) / 12'-6" (ORSC R602.10.1.4) FROM THE END OF THE BRACED WALL LINE, IF THERE IS A QUALIFYING PANEL AT ONE END OF THE BRACED WALL LINE.
- BRACED WALL PANELS TO BE CONNECTED TO FRAMING AND/OR FOUNDATION PER ORSC R602.10.6, R602.10.6.1, R602.10.6.2 / IRC R602.10.8, R602.10.8.1, R602.10.8.2. PANEL SUPPORT PER ORSC R602.10.7, R602.10.7.1 / IRC R602.10.9. SEE DETAILS. 'D' SHEETS, FOR ADDITIONAL INFORMATION.
  - PROVIDE FULL DEPTH BLOCKING OR AN ADDITIONAL FLOOR MEMBER (BRACED WALL PARALLEL TO FLOOR FRAMING) TO SUPPORT BRACED WALL PANELS.
  - MAIN FLOOR BRACED WALL PANELS TO BE SUPPORTED ON CONTINUOUS FOOTINGS AT INTERVALS NOT EXCEEDING 50' IN SDC D AREAS.
- BRACED WALL PANELS OCCURRING ON EXTERIOR WALLS SHALL BE SUPPORTED BY CONTINUOUS FOOTINGS. BRACED WALL LINES OCCURRING ON A BUILDING'S INTERIOR (IN SDC D AREAS) SHALL BE SUPPORTED BY CONTINUOUS FOOTINGS AT INTERVALS NOT EXCEEDING 50' (ORSC R403.1.3, R602.10.7.1 / IRC R403.1.2, R602.10.9.1). ADDITIONAL MEASURES APPLY TO TWO-STORY BUILDINGS (IF THESE MEASURES ARE NOT MET, THEN ALL BRACED WALL LINES SHALL BE SUPPORTED BY CONTINUOUS FOOTINGS):
  - THE HEIGHT OF THE CRIPPLE WALL DOES NOT EXCEED 4'
  - FIRST FLOOR BRACED WALL PANELS ARE SUPPORTED ON DBL FLOOR JOISTS OR CONTINUOUS BLOCKING.
  - THE DISTANCE BETWEEN BRACING LINES DOES NOT EXCEED TWICE THE BUILDING WIDTH MEASURED PARALLEL TO THE BRACED WALL LINE.



9 BRACED WALL BLOCKING: PARALLEL FRAMING

NTS



10 BRACED WALL BLOCKING: PERPENDICULAR FRAMING

NTS