

# 6 Steps To Building The Perfect Staircase

Our goal is to provide our customer with a stair system that is beautiful, functional and practical. Our 2-Length System reduces the complexity in ordering our product, provides maximum flexibility, and most importantly for our stocking customers, saves money through a reduction in the amount of inventory a dealer needs to carry.

For a stocking dealer or stair builder, the money saved through this reduced need for inventory is often used in marketing to grow their business, new product development, and customer service. We also suggest that the savings can be put right into the customer's pocket.

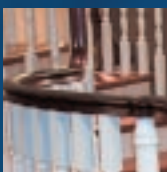
## 1



### Select Your Staircase Style

The first step in building the perfect staircase is choosing the style. There are five distinctive style options available in this catalog – **Gallery, Studio, Colonial, Hampton** and **Contempo**. There is a section on each of these styles with illustrations, photography and a listing of available options.

## 2



### Select Over-The-Post or Post-To-Post Handrail System

There are two styles of handrails available for our staircases. **Over-The-Post** features a continuous handrail that tops the newels and balustrade throughout the stairway. **Post-To-Post** utilizes finial-topped newels that intersect the handrail at intervals. (The Hampton series is only available in post-to-post.)

## 3



### Select a Baluster Style

In order to choose an appropriate baluster, see the section containing your particular style selection.

#### RAKE BALUSTERS

**Style 1** uses our 2-length system. This style is characterized by a classical stair step appearance. This system requires that balusters

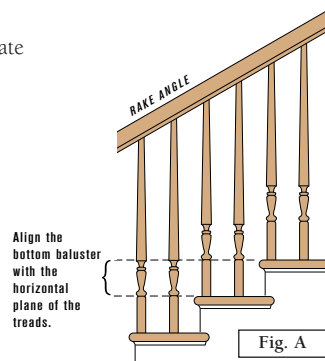


Fig. A

be trimmed at the top, to align with stair rake (Fig. A) and (Fig. B). For 30" to 33" rail heights and two balusters per tread use 36" balusters. If using three balusters per tread\*, use a 36" first and second baluster and a 42" for the third. For 34" to 38" rail heights use a 36" first baluster and a 42" baluster for the second and third (if required).

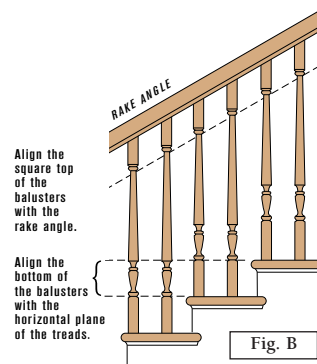


Fig. B

**Style 2** is to cut balusters on the rake. When using this style all balusters are ordered the same length. For 30" to 33" rail height use 36" balusters. For 34" to 38" rail height use 42" balusters. This system requires that the balusters bottom block be trimmed to align baluster turning to the stair rake angle. See (Fig. C) and (Fig. D).

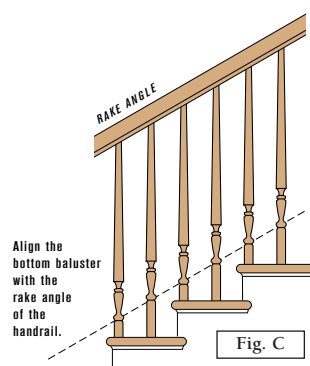


Fig. C

**Special Note – Square Top Balusters Only:** When more than two balusters are required on each tread, balusters must be cut on the rake. See Style 2 (Fig. D)

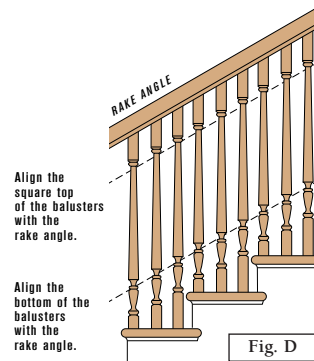


Fig. D

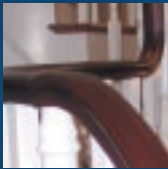
#### BALCONY BALUSTERS

For 36" balcony rail heights use 36" balusters. For 37" to 42" rail height use 42" balusters.

#### STARTING FITTING BALUSTERS

For both 34" to 36" rake heights and for 30" to 33" rake heights use 42" balusters under the turnout or volute. Climbing volutes require 36" balusters for 30" rake heights, 42" balusters for 34" rake heights, and 42" balusters for 36" rake heights.

# 4



## Select a Handrail Style

Select a handrail style that corresponds to the baluster choice. Appropriate handrail options for each series may be found in each of the series style sections and on page 17.



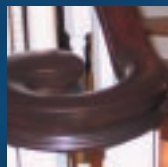
### PROFILED BENDING RAILS

Bending rails and moulds are an affordable and practical way to create a curved balustrade system on the job site. If our installation instructions are followed accurately; profiled bending rails can be glued to a 30" radius on the rake and a 36" radius on the level.

### SHOE RAILS AND FILLETS

Shoe rail is used with balusters on knee wall stairs and on level balconies. Fillet is used to fill the plow between the balusters in shoe rail and plowed handrails.

# 5



## Select a Starting Fitting

If you select an over-the-post system at step 2, you should also select a starting fitting. (See pages 18 and 19 for the complete line of starting fittings).



# 6



## Select a Newel Post Style

Newel posts should correspond to the choice of baluster and handrail. Refer to your particular style section for appropriate options.

### POST-TO-POST NEWELS

#### Starting Newel

(47.5" long with a 5" Top Block)  
Choose this newel for a starting newel or first floor newel when your rake rail height is less than 33". Also use this newel for level run or balcony installations when a 5" top block newel is desired.



#### Stretch Newel (55.5" Long with a 5" Top Block)

Choose this newel when your rake rail height is 34" or higher. This newel may also be used when fittings are used to gooseneck into the second floor newel or balcony newel. Also use this newel at the intermediate landing when a 5" top block newel and a gooseneck fitting is being used and the newel will not be draped over more than one rise. This newel may also be used as a level run or balcony newel when a longer drape is desired.

#### Post-to-Post Landing Newel (16" Top Block)

Choose this newel to connect a rail system at a landing where there is a one-rise difference in rail heights due to the transition. This newel is very useful when fittings will not be used.

### OVER-THE-POST NEWELS

#### Volute / Turnout Newel with a Dowel Bottom

Use this starting newel on a starting step when the installer prefers this method of installation. The shortest turnout newel – 36.5" for Colonial and 43" for other lines – is used for 30" rake rail heights. The longest turnout newel – 41" for Colonial and 47" for other lines – is used for 34" rake rail heights.



#### Utility Newel (43" and 56" long)

Choose this newel as the starting newel or first floor newel in an installation where a starting step is not being used, the rake rail heights if 30", and a starting easing is being used.

This newel may be used on a starting step under a volute or turnout fitting.

This newel will also allow the installer to vary the installation rake rail height easier than a volute newel. Also use this newel on level runs or balconies where the installation is flush mounted or a one-rise drape is desired.

#### Utility Newel (56" long)

Choose this newel for the first floor or starting newel when a starting step is not being used, the rake rail height is 34", and a starting easing is being used. Also may be used when a longer drape is desired on a level run balcony.

### BOX NEWELS

An upgrade option compatible with most series styles, box newels are constructed rather than solid.

