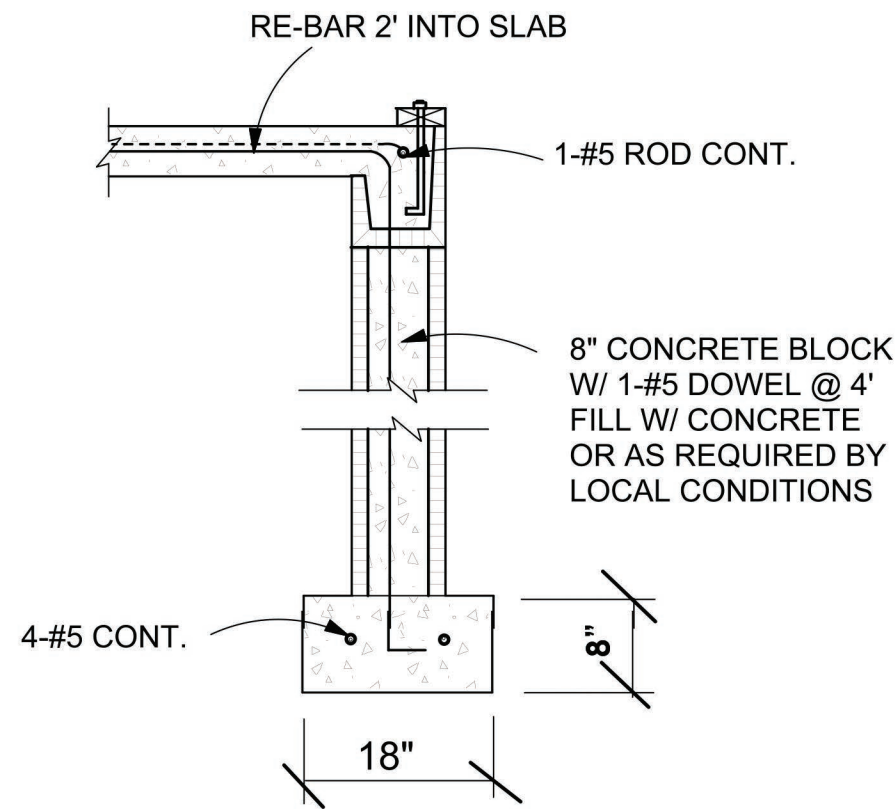
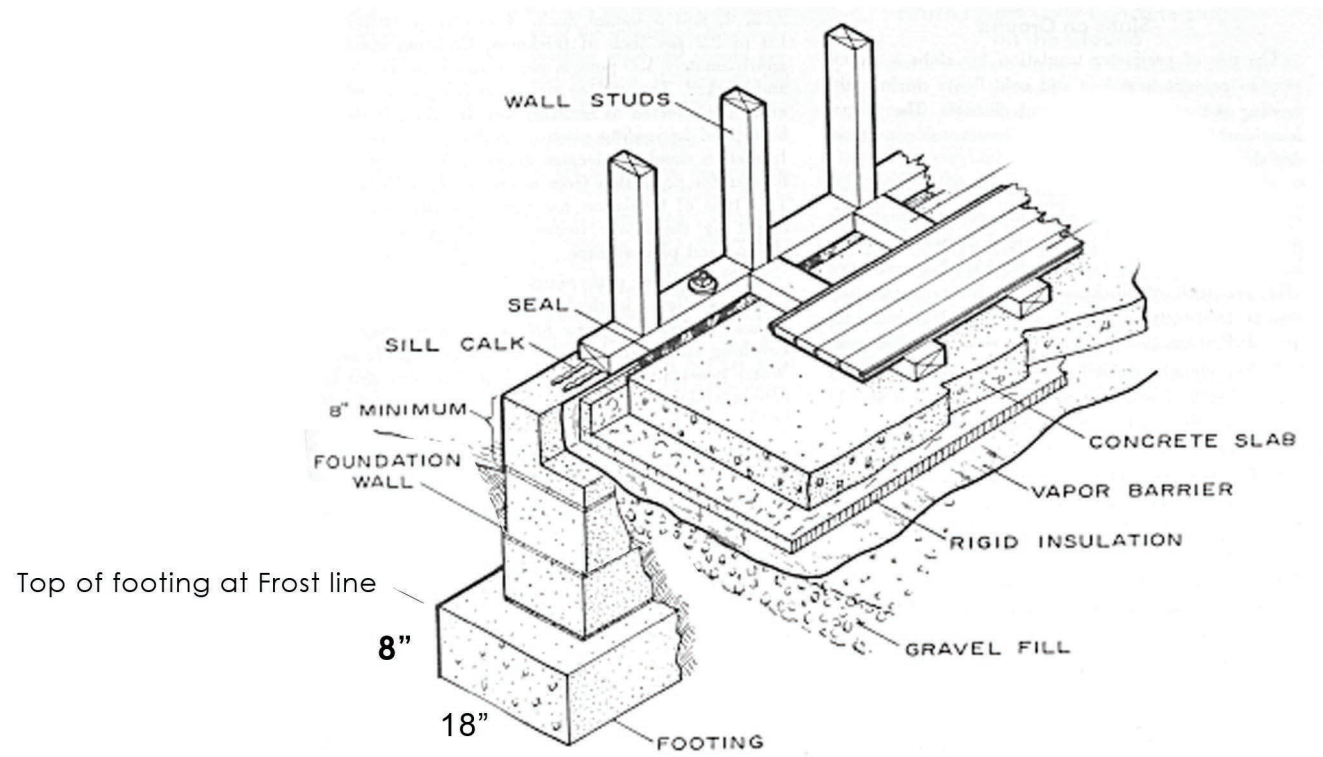


NOTE: SEE ADDITIONAL NOTES ON FRONT ELEVATION SHEET.



DETAIL - B



Rigid insulation to extend 24 " from foundation block and under slab Table N1102.1.1

6-mil polyethylene vapr retarder with joints lapped not less than 6 inches shall be placed between the concrete slab and base course or the prepared subgrade where no base course exists.

## 2 STORY FOUNDATION DETAILS (OPTIONS)

- NOTES:
- \* WALLS ABOVE 4'-0" FROM FINISH GRADE MAY REQUIRE ADDITIONAL STRUCTURAL SIZING, SEE ENGINEER (FOOTING SIZE & RETAINING WALL REQ.)
  - \* FOOTING DETAILS MAY VARY IN REQUIREMENTS, IN YOUR AREA, VERIFY WITH CONTRACTOR OR ENGINEER.
  - \* CONCRETE FLOOR TO BE 8" MINIMUM ABOVE FINISH GRADE.
  - \* PROVIDE COMPACTED SAND FILL AS REQUIRED UNDER FOOTINGS.

W. L. MARTIN HOME DESIGNS DOES NOT WARRANT OR GUARANTEE THE ACCURACY OF THIS SET OF PLANS. BEFORE CONSTRUCTION THE CONTRACTOR, ENGINEER, OR ARCHITECT MUST CHECK DIMENSIONS AND LOADING, AND VERIFY THAT THESE PLANS COMPLY WITH ALL BUILDING CODES IN EFFECT AT CONTRUCTION LOCATION.

REVISIONS	BY
#24104 Springhill	
W.L. Martin Home Designs for Contact Information www.wlmartinhomes.com	
Date	
Scale	
Drawn	
Job	
Sheet	6
Of	8 Sheets