

BAY / BOW

SECTION DIRECTORY

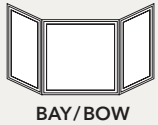


General Information

Product Summary.....	F-BB-2
----------------------	--------

Product Details

Casement Bay Windows	
Size Tables	F-BB-3
Installation Details.....	F-BB-4
Double-Hung and Single-Hung Bay Windows	
Size Tables	F-BB-7
Installation Details.....	F-BB-8
Casement Bow Windows	
Size Tables	F-BB-9
Installation Details.....	F-BB-10



BRAND SUMMARY

Bay / Bow



Bay and Bow for Pella® Impervia® windows are a combination of windows that allow you to have more window and more view, even with limited wall space. Bay windows typically consist of three windows joined together. The center of the window is usually fixed (cannot be opened) with your choice of operating single-hung, double-hung or casement window flankers. Bow windows consist of four or more casement windows joined together to form a graceful curve. Choose windows with a fixed sash, or any combination of vented (can be opened) windows. Choose from a variety of options, including headboards and insulated seat boards in oak or maple wood. Bay and Bow wood frames come in your choice of primed, prefinished White, Bright White, Linen White, Stain or unfinished.



BAY WINDOWS

Bay windows are available in standard 30 and 45 degree angles, and custom angles between 15 and 45 degrees. They can accommodate various roof systems, including soffits and gable roofs. The bay frame is fully assembled. The Pella Impervia casement, double-hung and single-hung units are shipped separately and installed on site.



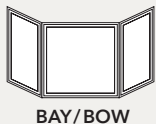
Refer to Pella Impervia casement, double-hung and single-hung sections for window features.

BOW WINDOWS

Bow windows are available in standard 15 degree angles, and can have four or five units. Custom angles are also available, between 5 to 30 degree. They can accommodate various roof systems, including soffits and gable roofs. The bow frame is fully assembled. The Pella Impervia units are shipped separately and installed on site.



Refer to the Pella Impervia casement section for window features.

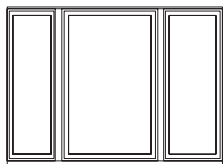


CASEMENT BAY

Size Tables



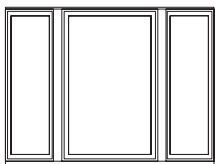
30° BAY



30 DEGREE BAY - 40" CENTER UNIT

Flanker Frame Width Inches (mm)	A R.O. Width Inches (mm)	B M.O. Width Inches (mm)	C Overall Projection Inches (mm)	D Overall Unit Width Inches (mm)
18" (457)	80-3/4" (2051)	80-3/4" (2051)	10-1/2" (267)	80" (2032)
20-1/4" (514)	84-3/4" (2153)	84-3/4" (2153)	11-11/16" (297)	84" (2134)
23-3/4" (603)	90-3/4" (2305)	90-3/4" (2305)	13-3/8" (340)	90" (2286)
27-1/4" (692)	96-3/4" (2457)	96-3/4" (2457)	15-1/8" (384)	96" (2438)
30-3/4" (781)	102-3/4" (2610)	102-3/4" (2610)	16-7/8" (429)	102" (2591)
34-1/4" (870)	108-3/4" (2762)	108-3/4" (2762)	18-9/16" (471)	108" (2743)

45° BAY

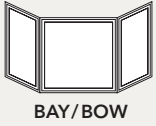


45 DEGREE BAY - 40" CENTER UNIT

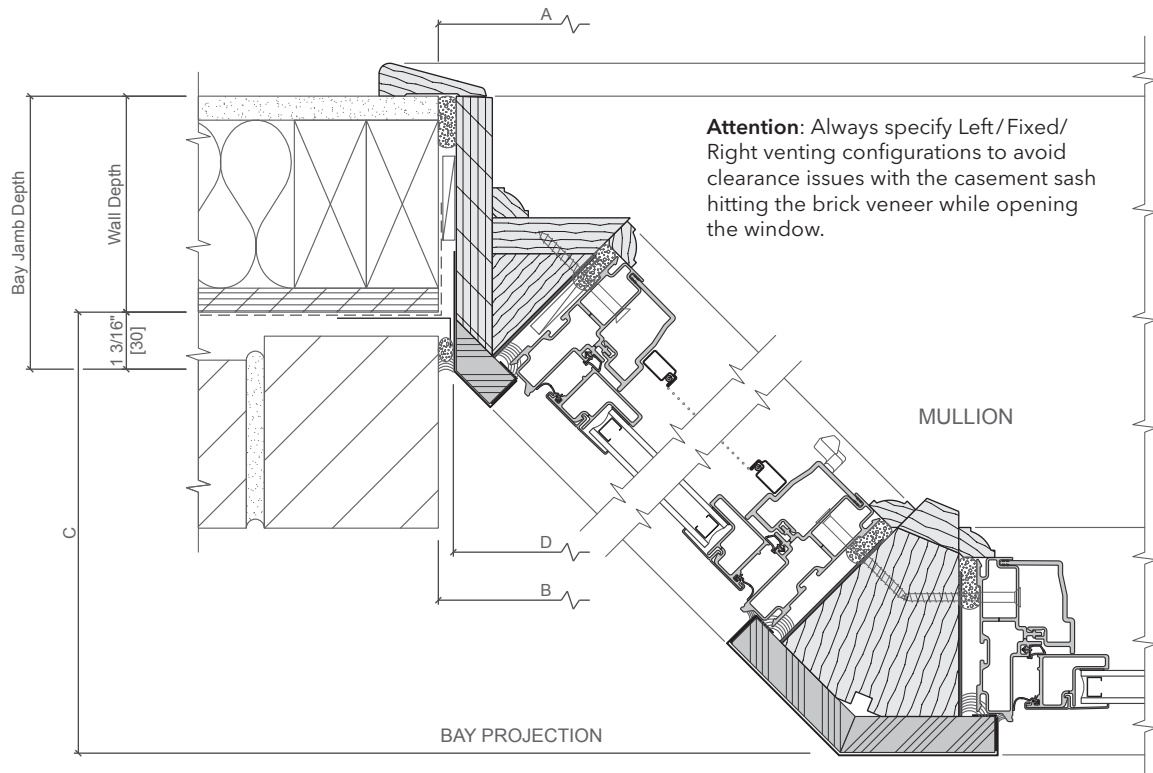
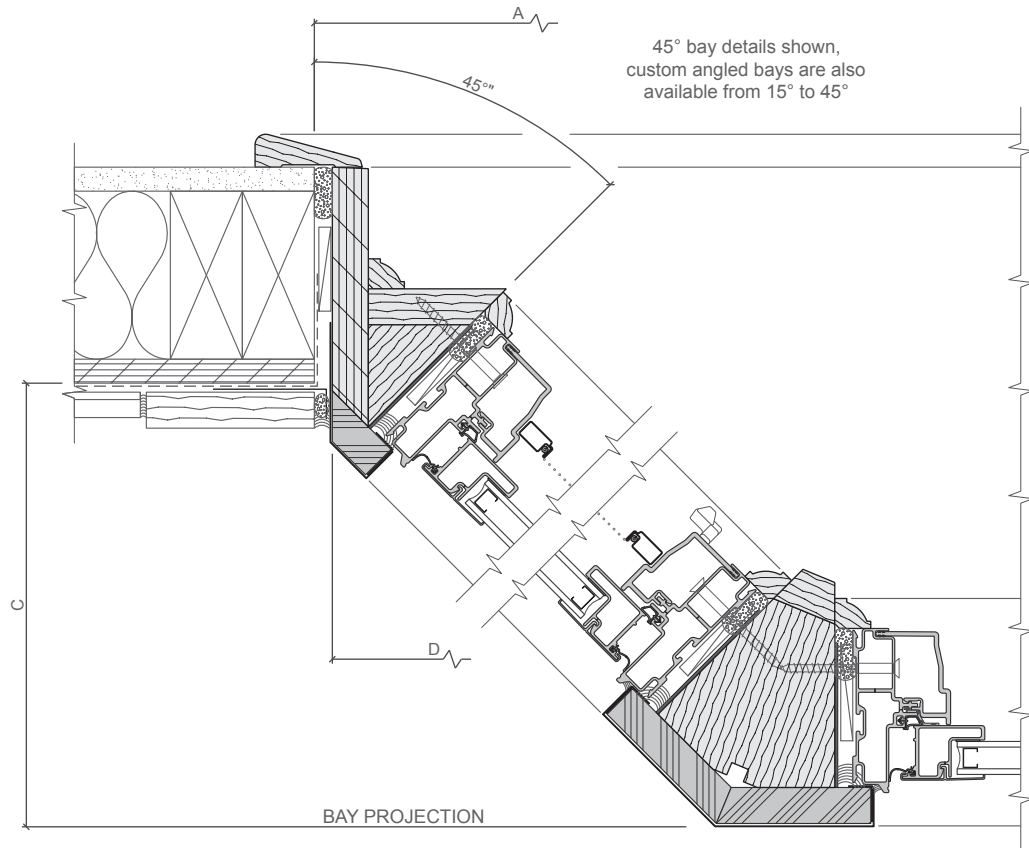
Flanker Frame Width Inches (mm)	A R.O. Width Inches (mm)	B M.O. Width Inches (mm)	C Overall Projection Inches (mm)	D Overall Unit Width Inches (mm)
21-1/2" (546)	80-3/4" (2051)	80-3/4" (2051)	17-3/4" (451)	80" (2032)
24-1/4" (616)	84-3/4" (2153)	84-3/4" (2153)	19-3/4" (502)	84" (2134)
28-1/2" (724)	90-3/4" (2305)	90-3/4" (2305)	22-3/4" (578)	90" (2286)
32-3/4" (832)	96-3/4" (2457)	96-3/4" (2457)	25-3/4" (654)	96" (2438)
37" (940)	102-3/4" (2610)	102-3/4" (2610)	28-3/4" (730)	102" (2591)
39-3/4" (1010)	106-3/4" (2711)	106-3/4" (2711)	30-3/4" (781)	106" (2692)

Note: Other combinations are available between 15 and 45 degrees. Contact your local Sales Representative for more detailed information.

- Bay window combinations are not AAMA/WDMA performance rated.
- For center unit frame width other than those shown:
Greater than 40" - add difference between 40" and greater frame width to dimensions A, B and D.
Less than 40" - subtract difference between 40" and smaller frame width from dimensions A, B and D.
- Dimensioning points are shown in details.
- Overall projection (C dimension) is sheathing to face of bay.
- Specify overall frame height of bay unit.

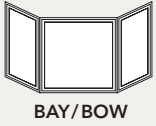


CASEMENT BAY Installation Details



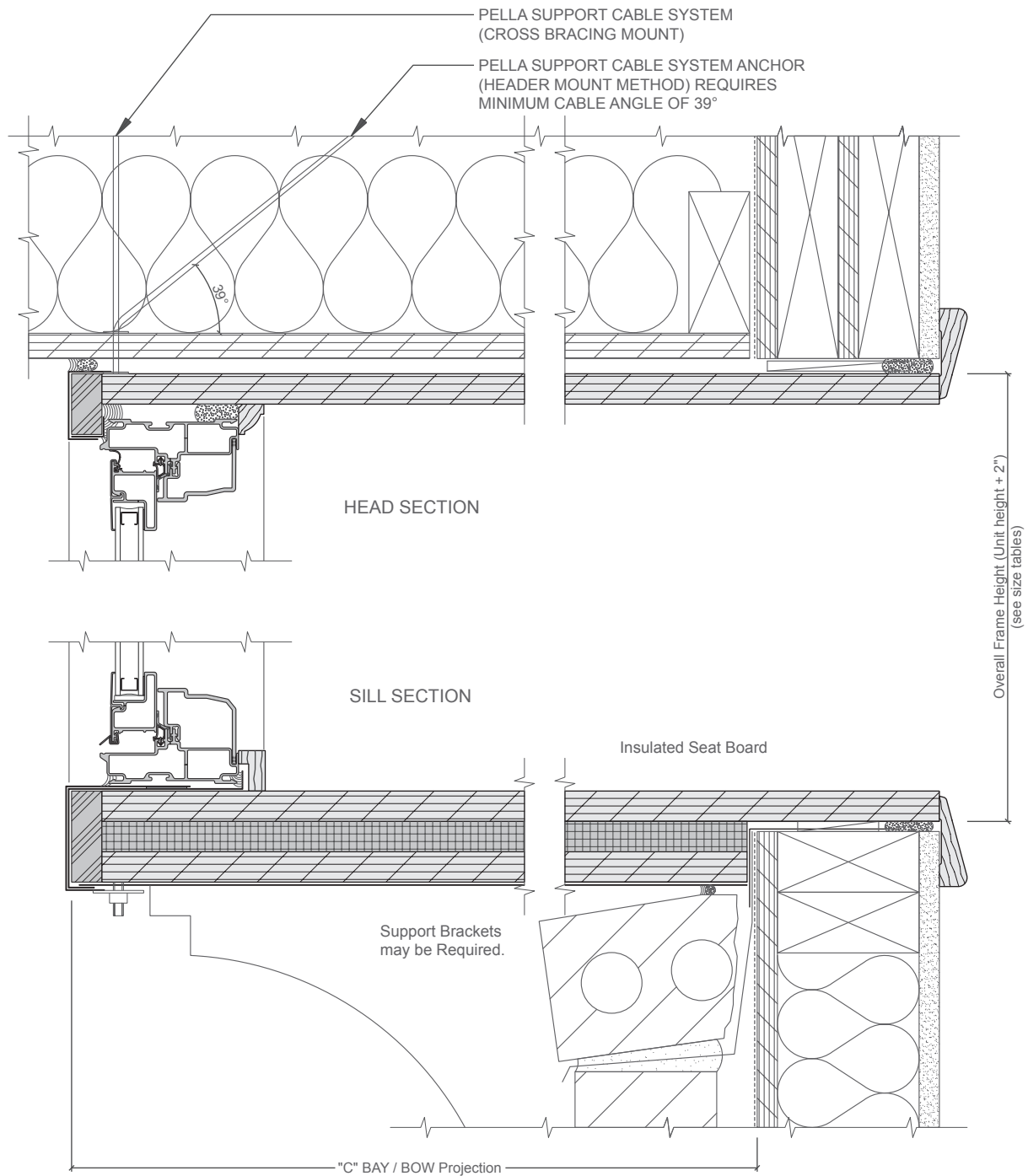
Scale 3" = 1' 0"

Maximum Jamb Depth = 10-3/8".



CASEMENT BAY

Installation Details



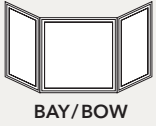
(1) The Bay/Bow support cables must be attached to structural members capable of supporting 1,300 lbs. Knee braces are required in addition to the support cables if the structural members are not capable of supporting 1,300 lbs. Bay/Bow units are not designed to support roof structure.

Scale 3" = 1' 0"

The Bay/Bow support cables must be attached to structural members capable of supporting 1,300 lbs.

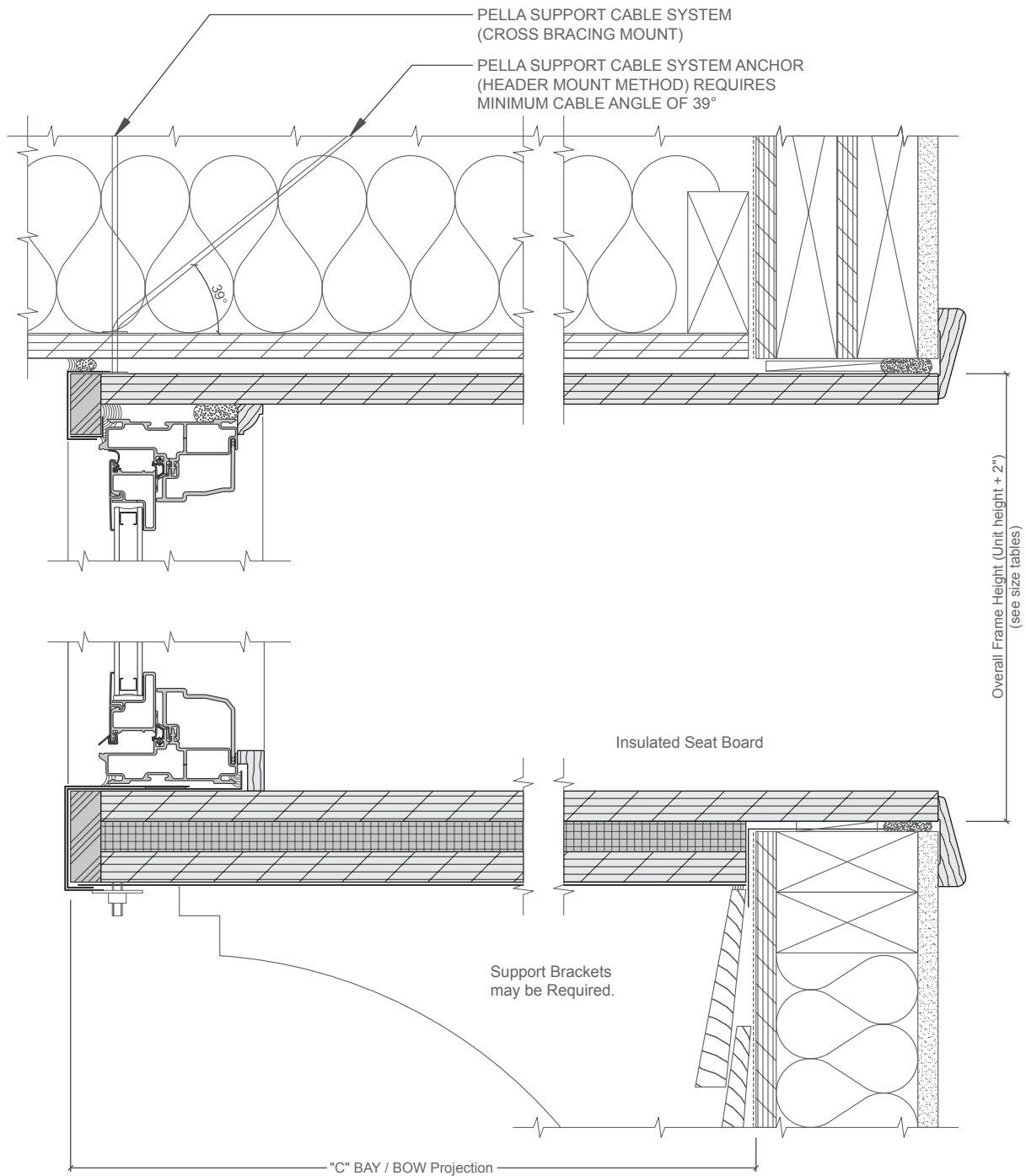
Knee braces are required in addition to the support cables if the structural members are not capable of supporting 1,300 lbs. Bay/Bow units are not designed to support roof structure.

Interior Head/Jamb/Sill stops are included with the bay.



CASEMENT BAY

Installation Details

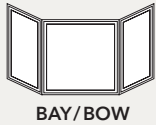


Scale 3" = 1' 0"

The Bay/Bow support cables must be attached to structural members capable of supporting 1,300 lbs.

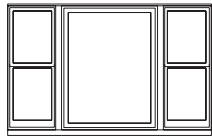
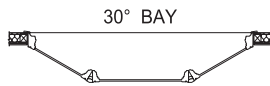
Knee braces are required in addition to the support cables if the structural members are not capable of supporting 1,300 lbs. Bay/Bow units are not designed to support roof structure.

Interior Head/Jamb/Sill stops are included with the bay.



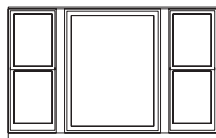
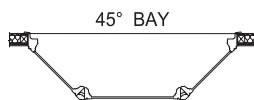
DOUBLE-HUNG OR SINGLE-HUNG BAY

Size Tables



30 DEGREE BAY - 40" CENTER UNIT

Flanker Frame Width Inches (mm)	A R.O. Width Inches (mm)	B M.O. Width Inches (mm)	C Overall Projection Inches (mm)	D Overall Unit Width Inches (mm)
18" (457)	80-3/4" (2051)	80-3/4" (2051)	10-1/2" (267)	80" (2032)
20-1/4" (514)	84-3/4" (2153)	84-3/4" (2153)	11-11/16" (297)	84" (2134)
23-3/4" (603)	90-3/4" (2305)	90-3/4" (2305)	13-3/8" (340)	90" (2286)
27-1/4" (692)	96-3/4" (2457)	96-3/4" (2457)	15-1/8" (384)	96" (2438)
30-3/4" (781)	102-3/4" (2610)	102-3/4" (2610)	16-7/8" (429)	102" (2591)
34-1/4" (870)	108-3/4" (2762)	108-3/4" (2762)	18-9/16" (471)	108" (2743)



45 DEGREE BAY - 40" CENTER UNIT

Flanker Frame Width Inches (mm)	A R.O. Width Inches (mm)	B M.O. Width Inches (mm)	C Overall Projection Inches (mm)	D Overall Unit Width Inches (mm)
21-1/2" (546)	80-3/4" (2051)	80-3/4" (2051)	17-3/4" (451)	80" (2032)
24-1/4" (616)	84-3/4" (2153)	84-3/4" (2153)	19-3/4" (502)	84" (2134)
28-1/2" (724)	90-3/4" (2305)	90-3/4" (2305)	22-3/4" (578)	90" (2286)
32-3/4" (832)	96-3/4" (2457)	96-3/4" (2457)	25-3/4" (654)	96" (2438)
37" (940)	102-3/4" (2610)	102-3/4" (2610)	28-3/4" (730)	102" (2591)
39-3/4" (1010)	106-3/4" (2711)	106-3/4" (2711)	30-3/4" (781)	106" (2692)

Note: Other combinations are available between 15 and 45 degrees. Contact your local Sales Representative for more detailed information.

- Bay window combinations are not AAMA/WDMA performance rated.

- For center unit frame width other than those shown:

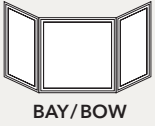
Greater than 40" - add difference between 40" and greater frame width to dimensions A, B and D.

Less than 40" - subtract difference between 40" and smaller frame width from dimensions A, B and D.

- Dimensioning points are shown in details.

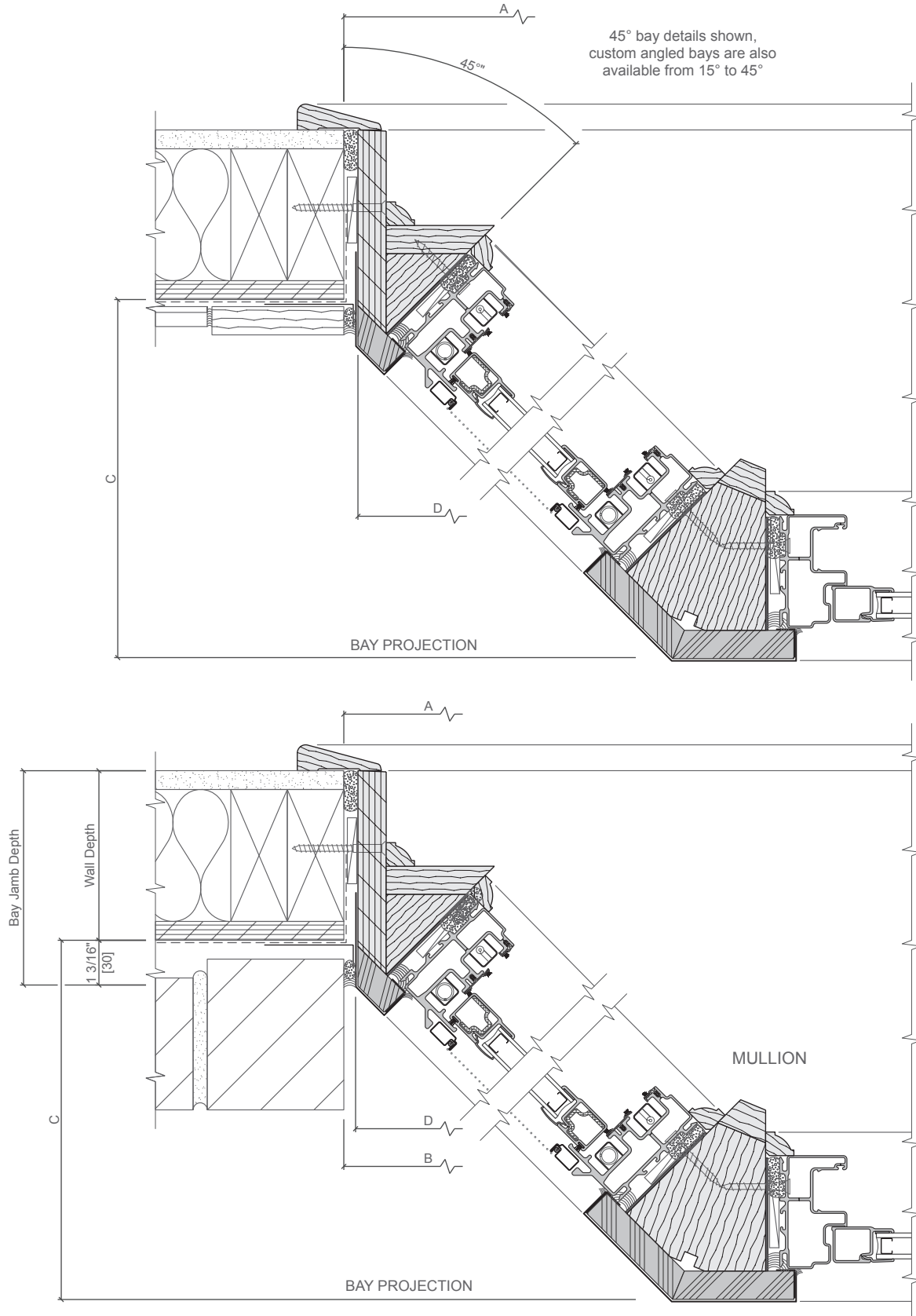
- Overall projection (C dimension) is sheathing to face of bay.

- Specify overall frame height of bay unit.



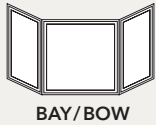
DOUBLE-HUNG OR SINGLE-HUNG BAY

Installation Details



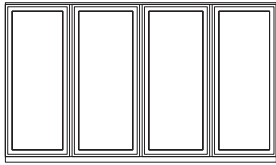
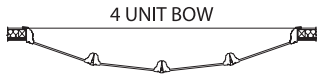
Scale 3" = 1' 0"

Maximum Jamb Depth = 10-3/8".



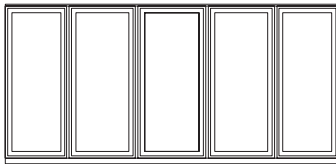
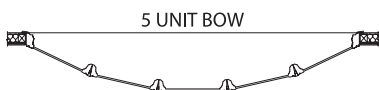
CASEMENT BOW

Size Tables



4-UNIT BOW

Flanker Frame Width Inches (mm)	A R.O. Width Inches (mm)	B M.O. Width Inches (mm)	C Overall Projection Inches (mm)	D Overall Unit Width Inches (mm)
21" (533)	92-3/4" (2356)	92-3/4" (2356)	12-1/4" (311)	92" (2337)
23" (584)	100-3/4" (2559)	100-3/4" (2559)	13-5/16" (338)	100" (2540)
25" (635)	108-3/4" (2762)	108-3/4" (2762)	14-3/8" (365)	108" (2743)
29" (737)	123-3/4" (3143)	123-3/4" (3143)	16-7/16" (418)	123" (3124)
34-1/2" (876)	144-3/4" (3677)	144-3/4" (3677)	19-1/4" (489)	144" (3658)

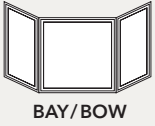


5-UNIT BOW

Flanker Frame Width Inches (mm)	A R.O. Width Inches (mm)	B M.O. Width Inches (mm)	C Overall Projection Inches (mm)	D Overall Unit Width Inches (mm)
19" (483)	104-3/4" (2661)	104-3/4" (2661)	16-13/16" (411)	104" (2642)
21" (533)	113-3/4" (2889)	113-3/4" (2889)	18-5/16" (465)	113" (2870)
23" (584)	122-3/4" (3118)	122-3/4" (3118)	19-3/4" (502)	122" (3099)
25" (635)	132-3/4" (3372)	132-3/4" (3372)	21-3/8" (543)	132" (3353)
27-3/4" (705)	144-3/4" (3677)	144-3/4" (3677)	30-3/4" (781)	144" (3658)

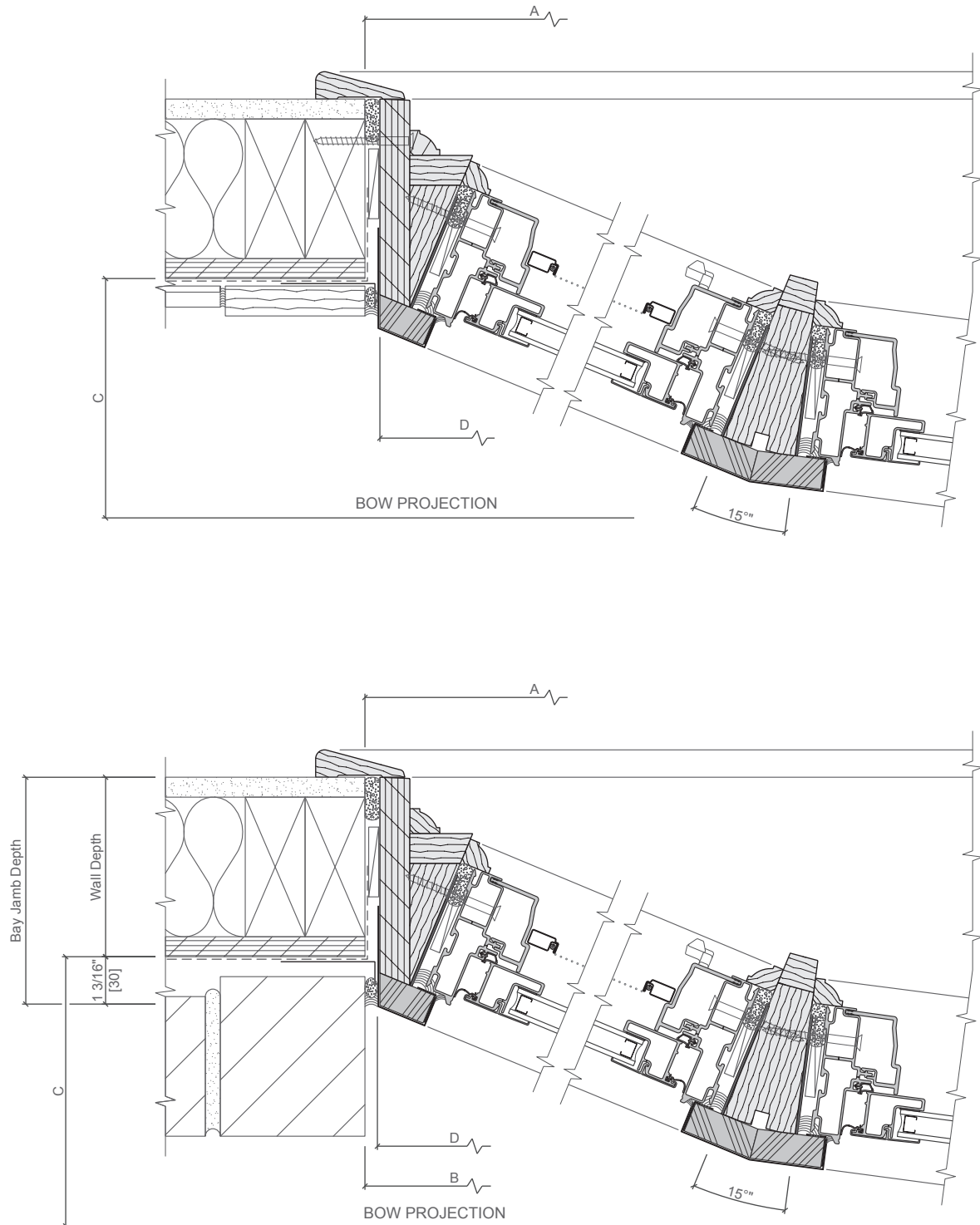
Note: Other combinations are available between 5 and 22 degrees. Contact your local Sales Representative for more detailed information.

- Bow window combinations are not AAMA/WDMA performance rated.
- Dimensioning points are shown on details.
- Overall projection (C dimension) is sheathing to face of bow.
- Specify overall frame height of bow unit.



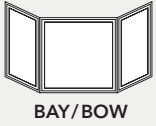
CASEMENT BOW

Installation Details

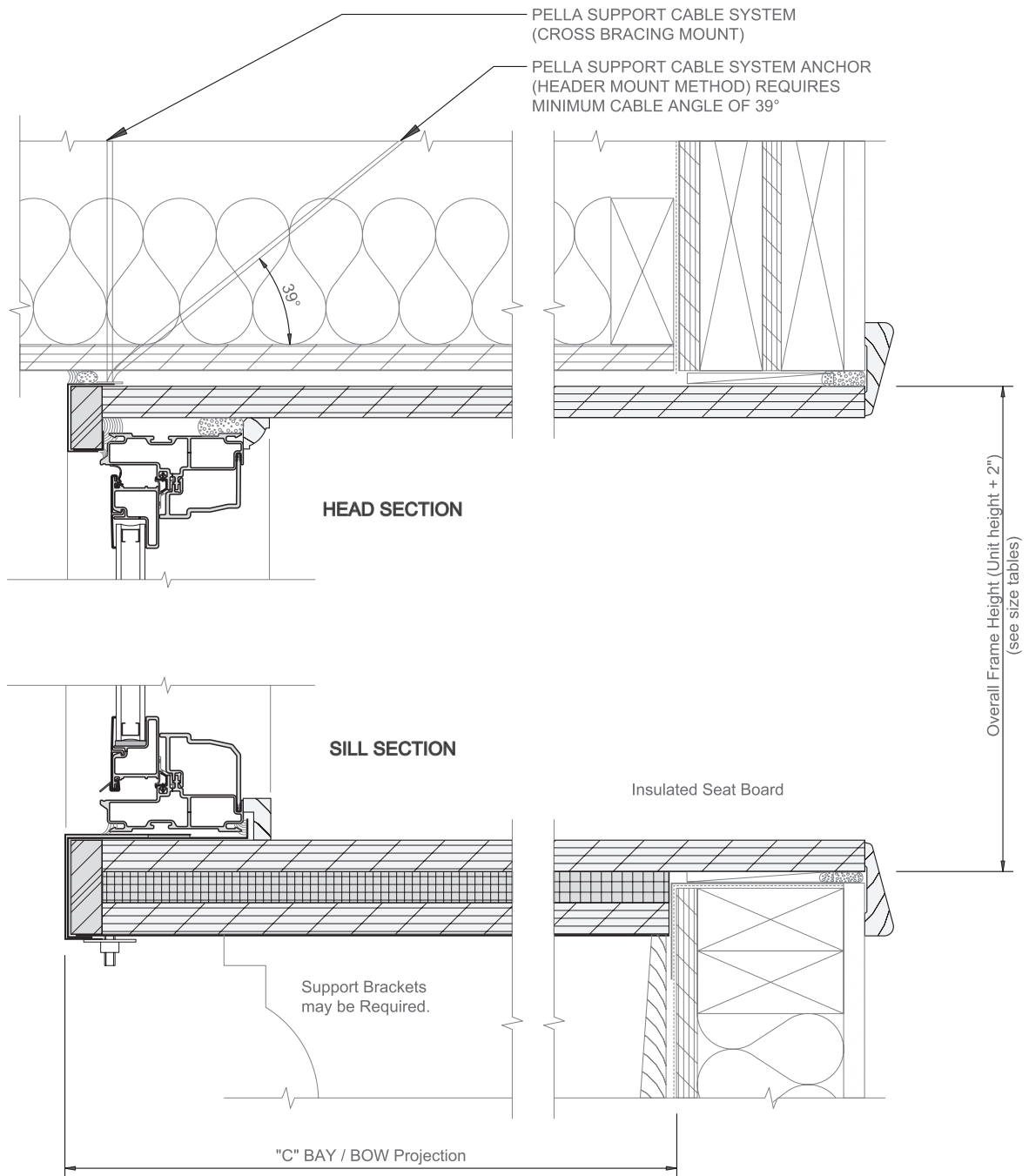


Scale 3" = 1' 0"

Maximum Jamb Depth = 10-3/8".



CASEMENT BOW Installation Details



Scale 3" = 1' 0"

The Bay/Bow support cables must be attached to structural members capable of supporting 1,300 lbs.

Knee braces are required in addition to the support cables if the structural members are not capable of supporting 1,300 lbs. Bay/Bow units are not designed to support roof structure.

Interior Head/Jamb/Sill stops are included with the bay.