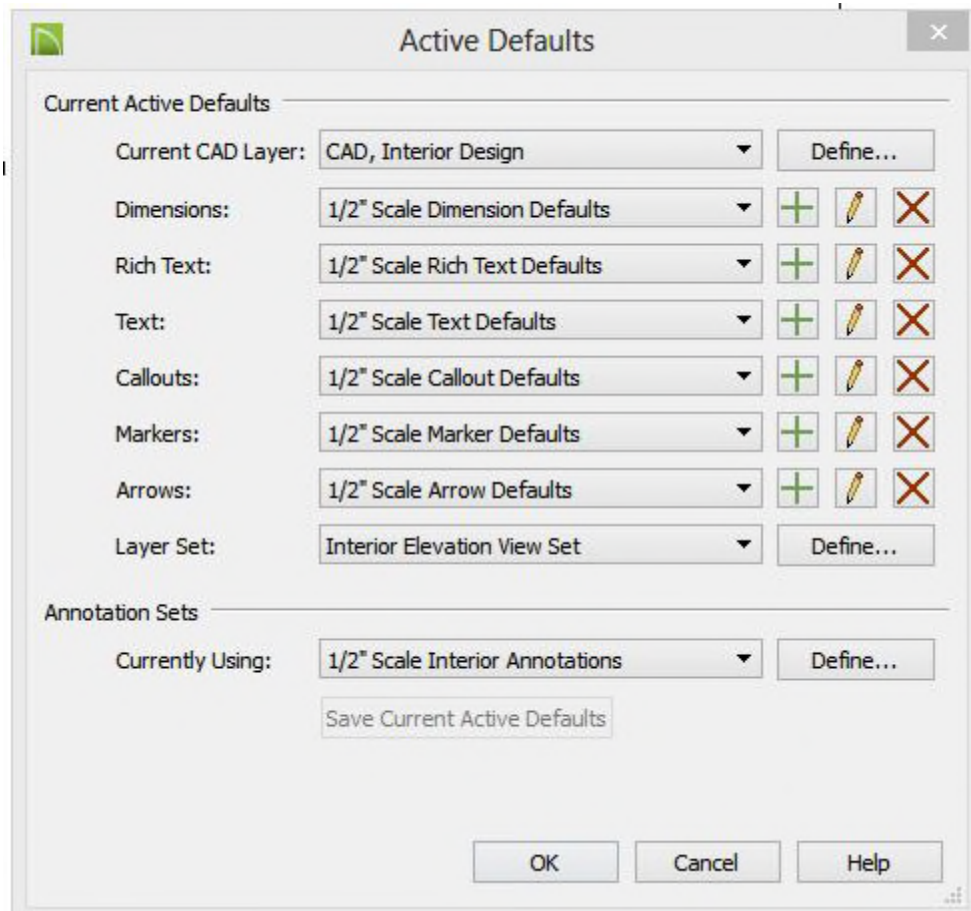


# Annosets Defaults & Layersets

Understanding the relationships of the above and how they can, when properly set up together can make the use of Chief Architect much easier. These three tools basically define the graphic standards that will be used in your project.

Annosets simply contain a specification for a set of Defaults which will be set when that Annoset is initialized:



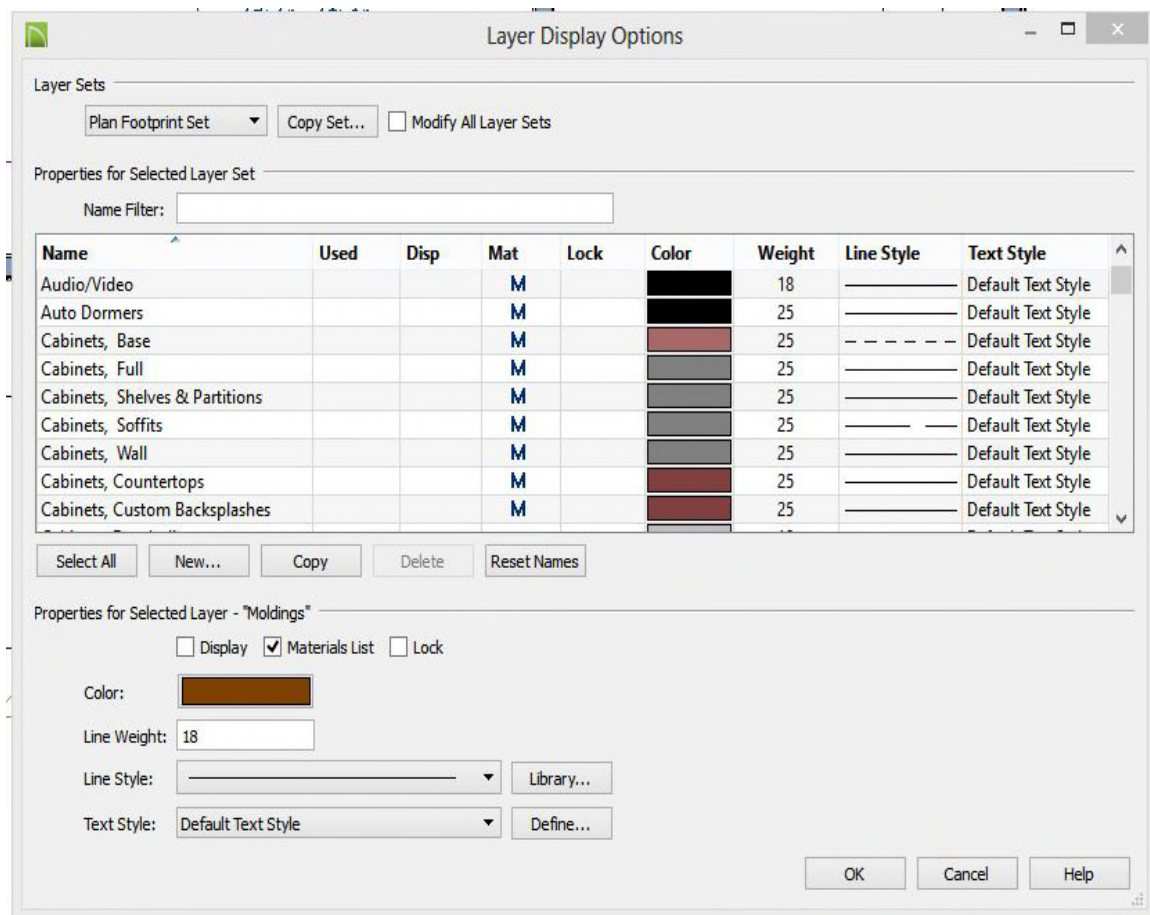
These are the Master Settings for any Annoset. When the Annoset is selected these Defaults will all be in effect. The Current CAD Layer and the Layerset typically relate to the type of drawing being developed:

- Site Plan
- Architectural Floor Plans
- Structural Floor Plans
- Elevations and Sections
- etc.....

The rest of the Defaults are used to control the appearance of the various objects according to the scale at which the drawing is to be printed. In the case of the Dimension Defaults there are also settings that specify what objects will be used in creating the dimension string.

Generally, it would only be necessary to have one Annoset per scale so that Dimensions, Text, Callouts, Markers & Arrows were consistent in appearance. However, since the Current CAD Layer and the Layerset are not related to scale it is usually desirable to have additional Annosets devoted to those. Obviously, if a Structural Floor Plan is being developed you want a different Layerset and a different CAD Layer to be in effect.

**Layersets are used to control what is displayed along with several settings that can over-ride the Defaults based on each individual Layer. This provides the ability to suppress or enhance the display (and printed appearance) based on the use of the drawing to be printed.**



The use and setup of a Layerset is for the most part obvious and the user documentation covers it pretty well. There are a couple of nuances that might not be obvious however in that they allow the Plan Defaults to be modified for any Layer. The the Display settings for Color, Line Weight, Line Style & Text Style are in most cases set up in the Plan Defaults but using the Layerset dialog allows these to be changed to meet the needs of the particular drawing to be printed.

Generally, Color is used mostly for clarity of the display on the screen and Line Weight is used for clarity of the printed output. Line Style OTOH is appropriate for both uses.

Text Style is probably one of the least understood features of this dialog. Most Text created would be per the "Plan Default" but in some cases you might want it to be a different size, font, color, etc for a particular drawing type. This setting allows those to be controlled on a Layerset basis rather than at the Object basis. As an example, if you normally want the text to conform to the Default then in the Layerset it would be set to that Default. But if you wanted it to be different on one drawing then in the Layerset for that drawing you could select a different Text Style for that Layer.

**In summary, Annosets select the Current CAD Layer, the Defaults and the Active Layerset. The Defaults specify the Appearance according to Scale, etc. The Layerset allows for Display modifications for different Drawings - Generally related to building Discipline such as Structural, Electrical, etc.**

**When properly set up and used, the need to edit individual objects display settings can be drastically minimized.**

**Depending on the type of work you do, careful analysis and definition of the Annosets and Layersets that you need (or don't need) can be a big time saver. I seldom select a Layerset individually. I select instead the Annoset which automatically selects everything else.**