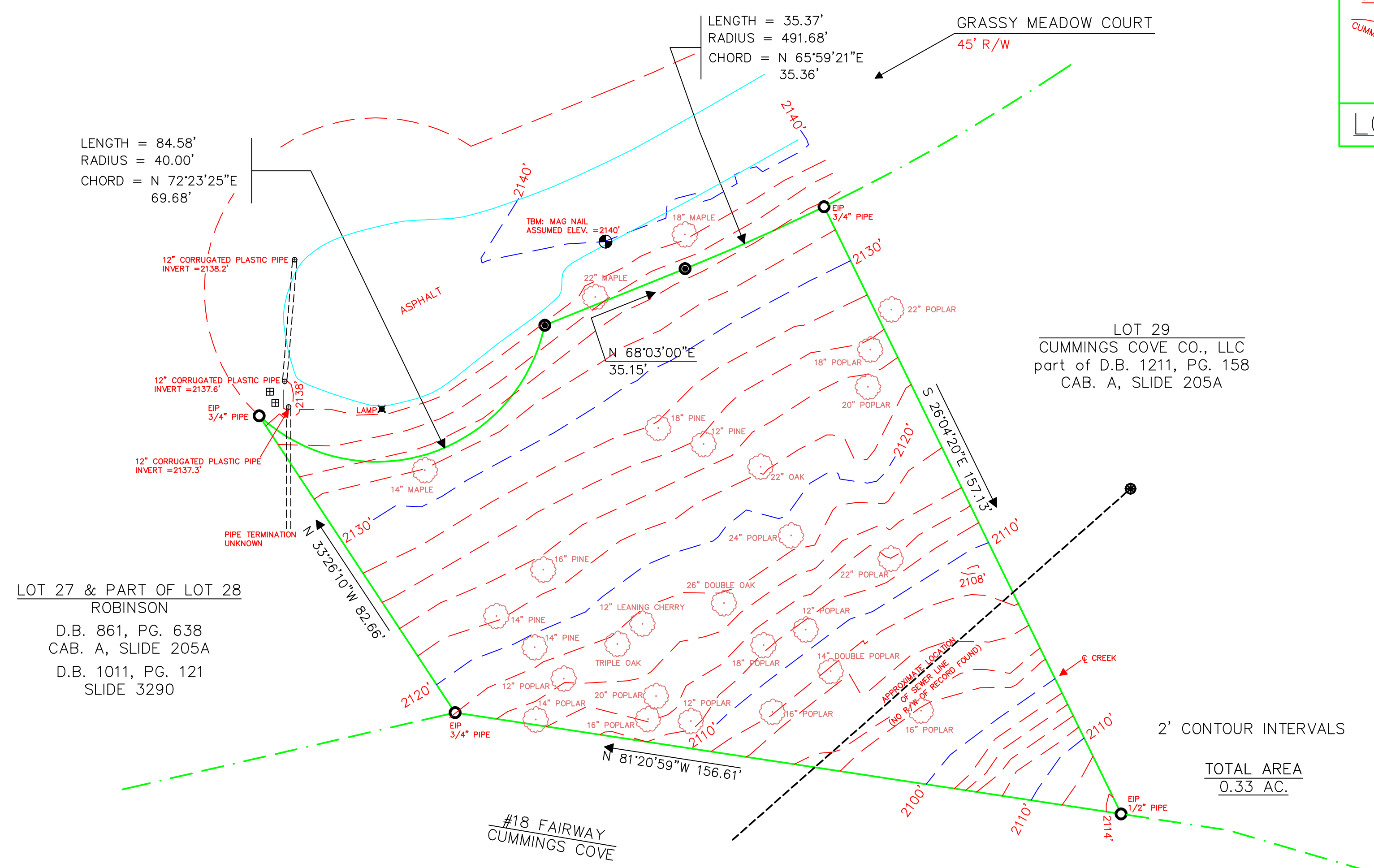


LOCATION MAP  
NOT TO SCALE

PLAT NORTH (CAB. A, SLIDE 205A)



LOT 27 & PART OF LOT 28  
ROBINSON  
D.B. 861, PG. 638  
CAB. A, SLIDE 205A  
D.B. 1011, PG. 121  
SLIDE 3290

LOT 29  
CUMMINGS COVE CO., LLC  
part of D.B. 1211, PG. 158  
CAB. A, SLIDE 205A

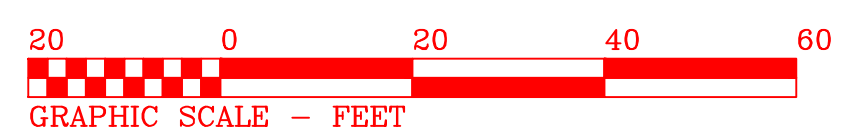
2' CONTOUR INTERVALS

TOTAL AREA  
0.33 AC.

DEED REF:  
D.B. 1232, PG. 450

PLAT REF:  
CAB. A, SLIDE 205A  
SLIDE 3290

TAX MAP #9538.02-75-0787



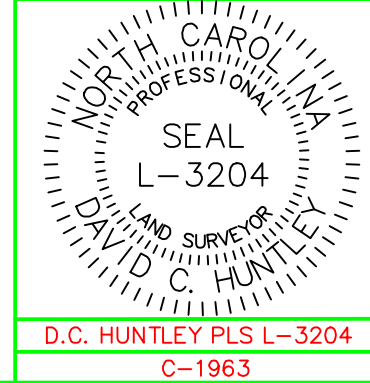
- LEGEND**
- EIP EXISTING IRON PIN
  - NIP NEW IRON PIN
  - PT UNMARKED POINT
  - CONC. MON. CONCRETE MONUMENT
  - PP POWER POLE
  - LP LIGHT POLE
  - CL CENTER LINE
  - R/W RIGHT OF WAY
  - CONC. CONCRETE
  - REF. REFERENCE
  - OHU OVERHEAD UTILITIES
  - SS SANITARY SEWER MANHOLE
  - UB UTILITY BOX

I, David C. Huntley, certify that this plat was drawn under my supervision from an actual survey made under my supervision (Deed description recorded in Bk. 1232, Pg. 450); that the boundaries not surveyed are clearly indicated as drawn from information found in Bk. N/A, Pg. N/A; that the ratio of precision as calculated is 1:10,000; that this plat meets the requirements of The Standards of Practice for Land Surveying in North Carolina. This 24th day of January, 2017.

*David C. Huntley*  
David C. Huntley

PLS L-3204

NOT FOR RECORDATION



STATE OF NORTH CAROLINA  
HENDERSON COUNTY  
HENDERSONVILLE TOWNSHIP

part of LOT 28, THE MEADOWS  
@ CUMMINGS COVE  
SURVEY FOR  
PATRICK BARDER

DAVID C. HUNTLEY  
& ASSOCIATES, INC.  
675 MAPLE STREET  
HENDERSONVILLE, NC 28792  
(828) 693-8077

SURVEY DCH  
DRAWN KMC  
SCALE 1" = 20 FT.  
DATE: 01/18/17  
DWG. NO. 6928(28)