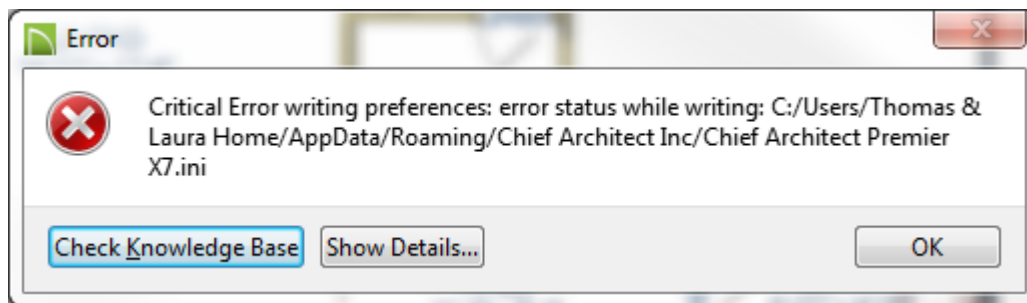


I was working this afternoon on a plan. I had the plan and the layout open. There was a thunderstorm that passed over, and the power to the building shut off for 1 second. This caused my computer to turn off immediately. After the power came on, and my computer started up, I tried to open the file that I was working on.

The File would not open, and I received a message that the file was corrupt. I did not get a screen shot of the error message.

I recovered a previously saved file from earlier in the day. That one will open in Chief. But When I open the file, and also when I save a .plan file or .layout file, I receive the following error:



How can I get rid of this error message?