

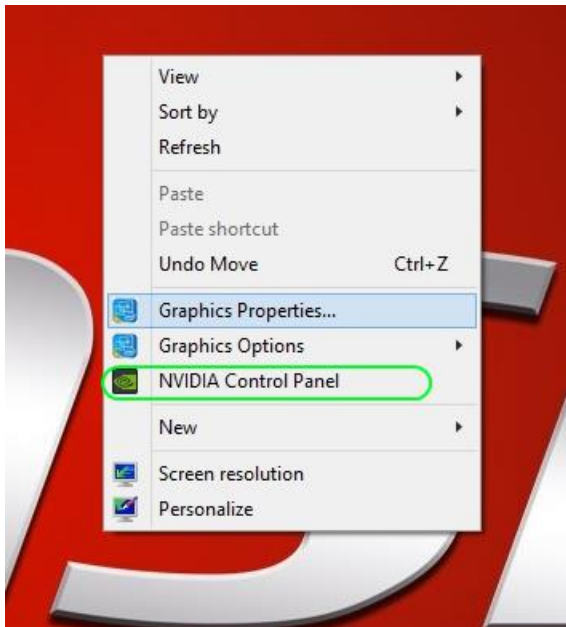
HOW TO SETUP MATRIX DISPLAY

*On MSI GS60/GS70/GE60/GE70 Notebooks**

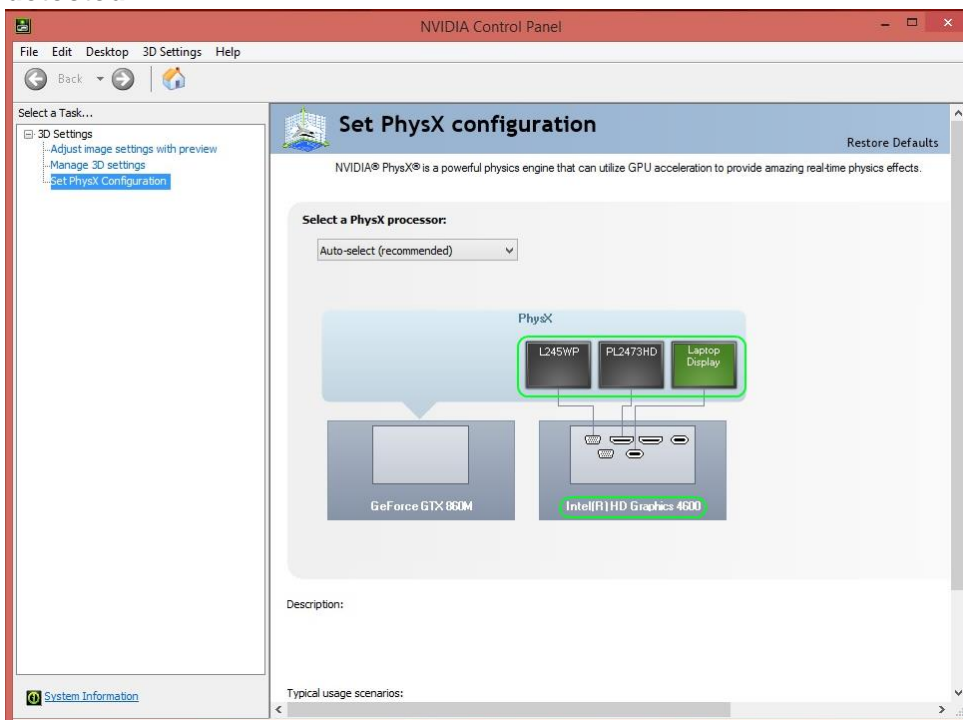
1. Start by updating your Intel IGP and Nvidia GPU drivers from:

- <http://www.geforce.com/drivers>
- <https://downloadcenter.intel.com/default.aspx>

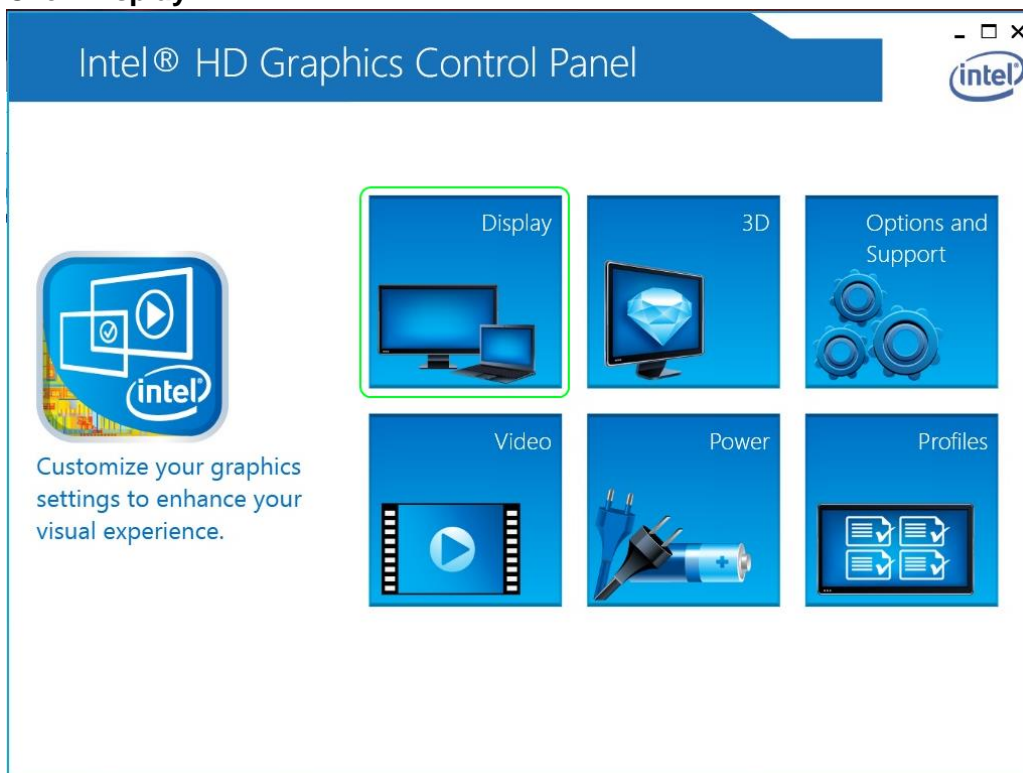
2. Go to the Nvidia Control Panel:



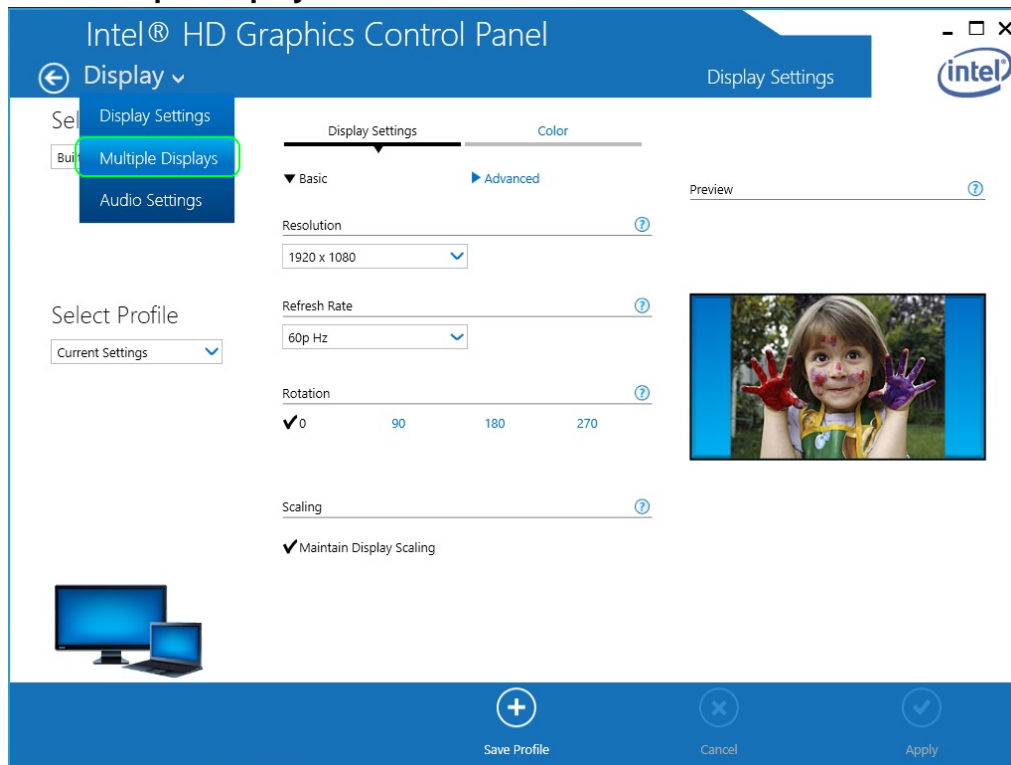
3. Go to Set Physx Configuration and check if all connected displays are detected:



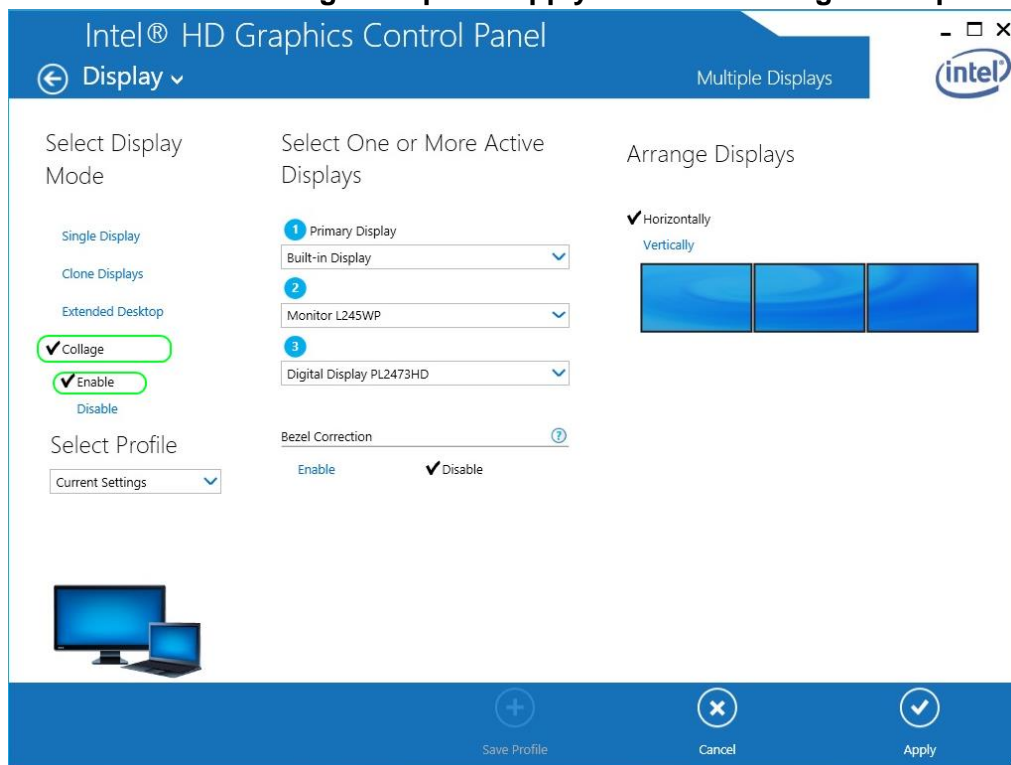
Please Note that the displays are connected to the Intel Integrated Graphics, so you'll need to use the Intel Graphics Control Panel to make Display adjustments.

4. Go to Intel Graphics Control Panel**5. Click Display**

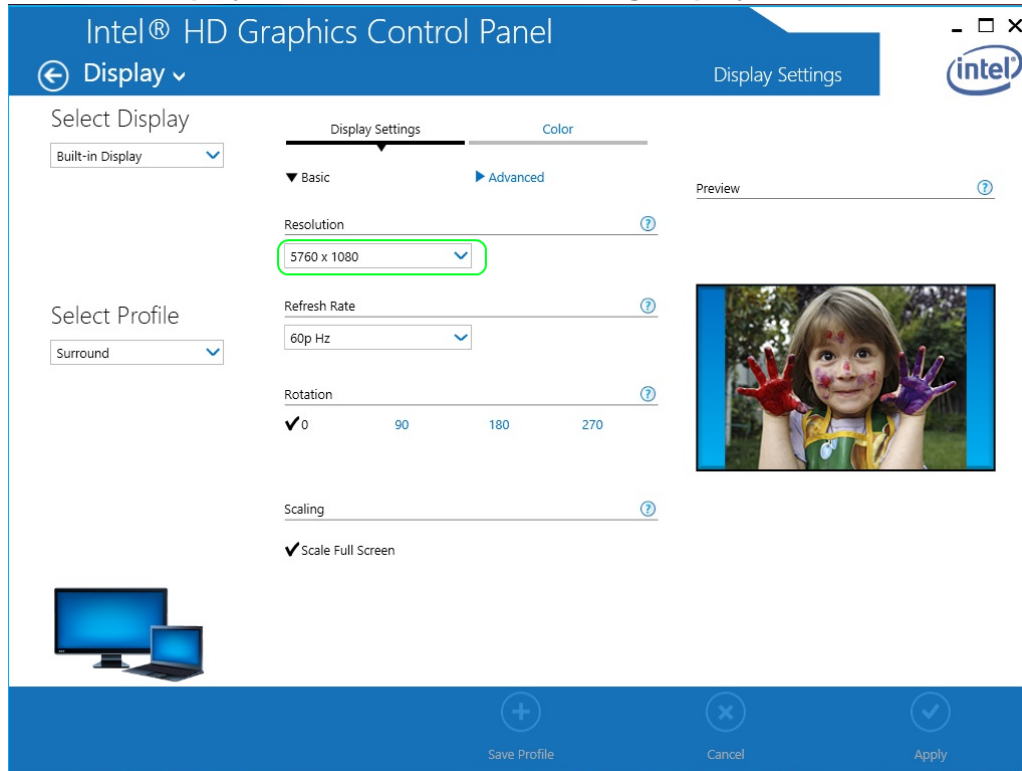
6. Click Multiple Displays



7. Click and enable Collage and press Apply to create one big desktop



You can also Enable Bezel Correction if needed.

8. The three displays are now treated as one big display in Windows and Games

* This guide applies to the following MSI Notebooks running on Win8.x:

GS60 2PL/2PC/2PE

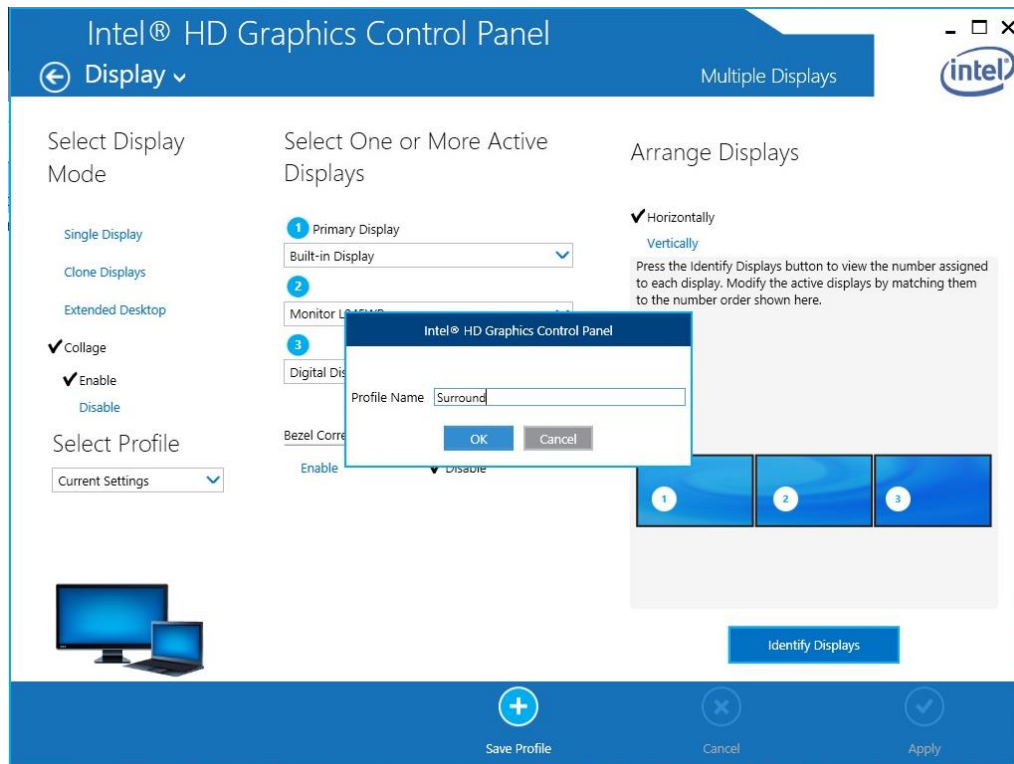
GS70 2OD/2PC/2PE

GE60 2OC/2OD/2OE/2PC/2PE

GE70 2OC/2OD/2OE/2PC/2PE

Extra Tip:

For extra convenience save your Matrix Display Setup in a Profile:



You can easily select this profile from the desktop when needed:

